



Update _2_0_418

Clinical Reminders

**VA-CAREGIVER SUPPORT PROGRAM (CSP) DIALOG
UPDATES**

Install Guide

April 2024

Product Development
Office of Information Technology
Department of Veterans Affairs

Table of Contents

INTRODUCTION 1

PRE-INSTALLATION STEPS 17

INSTALL DETAILS 17

INSTALL EXAMPLE 18

POST INSTALLATION 26

Introduction

In support of the MISSION Act, the Caregiver Support Program (CSP) has updated the CSP Approval, Denial and Discharge or Revocation Notes, CSP PCAFC Veterans Functional Assessment Instrument and CSP PGCSS Veteran Intake dialog templates with options based on new regulations, removed redundancies, and added missing elements. These updates are related to the MISSION Act Final Rule and Caregiver Support Program expansion.

The CSP and Geriatric and Extended Care teams created a new Community Care-GEC CSP PCAFC Respite Consult and Community Care-GEC CSP PCAFC Respite Note to track and monitor respite requests for caregivers enrolled in the Program of Comprehensive Assistance for Family Caregivers.

CSP Templates/Dialogues

- CSP Approval Note (PCAFC/PGCSS)- Updated options in the referral/resource section and in the information provided section; updated validation rules on required fields
- CSP Discharge Note (PCAFC/PGCSS)- Updated options in the referral/resource section; updated validation rules on required fields
- CSP Denial Note (PCAFC/PGCSS)- Updated options in the referral/resource section and in the information provided section; updated validation rules on required fields
- CSP PCAFC Veterans Functional Assessment Instrument (VFAI) –response template attached to consult—Updated verbiage on multiple instructional sections to clarify steps for clinical assessors to improve standardization and regulation compliance (instructions should be in boiler plate only; not populate in progress note); updated verbiage and options under multiple ADLs/IADLs to clarify the response; improved organization of ADL/IADL sections for ease of use and readability.
- CSP PGCSS Veteran Intake- Added the ability to document up to 3 approved General Caregivers for one Veteran in the template; updated verbiage to include more than one General Caregiver (when applicable)
- GEC CSP PCAFC Respite Note- **New progress note** built to support the GEC CSP PCAFC Respite Consult. This progress note is a separate note to be completed by CSP staff to assist the PCP and GEC with ordering and processing the caregiver's request for respite services.

CSP Consult/TXML

- GEC CSP PCAFC Respite Consult- New consult built to support the CSP's and (Geriatric and Extended Care) GEC's needs to track respite requests specific to PCAFC enrolled Family Caregivers. This consult will be submitted by the Veteran's assigned Primary Care Provider (PCP). Once the consult is submitted, it will be routed to the local CSP team for completion. The CSP team will then forward the consult to the local GEC department to review/process/schedule the respite services.

UPDATE_2_0_418 contains 1 Reminder Exchange entry:

UPDATE_2_0_418 VA-CSP DIALOG UPDATES

The exchange file contains the following components:

TIU TEMPLATE FIELD

DATE (*)
OTHER NON-VA
OTHER TEXT
TEXT (1-40 CHAR) REQ
TEXT (1-70) REQUIRED
VA*CG BLANK SPACE2
VA*CG W-P2LINES(REQ)
VA-BRANCH OF SERVICE
VA-CSP EDIT 30
VA-CSP RELATIONSHIP
VA-CSP WP 2 LINES R
VA-CSP WP 3L IND 2
VA-CSP WP 4 LINES R
VA-WORD
WORD PROCESSING FIELD
YES OR NO
YES / NO
EDIT 20+

HEALTH FACTORS

PGCSS AGREE RECEIVE SERVICES YES
PGCSS CG ADDRESS
PGCSS CG EMAIL
PGCSS CG NAME
PGCSS CG PHONE
PGCSS CG RELATION BROTHER
PGCSS CG RELATION DAUGHTER
PGCSS CG RELATION FATHER
PGCSS CG RELATION FRIEND/NEIGHBOR
PGCSS CG RELATION MOTHER
PGCSS CG RELATION OTHER
PGCSS CG RELATION SIG OTHER
PGCSS CG RELATION SISTER
PGCSS CG RELATION SON
PGCSS CG RELATION SPOUSE
PGCSS CONTACT FACILITY
PGCSS CONTACT IN HOME

PGCSS CONTACT TELEPHONE
PGCSS CONTACT VIDEO
PGCSS LIVES WITH CG NO
PGCSS LIVES WITH CG YES
PGCSS RECEIVING CARE FROM OTHER NO
PGCSS RECEIVING CARE FROM OTHER YES
PROGRAM OF GENERAL CG SUPPORT SERVICES [C]
VA-CSP APPROVAL APPEAL INFO PROVIDED
VA-CSP APPROVAL ASSIST WITH ADL
VA-CSP APPROVAL ASSIST WITH INS AND SUP
VA-CSP APPROVAL ASSIST WITH SUP AND PROT
VA-CSP APPROVAL DATE
VA-CSP APPROVAL DATE LETTER MAILED
VA-CSP APPROVAL INFO CHAMP VA
VA-CSP APPROVAL INFO DC AND REVOCATION
VA-CSP APPROVAL INFO GEN CAREGIVER
VA-CSP APPROVAL INFO OTHER
VA-CSP APPROVAL INFO RESOURCES
VA-CSP APPROVAL INFO ROI
VA-CSP APPROVAL INFO ROLES
VA-CSP APPROVAL INFO STIPEND
VA-CSP APPROVAL KEY CONTACT INFO PROVIDED
VA-CSP APPROVAL LEVEL 1
VA-CSP APPROVAL LEVEL 2
VA-CSP APPROVAL NON-VA ACP FORMS PROVIDED
VA-CSP APPROVAL NOTIFICATION DATE
VA-CSP APPROVAL PCAFC APPEAL FAQs PROVIDED
VA-CSP APPROVAL PRIVACY PRACTICES INFO PROVIDED
VA-CSP APPROVAL VA FORM 10-305 PROVIDED
VA-CSP APPROVED COMP ASSISTANCE
VA-CSP APPROVED GENERAL CG SERVICES
VA-CSP CAREGIVER APPROVAL [C]
VA-CSP CAREGIVER DENIAL [C]
VA-CSP CAREGIVER DISCHARGE [C]
VA-CSP DENIAL AP NOT COMPLETE WI 90D
VA-CSP DENIAL CAREGIVER DECEASED
VA-CSP DENIAL CG NOT 18
VA-CSP DENIAL CG NOT CAPABLE
VA-CSP DENIAL COMMUNICATION DATE
VA-CSP DENIAL DATE
VA-CSP DENIAL DEATH VETERAN OR CG
VA-CSP DENIAL ENROLLING PCAFC
VA-CSP DENIAL GENERAL CAREGIVER INFO PROVIDED
VA-CSP DENIAL KEY CONTACT INFO PROVIDED
VA-CSP DENIAL LETTER SENT
VA-CSP DENIAL NO ADL NEED

VA-CSP DENIAL NO LONGER INTERESTED
VA-CSP DENIAL NO PC TEAM
VA-CSP DENIAL NO SC DISABILITY
VA-CSP DENIAL NOT A VETERAN OR SM
VA-CSP DENIAL NOT ENROLLED VA
VA-CSP DENIAL NOT FAMILY
VA-CSP DENIAL NOT IN BEST INTEREST
VA-CSP DENIAL NOT LIVING IN US
VA-CSP DENIAL NOT NEEDED OR OTHER
VA-CSP DENIAL NOT RECEIVING CARE
VA-CSP DENIAL NOT RECEIVING SERVICES
VA-CSP DENIAL OTHER INFO PROVIDED
VA-CSP DENIAL OTHER REASON
VA-CSP DENIAL PCAFC APPEAL FAQs PROVIDED
VA-CSP DENIAL PCAFC ELIG FACT SHEET
VA-CSP DENIAL REASON DOESNT LIVE IN STATE
VA-CSP DENIAL VA FORM 10-305 PROVIDED
VA-CSP DENIAL VA/COMMUNITY INFO PROVIDED
VA-CSP DENIAL VETERAN DECEASED
VA-CSP DENIAL WITHDREW APPLICATION
VA-CSP DENIED COMP ASSISTANCE
VA-CSP DENIED GENERAL CAREGIVER SERVICES
VA-CSP DISCHARGE BASED ON CG ASSESS
VA-CSP DISCHARGE CAREGIVER DECEASED
VA-CSP DISCHARGE CAREGIVER REQUEST
VA-CSP DISCHARGE CAREGIVER REQUEST IPV
VA-CSP DISCHARGE CEAT DETERMINE
VA-CSP DISCHARGE CG INSTITUTIONALIZED
VA-CSP DISCHARGE CG NOT CAPABLE
VA-CSP DISCHARGE CG UNWILLING
VA-CSP DISCHARGE DATE
VA-CSP DISCHARGE ENROLLED PCAFC
VA-CSP DISCHARGE FACT SHEET PROVIDED
VA-CSP DISCHARGE FRAUD
VA-CSP DISCHARGE GENERAL CAREGIVER INFO
VA-CSP DISCHARGE KEY CONTACT INFO PROVIDED
VA-CSP DISCHARGE LETTER SENT DATE
VA-CSP DISCHARGE NEGLECT OR ABUSE
VA-CSP DISCHARGE NO ADL NEED
VA-CSP DISCHARGE NO CONTACT
VA-CSP DISCHARGE NO PC TEAM
VA-CSP DISCHARGE NO REASSESSMENT
VA-CSP DISCHARGE NO SC DISABILITY
VA-CSP DISCHARGE NO WELLNESS CONTACTS
VA-CSP DISCHARGE NOT ENROLLED VA
VA-CSP DISCHARGE NOT FAMILY

VA-CSP DISCHARGE NOT IN BEST INTEREST
VA-CSP DISCHARGE NOT LIVING IN STATE
VA-CSP DISCHARGE NOT LIVING IN US
VA-CSP DISCHARGE NOT RECEIVING CARE
VA-CSP DISCHARGE NOTIFICATION DATE
VA-CSP DISCHARGE OTHER INFO PROVIDED
VA-CSP DISCHARGE OTHER REASON
VA-CSP DISCHARGE OTHERS PROVIDING
VA-CSP DISCHARGE PCAFC APPEAL FAQs PROVIDED
VA-CSP DISCHARGE PCAFC ELIG FACT SHEET
VA-CSP DISCHARGE PERSONAL SAFETY
VA-CSP DISCHARGE VA ERROR
VA-CSP DISCHARGE VA FORM 10-305 PROVIDED
VA-CSP DISCHARGE VA/COMMUNITY INFO PROVIDED
VA-CSP DISCHARGE VET INSTITUTIONALIZED
VA-CSP DISCHARGE VETERAN DECEASED
VA-CSP DISCHARGE VETERAN OR CG REQUEST
VA-CSP DISCHARGE VETERAN REQUEST
VA-CSP DISCHARGED COMP ASSISTANCE
VA-CSP DISCHARGED GENERAL CG SERVICES
VA-CSP GENERAL CAREGIVER APPROVED
VA-CSP GENERAL CAREGIVER DENIED
VA-CSP GENERAL CAREGIVER DISCHARGED
VA-CSP PCAFC RESPITE [C]
VA-CSP PCAFC RESPITE CLIN APROP NO
VA-CSP PCAFC RESPITE CLIN APROP YES
VA-CSP PCAFC RESPITE REQ ACUTE CARE
VA-CSP PCAFC RESPITE REQ ADHC
VA-CSP PCAFC RESPITE REQ CLC
VA-CSP PCAFC RESPITE REQ CNH
VA-CSP PCAFC RESPITE REQ INSTIT NO
VA-CSP PCAFC RESPITE REQ INSTIT YES
VA-CSP PCAFC RESPITE REQ NON INSTIT NO
VA-CSP PCAFC RESPITE REQ NON INSTIT YES
VA-CSP PCAFC RESPITE REQ NON SKILL HOME
VA-CSP PCAFC RESPITE REQ SKILL HOME
VA-CSP PGCSS CG ADDL1 ADDRESS
VA-CSP PGCSS CG ADDL1 EMAIL
VA-CSP PGCSS CG ADDL1 NAME
VA-CSP PGCSS CG ADDL1 PHONE
VA-CSP PGCSS CG ADDL1 RELATION BROTHER
VA-CSP PGCSS CG ADDL1 RELATION DAUGHTER
VA-CSP PGCSS CG ADDL1 RELATION FATHER
VA-CSP PGCSS CG ADDL1 RELATION FRIEND/NEIGHBOR
VA-CSP PGCSS CG ADDL1 RELATION MOTHER
VA-CSP PGCSS CG ADDL1 RELATION OTHER

VA-CSP PGCSS CG ADDL1 RELATION SIG OTHER
VA-CSP PGCSS CG ADDL1 RELATION SISTER
VA-CSP PGCSS CG ADDL1 RELATION SON
VA-CSP PGCSS CG ADDL1 RELATION SPOUSE
VA-CSP PGCSS CG ADDL2 ADDRESS
VA-CSP PGCSS CG ADDL2 EMAIL
VA-CSP PGCSS CG ADDL2 NAME
VA-CSP PGCSS CG ADDL2 PHONE
VA-CSP PGCSS CG ADDL2 RELATION BROTHER
VA-CSP PGCSS CG ADDL2 RELATION DAUGHTER
VA-CSP PGCSS CG ADDL2 RELATION FATHER
VA-CSP PGCSS CG ADDL2 RELATION FRIEND/NEIGHBOR
VA-CSP PGCSS CG ADDL2 RELATION MOTHER
VA-CSP PGCSS CG ADDL2 RELATION OTHER
VA-CSP PGCSS CG ADDL2 RELATION SIG OTHER
VA-CSP PGCSS CG ADDL2 RELATION SISTER
VA-CSP PGCSS CG ADDL2 RELATION SON
VA-CSP PGCSS CG ADDL2 RELATION SPOUSE
VA-CSP PGCSS INFO OTHER PROVIDED
VA-CSP PGCSS INFO VA/COMM RES PROVIDED
VA-CSP PGCSS LIVES WITH CG ADDL1 NO
VA-CSP PGCSS LIVES WITH CG ADDL1 YES
VA-CSP PGCSS LIVES WITH CG ADDL2 NO
VA-CSP PGCSS LIVES WITH CG ADDL2 YES
VA-CSP PGCSS VET CURR ENR VA CARE NO
VA-CSP PGCSS VET CURR ENR VA CARE YES
VA-CSP PGCSS VET HAS COMM PCP NO
VA-CSP PGCSS VET HAS COMM PCP YES
VA-CSP PGCSS VET HAS VA PCP NO
VA-CSP PGCSS VET HAS VA PCP YES
VA-CSP PRIMARY CAREGIVER APPROVED
VA-CSP PRIMARY CAREGIVER DENIED
VA-CSP PRIMARY CAREGIVER DISCHARGED
VA-CSP SECONDARY CAREGIVER 2 APPROVED
VA-CSP SECONDARY CAREGIVER 2 DENIED
VA-CSP SECONDARY CAREGIVER 2 DISCHARGED
VA-CSP SECONDARY CAREGIVER APPROVED
VA-CSP SECONDARY CAREGIVER DENIED
VA-CSP SECONDARY CAREGIVER DISCHARGED
VA-CSP VET FUNCTIONAL ASSESS INSTRUMENT [C]
VA-CSP VETERAN APPROVED
VA-CSP VETERAN DENIED
VA-CSP VETERAN DISCHARGED
VA-CSP VFAI ADL BATHE DEP
VA-CSP VFAI ADL BATHE IND
VA-CSP VFAI ADL BATHE MAX

VA-CSP VFAI ADL BATHE MOD
VA-CSP VFAI ADL BATHE NOTAPP
VA-CSP VFAI ADL BATHE NOTATT
VA-CSP VFAI ADL BATHE REFUSED
VA-CSP VFAI ADL BATHE SET-UP
VA-CSP VFAI ADL BATHE SOMETIMES ASSIST REQ
VA-CSP VFAI ADL BATHE SUP
VA-CSP VFAI ADL CHAIR TRNSFR DEP
VA-CSP VFAI ADL CHAIR TRNSFR IND
VA-CSP VFAI ADL CHAIR TRNSFR MAX
VA-CSP VFAI ADL CHAIR TRNSFR MOD
VA-CSP VFAI ADL CHAIR TRNSFR NOTAPP
VA-CSP VFAI ADL CHAIR TRNSFR NOTATT
VA-CSP VFAI ADL CHAIR TRNSFR REFUSED
VA-CSP VFAI ADL CHAIR TRNSFR SET-UP
VA-CSP VFAI ADL CHAIR TRNSFR SOMETIMES ASSIST REQ
VA-CSP VFAI ADL CHAIR TRNSFR SUP
VA-CSP VFAI ADL DRESS LOWER DEP
VA-CSP VFAI ADL DRESS LOWER IND
VA-CSP VFAI ADL DRESS LOWER MAX
VA-CSP VFAI ADL DRESS LOWER MOD
VA-CSP VFAI ADL DRESS LOWER NOTAPP
VA-CSP VFAI ADL DRESS LOWER NOTATT
VA-CSP VFAI ADL DRESS LOWER REFUSED
VA-CSP VFAI ADL DRESS LOWER SET-UP
VA-CSP VFAI ADL DRESS LOWER SOMETIMES ASSIST REQ
VA-CSP VFAI ADL DRESS LOWER SUP
VA-CSP VFAI ADL DRESS TOP DEP
VA-CSP VFAI ADL DRESS TOP IND
VA-CSP VFAI ADL DRESS TOP MAX
VA-CSP VFAI ADL DRESS TOP MOD
VA-CSP VFAI ADL DRESS TOP NOTAPP
VA-CSP VFAI ADL DRESS TOP NOTATT
VA-CSP VFAI ADL DRESS TOP REFUSED
VA-CSP VFAI ADL DRESS TOP SET-UP
VA-CSP VFAI ADL DRESS TOP SOMETIMES ASSIST REQ
VA-CSP VFAI ADL DRESS TOP SUP
VA-CSP VFAI ADL EAT DEP
VA-CSP VFAI ADL EAT IND
VA-CSP VFAI ADL EAT MAX
VA-CSP VFAI ADL EAT MOD
VA-CSP VFAI ADL EAT NOTAPP
VA-CSP VFAI ADL EAT NOTATT
VA-CSP VFAI ADL EAT REFUSED
VA-CSP VFAI ADL EAT SET-UP
VA-CSP VFAI ADL EAT SOMETIMES ASSIST REQ

VA-CSP VFAI ADL EAT SUP
VA-CSP VFAI ADL FOOTWEAR DEP
VA-CSP VFAI ADL FOOTWEAR IND
VA-CSP VFAI ADL FOOTWEAR MAX
VA-CSP VFAI ADL FOOTWEAR MOD
VA-CSP VFAI ADL FOOTWEAR NOTAPP
VA-CSP VFAI ADL FOOTWEAR NOTATT
VA-CSP VFAI ADL FOOTWEAR REFUSED
VA-CSP VFAI ADL FOOTWEAR SET-UP
VA-CSP VFAI ADL FOOTWEAR SOMETIMES ASSIST REQ
VA-CSP VFAI ADL FOOTWEAR SUP
VA-CSP VFAI ADL LYING TO SIT DEP
VA-CSP VFAI ADL LYING TO SIT IND
VA-CSP VFAI ADL LYING TO SIT MAX
VA-CSP VFAI ADL LYING TO SIT MOD
VA-CSP VFAI ADL LYING TO SIT NOTAPP
VA-CSP VFAI ADL LYING TO SIT NOTATT
VA-CSP VFAI ADL LYING TO SIT REFUSED
VA-CSP VFAI ADL LYING TO SIT SET-UP
VA-CSP VFAI ADL LYING TO SIT SOMETIMES ASSIST REQ
VA-CSP VFAI ADL LYING TO SIT SUP
VA-CSP VFAI ADL MBLTY ROLL DEP
VA-CSP VFAI ADL MBLTY ROLL IND
VA-CSP VFAI ADL MBLTY ROLL MAX
VA-CSP VFAI ADL MBLTY ROLL MOD
VA-CSP VFAI ADL MBLTY ROLL NOTAPP
VA-CSP VFAI ADL MBLTY ROLL NOTATT
VA-CSP VFAI ADL MBLTY ROLL REFUSED
VA-CSP VFAI ADL MBLTY ROLL SET-UP
VA-CSP VFAI ADL MBLTY ROLL SOMETIMES ASSIST REQ
VA-CSP VFAI ADL MBLTY ROLL SUP
VA-CSP VFAI ADL ORAL DEP
VA-CSP VFAI ADL ORAL IND
VA-CSP VFAI ADL ORAL MAX
VA-CSP VFAI ADL ORAL MOD
VA-CSP VFAI ADL ORAL NOTAPP
VA-CSP VFAI ADL ORAL NOTATT
VA-CSP VFAI ADL ORAL REFUSED
VA-CSP VFAI ADL ORAL SET-UP
VA-CSP VFAI ADL ORAL SOMETIMES ASSIST REQ
VA-CSP VFAI ADL ORAL SUP
VA-CSP VFAI ADL PROSTHETICS DEP
VA-CSP VFAI ADL PROSTHETICS IND
VA-CSP VFAI ADL PROSTHETICS MAX
VA-CSP VFAI ADL PROSTHETICS MOD
VA-CSP VFAI ADL PROSTHETICS NOTAPP

VA-CSP VFAI ADL PROSTHETICS NOTATT
VA-CSP VFAI ADL PROSTHETICS REFUSED
VA-CSP VFAI ADL PROSTHETICS SET-UP
VA-CSP VFAI ADL PROSTHETICS SOMETIMES ASSIST REQ
VA-CSP VFAI ADL PROSTHETICS SUP
VA-CSP VFAI ADL SIT TO LYING DEP
VA-CSP VFAI ADL SIT TO LYING IND
VA-CSP VFAI ADL SIT TO LYING MAX
VA-CSP VFAI ADL SIT TO LYING MOD
VA-CSP VFAI ADL SIT TO LYING NOTAPP
VA-CSP VFAI ADL SIT TO LYING NOTATT
VA-CSP VFAI ADL SIT TO LYING REFUSED
VA-CSP VFAI ADL SIT TO LYING SET-UP
VA-CSP VFAI ADL SIT TO LYING SOMETIMES ASSIST REQ
VA-CSP VFAI ADL SIT TO LYING SUP
VA-CSP VFAI ADL SIT TO STAND DEP
VA-CSP VFAI ADL SIT TO STAND IND
VA-CSP VFAI ADL SIT TO STAND MAX
VA-CSP VFAI ADL SIT TO STAND MOD
VA-CSP VFAI ADL SIT TO STAND NOTAPP
VA-CSP VFAI ADL SIT TO STAND NOTATT
VA-CSP VFAI ADL SIT TO STAND REFUSED
VA-CSP VFAI ADL SIT TO STAND SET-UP
VA-CSP VFAI ADL SIT TO STAND SOMETIMES ASSIST REQ
VA-CSP VFAI ADL SIT TO STAND SUP
VA-CSP VFAI ADL TOILET TRNSFR DEP
VA-CSP VFAI ADL TOILET TRNSFR IND
VA-CSP VFAI ADL TOILET TRNSFR MAX
VA-CSP VFAI ADL TOILET TRNSFR MOD
VA-CSP VFAI ADL TOILET TRNSFR NOTAPP
VA-CSP VFAI ADL TOILET TRNSFR NOTATT
VA-CSP VFAI ADL TOILET TRNSFR REFUSED
VA-CSP VFAI ADL TOILET TRNSFR SET-UP
VA-CSP VFAI ADL TOILET TRNSFR SOMETIMES ASSIST
VA-CSP VFAI ADL TOILET TRNSFR SUP
VA-CSP VFAI ADL TOILETING DEP
VA-CSP VFAI ADL TOILETING IND
VA-CSP VFAI ADL TOILETING MAX
VA-CSP VFAI ADL TOILETING MOD
VA-CSP VFAI ADL TOILETING NOTAPP
VA-CSP VFAI ADL TOILETING NOTATT
VA-CSP VFAI ADL TOILETING REFUSED
VA-CSP VFAI ADL TOILETING SET-UP
VA-CSP VFAI ADL TOILETING SOMETIMES ASSIST REQ
VA-CSP VFAI ADL TOILETING SUP
VA-CSP VFAI ADL WASH DEP

VA-CSP VFAI ADL WASH IND
VA-CSP VFAI ADL WASH MAX
VA-CSP VFAI ADL WASH MOD
VA-CSP VFAI ADL WASH NOTAPP
VA-CSP VFAI ADL WASH NOTATT
VA-CSP VFAI ADL WASH REFUSED
VA-CSP VFAI ADL WASH SET-UP
VA-CSP VFAI ADL WASH SOMETIMES ASSIST REQ
VA-CSP VFAI ADL WASH SUP
VA-CSP VFAI AGITX BHVRMGMT PHYSRESISTS
VA-CSP VFAI AGITX BHVRMGMT RESISTS
VA-CSP VFAI AGITX CUES
VA-CSP VFAI AGITX FREQ 1XWEEK
VA-CSP VFAI AGITX FREQ 2XWEEK
VA-CSP VFAI AGITX FREQ 3XWEEK
VA-CSP VFAI AGITX FREQ 4MOREWEEK
VA-CSP VFAI AGITX FREQ DAILY
VA-CSP VFAI AGITX FREQ LESSWEEKLY
VA-CSP VFAI AGITX NOINTERVENTION
VA-CSP VFAI AGITX REDIRECTION
VA-CSP VFAI AGITYPE EASILYAGITATED
VA-CSP VFAI AGITYPE EASILYANGERED
VA-CSP VFAI AGITYPE EASILYFRUSTRATED
VA-CSP VFAI AGITYPE OTHER
VA-CSP VFAI ATRISK NEGLECTABUSE NO
VA-CSP VFAI ATRISK NEGLECTABUSE YES
VA-CSP VFAI DELTX BHVRMGMT PHYSRESISTS
VA-CSP VFAI DELTX BHVRMGMT RESISTS
VA-CSP VFAI DELTX CUES
VA-CSP VFAI DELTX FREQ 1XWEEK
VA-CSP VFAI DELTX FREQ 2XWEEK
VA-CSP VFAI DELTX FREQ 3XWEEK
VA-CSP VFAI DELTX FREQ 4MOREWEEK
VA-CSP VFAI DELTX FREQ DAILY
VA-CSP VFAI DELTX FREQ LESSWEEKLY
VA-CSP VFAI DELTX NOINTERVENTION
VA-CSP VFAI DELTX REDIRECTION
VA-CSP VFAI DELTYPE CATATONIC
VA-CSP VFAI DELTYPE DELUSIONS
VA-CSP VFAI DELTYPE DISORGANIZEDSPEECH
VA-CSP VFAI DELTYPE HALLUCINATIONS
VA-CSP VFAI DELTYPE OTHER
VA-CSP VFAI DELTYPE THOUGHTDISORDER
VA-CSP VFAI IMPTX BHVRMGMT PHYSRESISTS
VA-CSP VFAI IMPTX BHVRMGMT RESISTS
VA-CSP VFAI IMPTX CUES

VA-CSP VFAI IMPTX FREQ 1XWEEK
VA-CSP VFAI IMPTX FREQ 2XWEEK
VA-CSP VFAI IMPTX FREQ 3XWEEK
VA-CSP VFAI IMPTX FREQ 4MOREWEEK
VA-CSP VFAI IMPTX FREQ DAILY
VA-CSP VFAI IMPTX FREQ LESSWEEKLY
VA-CSP VFAI IMPTX NOINTERVENTION
VA-CSP VFAI IMPTX REDIRECTION
VA-CSP VFAI IMPTYPE DISREGARD
VA-CSP VFAI IMPTYPE EASILYINFLUENCE
VA-CSP VFAI IMPTYPE FINANCIAL
VA-CSP VFAI IMPTYPE HIGHRISKBEHAVIORS
VA-CSP VFAI IMPTYPE OTHER
VA-CSP VFAI IMPTYPE THOUGHTLESS
VA-CSP VFAI INSTR CONTNEEDS NO
VA-CSP VFAI INSTR CONTNEEDS YES
VA-CSP VFAI INSTR NEEDS NO
VA-CSP VFAI INSTR NEEDS YES
VA-CSP VFAI MANUALWC 150FT DEP
VA-CSP VFAI MANUALWC 150FT IND
VA-CSP VFAI MANUALWC 150FT MAX
VA-CSP VFAI MANUALWC 150FT MOD
VA-CSP VFAI MANUALWC 150FT NOTAPP
VA-CSP VFAI MANUALWC 150FT NOTATT
VA-CSP VFAI MANUALWC 150FT REFUSED
VA-CSP VFAI MANUALWC 150FT SET-UP
VA-CSP VFAI MANUALWC 150FT SOMETIMES ASSIST REQ
VA-CSP VFAI MANUALWC 150FT SUP
VA-CSP VFAI MANUALWC 15MIN DEP
VA-CSP VFAI MANUALWC 15MIN IND
VA-CSP VFAI MANUALWC 15MIN MAX
VA-CSP VFAI MANUALWC 15MIN MOD
VA-CSP VFAI MANUALWC 15MIN NOTAPP
VA-CSP VFAI MANUALWC 15MIN NOTATT
VA-CSP VFAI MANUALWC 15MIN REFUSED
VA-CSP VFAI MANUALWC 15MIN SET-UP
VA-CSP VFAI MANUALWC 15MIN SOMETIMES ASSIST REQ
VA-CSP VFAI MANUALWC 15MIN SUP
VA-CSP VFAI MANUALWC 50FT DEP
VA-CSP VFAI MANUALWC 50FT IND
VA-CSP VFAI MANUALWC 50FT MAX
VA-CSP VFAI MANUALWC 50FT MOD
VA-CSP VFAI MANUALWC 50FT NOTAPP
VA-CSP VFAI MANUALWC 50FT NOTATT
VA-CSP VFAI MANUALWC 50FT REFUSED
VA-CSP VFAI MANUALWC 50FT SET-UP

VA-CSP VFAI MANUALWC 50FT SOMETIMES ASSIST REQ
VA-CSP VFAI MANUALWC 50FT SUP
VA-CSP VFAI MANUALWC CROSSSTREET DEP
VA-CSP VFAI MANUALWC CROSSSTREET IND
VA-CSP VFAI MANUALWC CROSSSTREET MAX
VA-CSP VFAI MANUALWC CROSSSTREET MOD
VA-CSP VFAI MANUALWC CROSSSTREET NOTAPP
VA-CSP VFAI MANUALWC CROSSSTREET NOTATT
VA-CSP VFAI MANUALWC CROSSSTREET REFUSED
VA-CSP VFAI MANUALWC CROSSSTREET SET-UP
VA-CSP VFAI MANUALWC CROSSSTREET SOMETIMES
VA-CSP VFAI MANUALWC CROSSSTREET SUP
VA-CSP VFAI MEDMNGMNT ADMINISTRATION
VA-CSP VFAI MEDMNGMNT NO
VA-CSP VFAI MEDMNGMNT NOANS
VA-CSP VFAI MEDMNGMNT NOHELP
VA-CSP VFAI MEDMNGMNT REMINDERS
VA-CSP VFAI MEDMNGMNT SET-UP
VA-CSP VFAI MEDMNGMNT YES
VA-CSP VFAI MOBILITY MANWHLCHR
VA-CSP VFAI MOBILITY MOTWHLCHR
VA-CSP VFAI MOBILITY NOWLK NOWHLCHR
VA-CSP VFAI MOBILITY WALKS
VA-CSP VFAI MOTORWC 150FT DEP
VA-CSP VFAI MOTORWC 150FT IND
VA-CSP VFAI MOTORWC 150FT MAX
VA-CSP VFAI MOTORWC 150FT MOD
VA-CSP VFAI MOTORWC 150FT NOTAPP
VA-CSP VFAI MOTORWC 150FT NOTATT
VA-CSP VFAI MOTORWC 150FT REFUSED
VA-CSP VFAI MOTORWC 150FT SET-UP
VA-CSP VFAI MOTORWC 150FT SOMETIMES ASSIST REQ
VA-CSP VFAI MOTORWC 150FT SUP
VA-CSP VFAI MOTORWC 15MIN DEP
VA-CSP VFAI MOTORWC 15MIN IND
VA-CSP VFAI MOTORWC 15MIN MAX
VA-CSP VFAI MOTORWC 15MIN MOD
VA-CSP VFAI MOTORWC 15MIN NOTAPP
VA-CSP VFAI MOTORWC 15MIN NOTATT
VA-CSP VFAI MOTORWC 15MIN REFUSED
VA-CSP VFAI MOTORWC 15MIN SET-UP
VA-CSP VFAI MOTORWC 15MIN SOMETIMES ASSIST REQ
VA-CSP VFAI MOTORWC 15MIN SUP
VA-CSP VFAI MOTORWC 50FT DEP
VA-CSP VFAI MOTORWC 50FT IND
VA-CSP VFAI MOTORWC 50FT MAX

VA-CSP VFAI MOTORWC 50FT MOD
VA-CSP VFAI MOTORWC 50FT NOTAPP
VA-CSP VFAI MOTORWC 50FT NOTATT
VA-CSP VFAI MOTORWC 50FT REFUSED
VA-CSP VFAI MOTORWC 50FT SET-UP
VA-CSP VFAI MOTORWC 50FT SOMETIMES ASSIST REQ
VA-CSP VFAI MOTORWC 50FT SUP
VA-CSP VFAI MOTORWC CROSSSTREET DEP
VA-CSP VFAI MOTORWC CROSSSTREET IND
VA-CSP VFAI MOTORWC CROSSSTREET MAX
VA-CSP VFAI MOTORWC CROSSSTREET MOD
VA-CSP VFAI MOTORWC CROSSSTREET NOTAPP
VA-CSP VFAI MOTORWC CROSSSTREET NOTATT
VA-CSP VFAI MOTORWC CROSSSTREET REFUSED
VA-CSP VFAI MOTORWC CROSSSTREET SET-UP
VA-CSP VFAI MOTORWC CROSSSTREET SOMETIMES
VA-CSP VFAI MOTORWC CROSSSTREET SUP
VA-CSP VFAI REQSUP AWAYHOME CONSTANT
VA-CSP VFAI REQSUP AWAYHOME INTENSE
VA-CSP VFAI REQSUP AWAYHOME NOHELP
VA-CSP VFAI REQSUP AWAYHOME SOMEHELP
VA-CSP VFAI REQSUP STAYHOME ALONE1HR
VA-CSP VFAI REQSUP STAYHOME ALONEMOSTDAY
VA-CSP VFAI REQSUP STAYHOME ALWAYS
VA-CSP VFAI REQSUP STAYHOME DAILYCHK-IN
VA-CSP VFAI REQSUP STAYHOME NOCHK-INS
VA-CSP VFAI REQSUP STAYHOME NOWANDTHEN
VA-CSP VFAI RISKSELF-NEGLECT NO
VA-CSP VFAI RISKSELF-NEGLECT YES
VA-CSP VFAI SAFETY AGITATION NO
VA-CSP VFAI SAFETY AGITATION NOTAPP
VA-CSP VFAI SAFETY AGITATION YES
VA-CSP VFAI SAFETY DELUSIONS NO
VA-CSP VFAI SAFETY DELUSIONS NOTAPP
VA-CSP VFAI SAFETY DELUSIONS YES
VA-CSP VFAI SAFETY IMPULSIVITY NO
VA-CSP VFAI SAFETY IMPULSIVITY NOTAPP
VA-CSP VFAI SAFETY IMPULSIVITY YES
VA-CSP VFAI SAFETY WANDERING NO
VA-CSP VFAI SAFETY WANDERING NOTAPP
VA-CSP VFAI SAFETY WANDERING YES
VA-CSP VFAI SELF-DIR HLTHSAFETY NO
VA-CSP VFAI SELF-DIR HLTHSAFETY YES
VA-CSP VFAI SELF-DIR IDNEEDS NO
VA-CSP VFAI SELF-DIR IDNEEDS YES
VA-CSP VFAI SELF-PRES IND

VA-CSP VFAI SELF-PRES MENTALLYPHYSUNABLE
VA-CSP VFAI SELF-PRES MENTALLYUNABLE
VA-CSP VFAI SELF-PRES MIN
VA-CSP VFAI SELF-PRES PHYSUNABLE
VA-CSP VFAI VETRISKFACTOR ALCOHOL
VA-CSP VFAI VETRISKFACTOR BEHAVIORS
VA-CSP VFAI VETRISKFACTOR DEHYDRATION
VA-CSP VFAI VETRISKFACTOR HYGIENE
VA-CSP VFAI VETRISKFACTOR IMPAIRMENT
VA-CSP VFAI VETRISKFACTOR LIVINGCOND
VA-CSP VFAI VETRISKFACTOR NOTAPP
VA-CSP VFAI VETRISKFACTOR OTHER
VA-CSP VFAI VETRISKFACTOR UNABLEMNGMEDS
VA-CSP VFAI WALKS 12STEPS DEP
VA-CSP VFAI WALKS 12STEPS IND
VA-CSP VFAI WALKS 12STEPS MAX
VA-CSP VFAI WALKS 12STEPS MOD
VA-CSP VFAI WALKS 12STEPS NOTAPP
VA-CSP VFAI WALKS 12STEPS NOTATT
VA-CSP VFAI WALKS 12STEPS REFUSED
VA-CSP VFAI WALKS 12STEPS SET-UP
VA-CSP VFAI WALKS 12STEPS SOMETIMES ASSIST REQ
VA-CSP VFAI WALKS 12STEPS SUP
VA-CSP VFAI WALKS 4STEPS DEP
VA-CSP VFAI WALKS 4STEPS IND
VA-CSP VFAI WALKS 4STEPS MAX
VA-CSP VFAI WALKS 4STEPS MOD
VA-CSP VFAI WALKS 4STEPS NOTAPP
VA-CSP VFAI WALKS 4STEPS NOTATT
VA-CSP VFAI WALKS 4STEPS REFUSED
VA-CSP VFAI WALKS 4STEPS SET-UP
VA-CSP VFAI WALKS 4STEPS SOMETIMES ASSIST REQ
VA-CSP VFAI WALKS 4STEPS SUP
VA-CSP VFAI WALKS CARRYBOTHHANDS DEP
VA-CSP VFAI WALKS CARRYBOTHHANDS IND
VA-CSP VFAI WALKS CARRYBOTHHANDS MAX
VA-CSP VFAI WALKS CARRYBOTHHANDS MOD
VA-CSP VFAI WALKS CARRYBOTHHANDS NOTAPP
VA-CSP VFAI WALKS CARRYBOTHHANDS NOTATT
VA-CSP VFAI WALKS CARRYBOTHHANDS REFUSED
VA-CSP VFAI WALKS CARRYBOTHHANDS SET-UP
VA-CSP VFAI WALKS CARRYBOTHHANDS SOMETIMES
VA-CSP VFAI WALKS CARRYBOTHHANDS SUP
VA-CSP VFAI WALKS CROSSSTREET DEP
VA-CSP VFAI WALKS CROSSSTREET IND
VA-CSP VFAI WALKS CROSSSTREET MAX

VA-CSP VFAI WALKS CROSSSTREET MOD
VA-CSP VFAI WALKS CROSSSTREET NOTAPP
VA-CSP VFAI WALKS CROSSSTREET NOTATT
VA-CSP VFAI WALKS CROSSSTREET REFUSED
VA-CSP VFAI WALKS CROSSSTREET SET-UP
VA-CSP VFAI WALKS CROSSSTREET SOMETIMES ASSIST
VA-CSP VFAI WALKS CROSSSTREET SUP
VA-CSP VFAI WALKS CURB DEP
VA-CSP VFAI WALKS CURB IND
VA-CSP VFAI WALKS CURB MAX
VA-CSP VFAI WALKS CURB MOD
VA-CSP VFAI WALKS CURB NOTAPP
VA-CSP VFAI WALKS CURB NOTATT
VA-CSP VFAI WALKS CURB REFUSED
VA-CSP VFAI WALKS CURB SET-UP
VA-CSP VFAI WALKS CURB SOMETIMES ASSIST REQ
VA-CSP VFAI WALKS CURB SUP
VA-CSP VFAI WALKS PICKUPOBJECT DEP
VA-CSP VFAI WALKS PICKUPOBJECT IND
VA-CSP VFAI WALKS PICKUPOBJECT MAX
VA-CSP VFAI WALKS PICKUPOBJECT MOD
VA-CSP VFAI WALKS PICKUPOBJECT NOTAPP
VA-CSP VFAI WALKS PICKUPOBJECT NOTATT
VA-CSP VFAI WALKS PICKUPOBJECT REFUSED
VA-CSP VFAI WALKS PICKUPOBJECT SET-UP
VA-CSP VFAI WALKS PICKUPOBJECT SOMETIMES ASSIST
VA-CSP VFAI WALKS PICKUPOBJECT SUP
VA-CSP VFAI WALKS WALK10FT DEP
VA-CSP VFAI WALKS WALK10FT IND
VA-CSP VFAI WALKS WALK10FT MAX
VA-CSP VFAI WALKS WALK10FT MOD
VA-CSP VFAI WALKS WALK10FT NOTAPP
VA-CSP VFAI WALKS WALK10FT NOTATT
VA-CSP VFAI WALKS WALK10FT REFUSED
VA-CSP VFAI WALKS WALK10FT SET-UP
VA-CSP VFAI WALKS WALK10FT SOMETIMES ASSIST REQ
VA-CSP VFAI WALKS WALK10FT SUP
VA-CSP VFAI WALKS WALK10FTUNEVEN DEP
VA-CSP VFAI WALKS WALK10FTUNEVEN IND
VA-CSP VFAI WALKS WALK10FTUNEVEN MAX
VA-CSP VFAI WALKS WALK10FTUNEVEN MOD
VA-CSP VFAI WALKS WALK10FTUNEVEN NOTAPP
VA-CSP VFAI WALKS WALK10FTUNEVEN NOTATT
VA-CSP VFAI WALKS WALK10FTUNEVEN REFUSED
VA-CSP VFAI WALKS WALK10FTUNEVEN SET-UP
VA-CSP VFAI WALKS WALK10FTUNEVEN SOMETIMES

VA-CSP VFAI WALKS WALK10FTUNEVEN SUP
VA-CSP VFAI WALKS WALK150FT DEP
VA-CSP VFAI WALKS WALK150FT IND
VA-CSP VFAI WALKS WALK150FT MAX
VA-CSP VFAI WALKS WALK150FT MOD
VA-CSP VFAI WALKS WALK150FT NOTAPP
VA-CSP VFAI WALKS WALK150FT NOTATT
VA-CSP VFAI WALKS WALK150FT REFUSED
VA-CSP VFAI WALKS WALK150FT SET-UP
VA-CSP VFAI WALKS WALK150FT SOMETIMES ASSIST REQ
VA-CSP VFAI WALKS WALK150FT SUP
VA-CSP VFAI WALKS WALK50FT DEP
VA-CSP VFAI WALKS WALK50FT IND
VA-CSP VFAI WALKS WALK50FT MAX
VA-CSP VFAI WALKS WALK50FT MOD
VA-CSP VFAI WALKS WALK50FT NOTAPP
VA-CSP VFAI WALKS WALK50FT NOTATT
VA-CSP VFAI WALKS WALK50FT REFUSED
VA-CSP VFAI WALKS WALK50FT SET-UP
VA-CSP VFAI WALKS WALK50FT SOMETIMES ASSIST REQ
VA-CSP VFAI WALKS WALK50FT SUP
VA-CSP VFAI WALKS WALKINDOORS DEP
VA-CSP VFAI WALKS WALKINDOORS IND
VA-CSP VFAI WALKS WALKINDOORS MAX
VA-CSP VFAI WALKS WALKINDOORS MOD
VA-CSP VFAI WALKS WALKINDOORS NOTAPP
VA-CSP VFAI WALKS WALKINDOORS NOTATT
VA-CSP VFAI WALKS WALKINDOORS REFUSED
VA-CSP VFAI WALKS WALKINDOORS SET-UP
VA-CSP VFAI WALKS WALKINDOORS SOMETIMES ASSIST
VA-CSP VFAI WALKS WALKINDOORS SUP
VA-CSP VFAI WALKS WALKS15MIN DEP
VA-CSP VFAI WALKS WALKS15MIN IND
VA-CSP VFAI WALKS WALKS15MIN MAX
VA-CSP VFAI WALKS WALKS15MIN MOD
VA-CSP VFAI WALKS WALKS15MIN NOTAPP
VA-CSP VFAI WALKS WALKS15MIN NOTATT
VA-CSP VFAI WALKS WALKS15MIN REFUSED
VA-CSP VFAI WALKS WALKS15MIN SET-UP
VA-CSP VFAI WALKS WALKS15MIN SOMETIMES ASSIST
VA-CSP VFAI WALKS WALKS15MIN SUP
VA-CSP VFAI WANTX BHVRMGMT PHYSRESISTS
VA-CSP VFAI WANTX BHVRMGMT RESISTS
VA-CSP VFAI WANTX CUES
VA-CSP VFAI WANTX FREQ 1XWEEK
VA-CSP VFAI WANTX FREQ 2XWEEK

VA-CSP VFAI WANTX FREQ 3XWEEK
VA-CSP VFAI WANTX FREQ 4MOREWEEK
VA-CSP VFAI WANTX FREQ DAILY
VA-CSP VFAI WANTX FREQ LESSWEEKLY
VA-CSP VFAI WANTX NOINTERVENTION
VA-CSP VFAI WANTX REDIRECTION
VA-CSP VFAI WANTYPE LEAVES AREA/HOME
VA-CSP VFAI WANTYPE WANDERS AWAY COMM
VA-REMINDER UPDATES [C]
VA-UPDATE_2_0_418

REMINDER SPONSOR

CAREGIVER SUPPORT PROGRAM

REMINDER TERM

VA-REMINDER UPDATE_2_0_418

REMINDER DIALOG

VA-CSP PROGRAM APPROVAL
VA-CSP PROGRAM DENIAL
VA-CSP PROGRAM DISCHARGE
VA-CSP VETERAN FUNCTIONAL ASSESSMENT INSTRUMENT
VA-PGCSS VETERAN INTAKE
VA-CSP PCAFC RESPITE NOTE

TIU OBJECTS

PATIENT NAME
PATIENT DATE OF BIRTH
PATIENT SSN
SERVICE DISABILITIES

Pre-Installation Steps

1. Identify TIU objects to display patient address and patient phone number.

Install Details

This update is being distributed as a web host file. The address for the host file is:

https://REDACTED/UPDATE_2_0_418.PRD

The file will be installed using Reminder Exchange, programmer access is not required.

Installation:

=====

This update can be loaded with users on the system. Installation will take less than 45 minutes.

Install Example

To Load the Web Host File. Navigate to Reminder exchange in Vista

```
CFE Create Exchange File Entry      LHF Load Host File
CHF Create Host File                LMM Load MailMan Message
CMM Create MailMan Message          LR List Reminder Definitions
DFE Delete Exchange File Entry      LWH Load Web Host File
IFE Install Exchange File Entry      RI Reminder Definition Inquiry
IH Installation History              RP Repack
Select Action: Next Screen// LWH Load Web Host File
Input the URL for the .prd file: https://[REDACTED]/UPDATE_2_0_418_5.PRD
```

At the **Select Action:** prompt, enter **LWH** for Load Web Host File

At the **Input the url for the .prd file:** prompt, type the following web address:

https://REDACTED/UPDATE_2_0_418.PRD

You should see a message at the top of your screen that the file successfully loaded.

Search and locate an entry titled **UPDATE_2_0_418 VA-CSP DIALOG UPDATES** in reminder exchange.

```
+Item  Entry                               Source                               Date Packed
666    UPDATE_2_0_418 VA-CSP DIALOG
      UPDATES
667    UPDATE_2_0_42 VA-TELERETINOPAT
      HY NOTES
668    UPDATE_2_0_420 VA-POST 911
      MILITARY TO VA TEMPLATES
669    UPDATE_2_0_43 VA-SUICIDE RISK
      EVALUATION
670    UPDATE_2_0_44 VA-MHRRTP
      TEMPLATES
+      + Next Screen  - Prev Screen  ?? More Actions  >>>
CFE Create Exchange File Entry      LHF Load Host File
CHF Create Host File                LMM Load MailMan Message
CMM Create MailMan Message          LR List Reminder Definitions
DFE Delete Exchange File Entry      LWH Load Web Host File
IFE Install Exchange File Entry      RI Reminder Definition Inquiry
IH Installation History              RP Repack
Select Action: Next Screen// IFE Install Exchange File Entry
Enter a list or range of numbers (1-891): 666
```

At the **Select Action** prompt, enter **IFE** for Install Exchange File Entry

Enter the number that corresponds with your entry UPDATE_2_0_418 VA-CSP DIALOG UPDATES (*in this example it is entry 666. It will vary by site*). The date of the exchange file should be 04/18/2024.

```

Description:
The following Clinical Reminder items were selected for packing:
REMINDER DIALOG
  VA-CSP PROGRAM APPROVAL
  VA-CSP PROGRAM DENIAL
  VA-CSP PROGRAM DISCHARGE
  VA-PGCSS VETERAN INTAKE
  VA-CSP VETERAN FUNCTIONAL ASSESSMENT INSTRUMENT
  VA-CSP PCAFC RESPITE NOTE

REMINDER TERM
  VA-REMINDER UPDATE_2_0_418
+      Enter ?? for more actions                                >>>
IA  Install all Components          IS  Install Selected Component
Select Action: Next Screen// IA  Install all Components .....

```

At the **Select Action** prompt, type **IA** for Install all Components and hit enter.
 Select Action: Next Screen// **IA Install all Components**

You will see several prompts, for all new entries you will choose **I to Install**

For components that already exists but the packed component is different, choose **O to Overwrite**.

You will be prompted to install the **FIRST reminder dialog component (VA-CSP PCAFC RESPITE NOTE)**. You will choose to install all even though some components may have an X to indicate that they exist.

```

Packed reminder dialog: VA-CSP PCAFC RESPITE NOTE [NATIONAL DIALOG]

```

Item	Seq.	Dialog Findings	Type	Exists
1		VA-CSP PCAFC RESPITE NOTE	dialog	X
2	10	VA-CSP GP PCAFC RESPITE PLACEHOLDER Finding: *NONE*	group	X
3	10.10	VA-CSP PCAFC RESPITE NOTE VERSION Finding: *NONE*	element	X
4	10.20	VA-CSP GP PCAFC RESPITE REQUEST Finding: *NONE*	group	X
5	10.20.10	VA-CSP GP PCAFC RESPITE NON-INST SETTING Finding: VA-CSP PCAFC RESPITE REQ NON-INS SETTING (HEALTH FACTOR)	group	X X
6	10.20.10.10	VA-CSP GP PCAFC RESPITE COMMUNITY ADULT DAY HEALTH CARE Finding: VA-CSP PCAFC RESPITE REQ ADHC (HEALTH FACTOR)	group	X X
7	10.20.10.10.10	VA-CSP PCAFC RESPITE CADHC START DATE	element	X

```

+      + Next Screen  - Prev Screen  ?? More Actions
DD  Dialog Details      DT  Dialog Text      IS  Install Selected
DF  Dialog Findings    DU  Dialog Usage    QU  Quit
DS  Dialog Summary     IA  Install All
Select Action: Next Screen// IA

```

At the **Select Action** prompt, type **IA** to install the dialog: **VA-CSP PCAFC RESPITE NOTE**

Select Action: Next Screen// **IA Install All**

Install reminder dialog and all components with no further changes: Y// **Yes**

```

Packed reminder dialog: VA-CSP PCAFC RESPITE NOTE [NATIONAL DIALOG]
VA-CSP PCAFC RESPITE NOTE (reminder dialog) installed from exchange file.
Item  Seq. Dialog Findings                                     Type  Exists
  1    VA-CSP PCAFC RESPITE NOTE                             dialog  X
  2    10 VA-CSP GP PCAFC RESPITE PLACEHOLDER                group   X
      Finding: *NONE*
  3    10.10 VA-CSP PCAFC RESPITE NOTE VERSION                element  X
      Finding: *NONE*
  4    10.20 VA-CSP GP PCAFC RESPITE REQUEST                  group   X
      Finding: *NONE*
  5    10.20.10 VA-CSP GP PCAFC RESPITE NON-INST SETTING     group   X
      Finding: VA-CSP PCAFC RESPITE REQ NON-INS SETTING (HEALTH
      FACTOR)
  6    10.20.10.10 VA-CSP GP PCAFC RESPITE COMMUNITY ADULT   group   X
      DAY HEALTH CARE
      Finding: VA-CSP PCAFC RESPITE REQ ADHC (HEALTH FACTOR)
  7    10.20.10.10.10 VA-CSP PCAFC RESPITE CADHC START DATE element  X
+      + Next Screen  - Prev Screen  ?? More Actions
DD  Dialog Details      DT  Dialog Text      IS  Install Selected
DF  Dialog Findings    DU  Dialog Usage     QU  Quit
DS  Dialog Summary     IA  Install All
Select Action: Next Screen// Q

```

After completing this dialog install, you will type **Q**.

You will be prompted to install the next reminder dialog component **(VA-CSP VETERAN FUNCTIONAL ASSESSMENT INSTRUMENT)**. You will choose to install all even though some components may have an X to indicate that they exist.

```

Packed reminder dialog: VA-CSP VETERAN FUNCTIONAL ASSESSMENT INSTRUMENT [NATIONA
Item  Seq. Dialog Findings                                     Type  Exists
  1    VA-CSP VETERAN FUNCTIONAL ASSESSMENT INSTRUMENT       dialog  X
  2    5 VA-CSP VETERAN FUNCTIONAL ASSESSMENT INSTRUMENT     element  X
      VERSION
      Finding: *NONE*
  3    10 VA-CSP GP VET FAI PART A                            group   X
      Finding: *NONE*
  4    10.10 VA-CSP VFAI PART A INSTRUCTIONS                   element  X
      Finding: VIEW PROGRESS NOTE TEXT (REMINDER GENERAL FINDING)
  5    PXRM GF VIEW BUTTON                                     prompt  X
  6    10.20 VA-CSP GP VET FAI PART A EATING                  group   X
      Finding: *NONE*
  7    10.20.10 VA-CSP GP VET FAI PART A EATING Q1           group   X
      Finding: *NONE*
+      + Next Screen  - Prev Screen  ?? More Actions
DD  Dialog Details      DT  Dialog Text      IS  Install Selected
DF  Dialog Findings    DU  Dialog Usage     QU  Quit
DS  Dialog Summary     IA  Install All
Select Action: Next Screen// IA

```

At the **Select Action** prompt, type **IA** to install the dialog: **VA-CSP VETERAN FUNCTIONAL ASSESSMENT INSTRUMENT**

Select Action: Next Screen// **IA Install All**

Install reminder dialog and all components with no further changes: Y// **Yes**

```

Packed reminder dialog: VA-CSP VETERAN FUNCTIONAL ASSESSMENT INSTRUMENT [NATIONA
VA-CSP VETERAN FUNCTIONAL ASSESSMENT INSTRUMENT (reminder dialog) installed from
+Item Seq. Dialog Findings Type Exists
8 10.20.10.10 VA-CSP GP VET FAI PART A EATING Q1 group X
GROUPING
Finding: *NONE*
9 10.20.10.10.10 VA-CSP VET FAI PART A EATING Q1 IND element X
Finding: VA-CSP VFAI ADL EAT IND (HEALTH FACTOR) X
10 10.20.10.10.20 VA-CSP VET FAI PART A EATING Q1 element X
SET-UP
Finding: VA-CSP VFAI ADL EAT SET-UP (HEALTH FACTOR) X
11 10.20.10.10.30 VA-CSP VET FAI PART A EATING Q1 SUP element X
Finding: VA-CSP VFAI ADL EAT SUP (HEALTH FACTOR) X
12 10.20.10.10.40 VA-CSP VET FAI PART A EATING Q1 PART element X
Finding: VA-CSP VFAI ADL EAT MOD (HEALTH FACTOR) X
13 10.20.10.10.50 VA-CSP VET FAI PART A EATING Q1 SUB element X
Finding: VA-CSP VFAI ADL EAT MAX (HEALTH FACTOR) X
14 10.20.10.10.60 VA-CSP VET FAI PART A EATING Q1 DEP element X
+ + Next Screen - Prev Screen ?? More Actions
DD Dialog Details DT Dialog Text IS Install Selected
DF Dialog Findings DU Dialog Usage QU Quit
DS Dialog Summary IA Install All
Select Action: Next Screen// Q

```

After completing this dialog install, you will type **Q**.

You will be prompted to install the next reminder dialog component **(VA-PGCSS VETERAN INTAKE)**. You will choose to install all even though some components may have an X to indicate that they exist.

```

Packed reminder dialog: VA-PGCSS VETERAN INTAKE [NATIONAL DIALOG]
+Item Seq. Dialog Findings Type Exists
1 VA-PGCSS VETERAN INTAKE dialog X
2 5 VA-PGCSS VETERAN INTAKE VERSION element X
Finding: *NONE*
3 10 VA-PGCSS DISCLAIMER element X
Finding: *NONE*
4 15 VA-PGCSS CONTACT DATE element X
Finding: *NONE*
5 20 VA-PGCSS IDENTIFIER group X
Finding: *NONE*
6 20.5 VAL-PGCSS ID FULL NAME element X
Finding: *NONE*
+ + Next Screen - Prev Screen ?? More Actions
DD Dialog Details DT Dialog Text IS Install Selected
DF Dialog Findings DU Dialog Usage QU Quit
DS Dialog Summary IA Install All
Select Action: Next Screen// IA

```

At the **Select Action** prompt, type **IA** to install the dialog: **VA-PGCSS VETERAN INTAKE**

Select Action: Next Screen// **IA Install All**

Install reminder dialog and all components with no further changes: Y// **Yes**


```

Packed reminder dialog: VA-PGCSS VETERAN INTAKE [NATIONAL DIALOG]
VA-PGCSS VETERAN INTAKE (reminder dialog) installed from exchange file.
Item  Seq.  Dialog Findings                                     Type  Exists
  1    VA-PGCSS VETERAN INTAKE                             dialog  X
  2    5 VA-PGCSS VETERAN INTAKE VERSION                     element  X
      Finding: *NONE*
  3    10 VA-PGCSS DISCLAIMER                               element  X
      Finding: *NONE*
  4    15 VA-PGCSS CONTACT DATE                             element  X
      Finding: *NONE*
  5    20 VA-PGCSS IDENTIFIER                               group    X
      Finding: *NONE*
  6    20.5 VAL-PGCSS ID FULL NAME                          element  X
      Finding: *NONE*
+      + Next Screen  - Prev Screen  ?? More Actions
DD Dialog Details      DT Dialog Text      IS Install Selected
DF Dialog Findings    DU Dialog Usage    QU Quit
DS Dialog Summary     IA Install All
Select Action: Next Screen// Q

```

After completing this dialog install, you will type **Q**.

You will be prompted to install the next reminder dialog component **(VA-CSP PROGRAM DISCHARGE)**. You will choose to install all even though some components may have an X to indicate that they exist.

```

Packed reminder dialog: VA-CSP PROGRAM DISCHARGE [NATIONAL DIALOG]
Item  Seq.  Dialog Findings                                     Type  Exists
  1    VA-CSP PROGRAM DISCHARGE                             dialog  X
  2    5 VA-CSP DISCHARGE NOTE VERSION                     element  X
      Finding: *NONE*
  3    15 VA-GP CSP DISCHARGED SERVICE                     group    X
      Finding: *NONE*
  4    15.5 VA-GP CSP DISCHARGE SERVICE COMP ASSIST         group    X
      Finding: VA-CSP DISCHARGED COMP ASSISTANCE (HEALTH FACTOR)
  5    15.5.5 VA-GP CSP DISCHARGED PERSON                  group    X
      Finding: *NONE*
  6    15.5.5.5 VA-GP CSP DISCHARGED PERSON VETERAN       group    X
      Finding: VA-CSP VETERAN DISCHARGED (HEALTH FACTOR)
  7    15.5.5.5 VA-CSP DISCHARGED PERSON VET              element  X
      Finding: *NONE*
+      + Next Screen  - Prev Screen  ?? More Actions
DD Dialog Details      DT Dialog Text      IS Install Selected
DF Dialog Findings    DU Dialog Usage    QU Quit
DS Dialog Summary     IA Install All
Select Action: Next Screen// IA

```

At the **Select Action** prompt, type **IA** to install the dialog: **VA-CSP PROGRAM DISCHARGE**

Select Action: Next Screen// **IA Install All**

Install reminder dialog and all components with no further changes: Y// **Yes**


```

Packed reminder dialog: VA-CSP PROGRAM DISCHARGE [NATIONAL DIALOG]
VA-CSP PROGRAM DISCHARGE (reminder dialog) installed from exchange file.
+-----+-----+-----+-----+-----+
| Item | Seq. | Dialog Findings | Type | Exists |
+-----+-----+-----+-----+-----+
| 1 | | VA-CSP PROGRAM DISCHARGE | dialog | X |
| 2 | 5 | VA-CSP DISCHARGE NOTE VERSION | element | X |
|   |   | Finding: *NONE* |   |   |
| 3 | 15 | VA-GP CSP DISCHARGED SERVICE | group | X |
|   |   | Finding: *NONE* |   |   |
| 4 | 15.5 | VA-GP CSP DISCHARGE SERVICE COMP ASSIST | group | X |
|   |   | Finding: VA-CSP DISCHARGED COMP ASSISTANCE (HEALTH FACTOR) |   | X |
| 5 | 15.5.5 | VA-GP CSP DISCHARGED PERSON | group | X |
|   |   | Finding: *NONE* |   |   |
| 6 | 15.5.5.5 | VA-GP CSP DISCHARGED PERSON VETERAN | group | X |
|   |   | Finding: VA-CSP VETERAN DISCHARGED (HEALTH FACTOR) |   | X |
| 7 | 15.5.5.5.5 | VA-CSP DISCHARGED PERSON VET | element | X |
|   |   | Finding: *NONE* |   |   |
+-----+-----+-----+-----+-----+
+      + Next Screen  - Prev Screen  ?? More Actions
DD Dialog Details      DT Dialog Text      IS Install Selected
DF Dialog Findings    DU Dialog Usage    QU Quit
DS Dialog Summary     IA Install All
Select Action: Next Screen// Q

```

After completing this dialog install, you will type **Q**.

You will be prompted to install the next reminder dialog component **(VA-CSP PROGRAM DENIAL)**. You will choose to install all even though some components may have an X to indicate that they exist.

```

Packed reminder dialog: VA-CSP PROGRAM DENIAL [NATIONAL DIALOG]
+-----+-----+-----+-----+-----+
| Item | Seq. | Dialog Findings | Type | Exists |
+-----+-----+-----+-----+-----+
| 1 | | VA-CSP PROGRAM DENIAL | dialog | X |
| 2 | 5 | VA-CSP DENIAL NOTE VERSION | element | X |
|   |   | Finding: *NONE* |   |   |
| 3 | 10 | VA-GP CSP DENIED SERVICE | group | X |
|   |   | Finding: *NONE* |   |   |
| 4 | 10.5 | VA-GP CSP DENIED SERVICE COMP ASSIST | group | X |
|   |   | Finding: VA-CSP DENIED COMP ASSISTANCE (HEALTH FACTOR) |   | X |
| 5 | 10.5.5 | VA-GP CSP DENIED PERSON COMP | group | X |
|   |   | Finding: *NONE* |   |   |
| 6 | 10.5.5.5 | VA-GP CSP DENIAL PERSON VETERAN | group | X |
|   |   | Finding: VA-CSP VETERAN DENIED (HEALTH FACTOR) |   | X |
| 7 | 10.5.5.5.5 | VA-CSP DENIAL PERSON VETERAN | element | X |
|   |   | Finding: *NONE* |   |   |
+-----+-----+-----+-----+-----+
+      + Next Screen  - Prev Screen  ?? More Actions
DD Dialog Details      DT Dialog Text      IS Install Selected
DF Dialog Findings    DU Dialog Usage    QU Quit
DS Dialog Summary     IA Install All
Select Action: Next Screen// IA Install All

```

At the **Select Action** prompt, type **IA** to install the dialog: **VA-CSP PROGRAM DENIAL**
Select Action: Next Screen// **IA Install All**
Install reminder dialog and all components with no further changes: Y// **Yes**

```

Packed reminder dialog: VA-CSP PROGRAM DENIAL [NATIONAL DIALOG]
VA-CSP PROGRAM DENIAL (reminder dialog) installed from exchange file.
+-----+-----+-----+-----+-----+
| Item | Seq. | Dialog Findings | Type | Exists |
+-----+-----+-----+-----+-----+
| 1 | | VA-CSP PROGRAM DENIAL | dialog | X |
| 2 | 5 | VA-CSP DENIAL NOTE VERSION | element | X |
|   |   | Finding: *NONE* |   |   |
| 3 | 10 | VA-GP CSP DENIED SERVICE | group | X |
|   |   | Finding: *NONE* |   |   |
| 4 | 10.5 | VA-GP CSP DENIED SERVICE COMP ASSIST | group | X |
|   |   | Finding: VA-CSP DENIED COMP ASSISTANCE (HEALTH FACTOR) |   | X |
| 5 | 10.5.5 | VA-GP CSP DENIED PERSON COMP | group | X |
|   |   | Finding: *NONE* |   |   |
| 6 | 10.5.5.5 | VA-GP CSP DENIAL PERSON VETERAN | group | X |
|   |   | Finding: VA-CSP VETERAN DENIED (HEALTH FACTOR) |   | X |
| 7 | 10.5.5.5.5 | VA-CSP DENIAL PERSON VETERAN | element | X |
|   |   | Finding: *NONE* |   |   |
+-----+-----+-----+-----+-----+
+      + Next Screen  - Prev Screen  ?? More Actions
DD Dialog Details      DT Dialog Text      IS Install Selected
DF Dialog Findings    DU Dialog Usage    QU Quit
DS Dialog Summary     IA Install All
Select Action: Next Screen// Q

```

After completing this dialog install, you will type **Q**.

You will be prompted to install the next reminder dialog component (**VA-CSP PROGRAM APPROVAL**). You will choose to install all even though some components may have an X to indicate that they exist.

```

Packed reminder dialog: VA-CSP PROGRAM APPROVAL [NATIONAL DIALOG]
+-----+-----+-----+-----+-----+
| Item | Seq. | Dialog Findings | Type | Exists |
+-----+-----+-----+-----+-----+
| 1 | | VA-CSP PROGRAM APPROVAL | dialog | X |
| 2 | 5 | VA-CSP APPROVAL NOTE VERSION | element | X |
|   |   | Finding: *NONE* |   |   |
| 3 | 10 | VA-GP CSP APPROVED SERVICE | group | X |
|   |   | Finding: *NONE* |   |   |
| 4 | 10.5 | VA-CSP APPROVED SERVICE COMP ASSIST | group | X |
|   |   | Finding: VA-CSP APPROVED COMP ASSISTANCE (HEALTH FACTOR) |   | X |
| 5 | 10.5.5 | VA-GP CSP APPROVED PERSON COMP | group | X |
|   |   | Finding: *NONE* |   |   |
| 6 | 10.5.5.5 | VA-GP CSP APPROVED PERSON VETERAN PCAFC | group |   |
|   |   | Finding: VA-CSP VETERAN APPROVED (HEALTH FACTOR) |   | X |
| 7 | 10.5.5.5.5 | VA-CSP APPROVED PERSON VETERAN | element | X |
|   |   | Finding: *NONE* |   |   |
+-----+-----+-----+-----+-----+
+      + Next Screen  - Prev Screen  ?? More Actions
DD Dialog Details      DT Dialog Text      IS Install Selected
DF Dialog Findings    DU Dialog Usage    QU Quit
DS Dialog Summary     IA Install All
Select Action: Next Screen// IA

```

At the **Select Action** prompt, type **IA** to install the dialog: **VA-CSP PROGRAM APPROVAL**

Select Action: Next Screen// **IA Install All**

Install reminder dialog and all components with no further changes: Y// **Yes**

```

Packed reminder dialog: VA-CSP PROGRAM APPROVAL [NATIONAL DIALOG]
VA-CSP PROGRAM APPROVAL (reminder dialog) installed from exchange file.
+-----+-----+-----+-----+
| Item | Seq. | Dialog Findings | Type | Exists |
+-----+-----+-----+-----+
| 1 | | VA-CSP PROGRAM APPROVAL | dialog | X |
| 2 | 5 | VA-CSP APPROVAL NOTE VERSION | element | X |
|   |   | Finding: *NONE* |   |   |
| 3 | 10 | VA-GP CSP APPROVED SERVICE | group | X |
|   |   | Finding: *NONE* |   |   |
| 4 | 10.5 | VA-CSP APPROVED SERVICE COMP ASSIST | group | X |
|   |   | Finding: VA-CSP APPROVED COMP ASSISTANCE (HEALTH FACTOR) |   | X |
| 5 | 10.5.5 | VA-GP CSP APPROVED PERSON COMP | group | X |
|   |   | Finding: *NONE* |   |   |
| 6 | 10.5.5.5 | VA-GP CSP APPROVED PERSON VETERAN PCAFC | group | X |
|   |   | Finding: VA-CSP VETERAN APPROVED (HEALTH FACTOR) |   | X |
| 7 | 10.5.5.5.5 | VA-CSP APPROVED PERSON VETERAN | element | X |
|   |   | Finding: *NONE* |   |   |
+-----+-----+-----+-----+
+      + Next Screen  - Prev Screen  ?? More Actions
DD  Dialog Details      DT  Dialog Text      IS  Install Selected
DF  Dialog Findings    DU  Dialog Usage     QU  Quit
DS  Dialog Summary     IA  Install All
Select Action: Next Screen// Q

```

After completing this dialog install, you will type **Q**.

```

Description:
The following Clinical Reminder items were selected for packing:
REMINDER DIALOG
  VA-CSP PROGRAM APPROVAL
  VA-CSP PROGRAM DENIAL
  VA-CSP PROGRAM DISCHARGE
  VA-PGCSS VETERAN INTAKE
  VA-CSP VETERAN FUNCTIONAL ASSESSMENT INSTRUMENT
  VA-CSP PCAFC RESPITE NOTE
REMINDER TERM
  VA-REMINDER UPDATE_2_0_418
+-----+-----+-----+-----+
+      + Next Screen  - Prev Screen  ?? More Actions  >>>
IA  Install all Components      IS  Install Selected Component
Select Action: Next Screen// Q

```

You will then be returned to this screen. At the **Select Action** prompt, type **Q**.

Install complete.

Post Installation

Note: This is an update to existing national dialogs, so steps 1-3 likely have already been completed for all dialogs, except the new VA-CSP PCAFC RESPITE NOTE. Confirm the other note titles below are active and linked to the appropriate Reminder Dialogs.

- 1. Make the Dialog template available to be attached to a Personal or Shared template or to be able to attach the dialog to a progress note title.**

Select Reminder Managers Menu <TEST ACCOUNT> Option: **CP CPRS**

Reminder Configuration

CA	Add/Edit Reminder Categories
CL	CPRS Lookup Categories
CS	CPRS Cover Sheet Reminder List
MH	Mental Health Dialogs Active
PN	Progress Note Headers
RA	Reminder GUI Resolution Active
TIU	TIU Template Reminder Dialog Parameter
DEVL	Evaluate Coversheet List on Dialog Finish
DL	Default Outside Location
PT	Position Reminder Text at Cursor
LINK	Link Reminder Dialog to Template
TEST	CPRS Coversheet Time Test
NP	New Reminder Parameters
GEC	GEC Status Check Active
WH	WH Print Now Active

Select CPRS Reminder Configuration <TEST ACCOUNT> Option: **TIU TIU**

Template Reminder Dialog Parameter

Reminder Dialogs allowed as Templates may be set for the following:

1	User	USR	[choose from NEW PERSON]
3	Service	SRV	[choose from SERVICE/SECTION]
4	Division	DIV	[SALT LAKE CITY]
5	System	SYS	[NATREM.FO-SLC.MED.VA.GOV]

Enter selection: **5** *Choose the appropriate number for your site. Your site may do this by System or other levels. The example below uses SYSTEM level.*

Setting Reminder Dialogs allowed as Templates for System: NATREM.FO-SLC.MED.VA.GOV

Select Display Sequence: **?**

149	VA-COVID-19 TELEPHONE FOLLOW-UP
160	VA-SRA-CONSULT RESPONSE (D)

When you type a question mark above, you will see the list of #'s (with dialogs) that are already taken. Choose a number NOT on this list. For this example, 150 is not present so I will use 150.

Select Display Sequence: **150**
Are you adding 150 as a new Display Sequence? Yes// **Y YES**
Display Sequence: 150// **<Enter>**
Clinical Reminder Dialog: **VA-CSP PROGRAM DISCHARGE** then **<enter>**
OK? Yes// **<Enter>**

Select Display Sequence: **151**
Are you adding 151 as a new Display Sequence? Yes// **Y YES**
Display Sequence: 151// **<Enter>**
Clinical Reminder Dialog: **VA-CSP PROGRAM APPROVAL** then **<enter>**
OK? Yes// **<Enter>**

Select Display Sequence: **152**
Are you adding 152 as a new Display Sequence? Yes// **Y YES**
Display Sequence: 152// **<Enter>**
Clinical Reminder Dialog: **VA-CSP PROGRAM DENIAL** then **<enter>**
OK? Yes// **<Enter>**

Select Display Sequence: **153**
Are you adding 152 as a new Display Sequence? Yes// **Y YES**
Display Sequence: 152// **<Enter>**
Clinical Reminder Dialog: **VA-PGCSS VETERAN INTAKE** then **<enter>**
OK? Yes// **<Enter>** (Yes)

Select Display Sequence: **154**
Are you adding 154 as a new Display Sequence? Yes// **Y YES**
Display Sequence: 154// **<Enter>**
Clinical Reminder Dialog: **VA-CSP VETERAN FUNCTIONAL ASSESSMENT INSTRUMENT** then **<enter>**
OK? Yes// **<Enter>**

Select Display Sequence: **155**
Are you adding 155 as a new Display Sequence? Yes// **Y YES**
Display Sequence: 155// **<Enter>**
Clinical Reminder Dialog: **VA-CSP PCAFC RESPITE NOTE**
then **<enter>**
OK? Yes// **<Enter>**

2. Add appropriate TIU objects for patient address and phone number to the VAL-CSP PCAFC VETERAN NAME/SSN dialog element.

NAME: **VAL-CSP PCAFC VETERAN NAME/SSN**
DISABLE:
CLASS: LOCAL//
SPONSOR:
REVIEW DATE:

RESOLUTION TYPE:
ORDERABLE ITEM:
FINDING ITEM:

Additional findings: none
Select ADDITIONAL FINDING:
DIALOG/PROGRESS NOTE TEXT:

Veteran address: NEED OBJECT\\
Veteran phone #: NEED OBJECT\\
Edit? NO// **YES**

==[WRAP]==[INSERT]===== < DIALOG/PROGRESS NOTE TE[Press <PF1>H for help]=====

Veteran address: **NEED OBJECT**
Veteran phone #: **NEED OBJECT**

Replace the red text with appropriate TIU object.

3. Setup of Note Titles.

The note titles to create to associate with this template are:

CSP APPROVAL NOTE
CSP DENIAL NOTE
CSP DISCHARGE/REVOICATION NOTE
CSP PGCSS VETERAN INTAKE
CSP PCAFC VETERAN FUNCTIONAL ASSESSMENT INSTRUMENT CONSULT
CSP PCAFC RESPITE NOTE

VHA Enterprise Standard Title: **CAREGIVER CERTIFICATE**

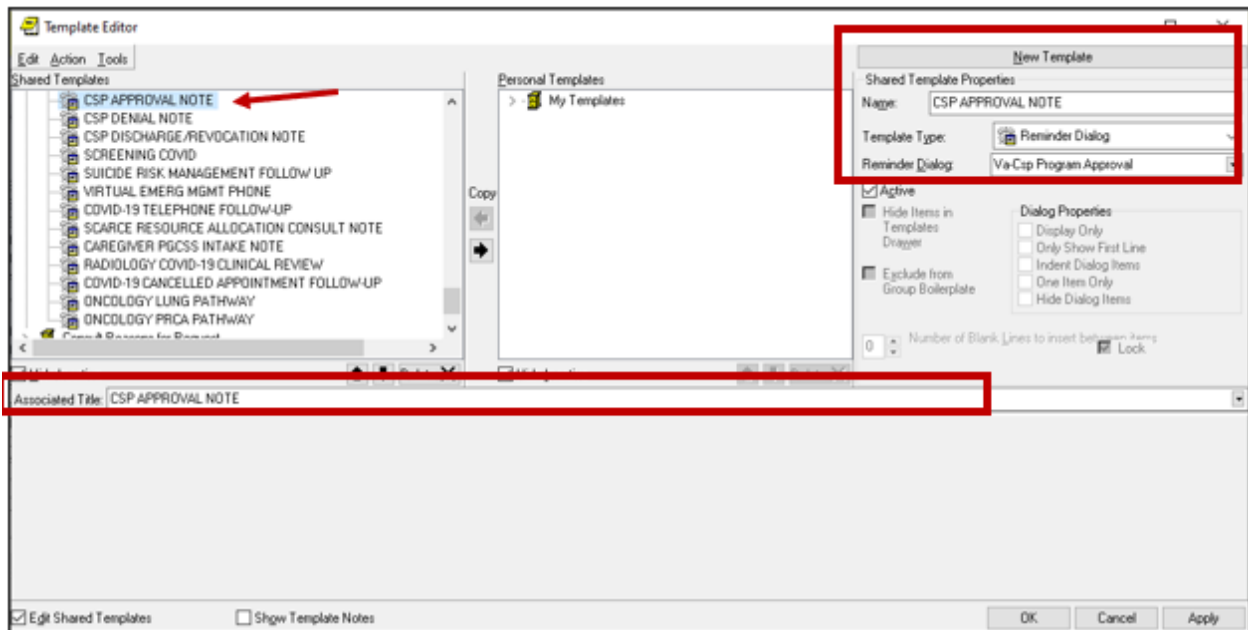
You can add these to your document class where caregiver notes are located.

Note: Comprehensive information on Creating new Document Classes and Titles can be found beginning on page 54 of the TIU/ASU Implementation Guide at the following link: [http://www.va.gov/vdl/documents/Clinical/CPRS-Text Integration Utility \(TIU\)/tiuim.pdf](http://www.va.gov/vdl/documents/Clinical/CPRS-Text%20Integration%20Utility%20(TIU)/tiuim.pdf)

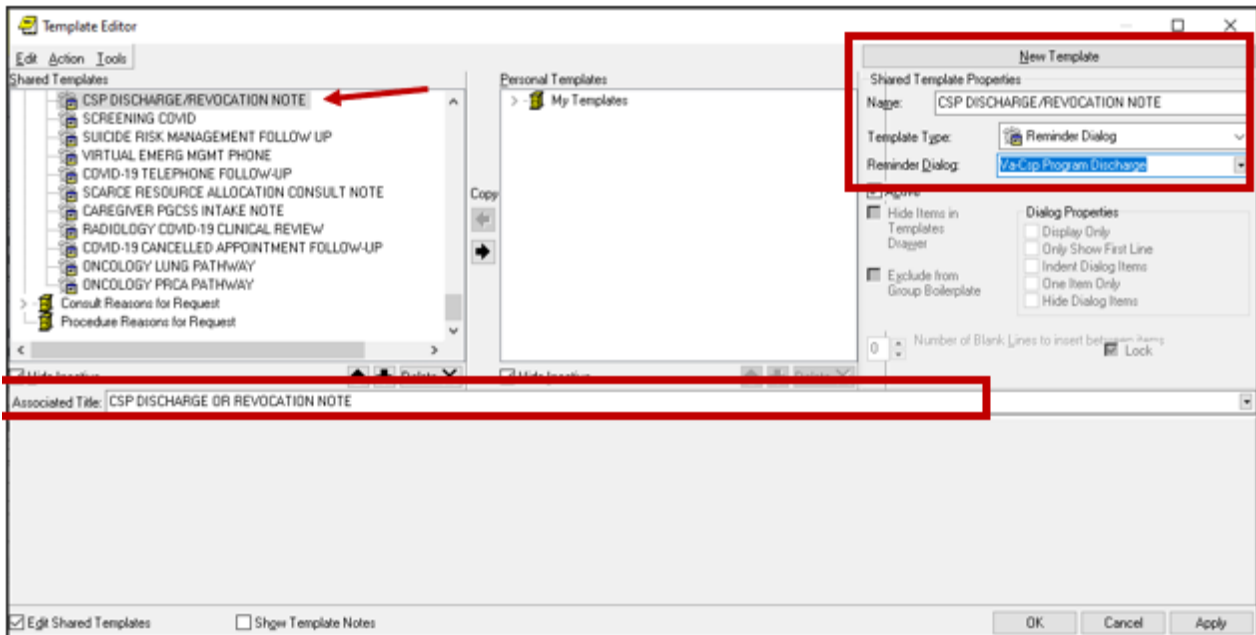
4. Associate the reminder dialogs with the note title in CPRS

- a. Type in the following information:
Name: **CSP APPROVAL NOTE**
Template Type: **Reminder Dialog**
Reminder Dialog: **VA-CSP PROGRAM APPROVAL**

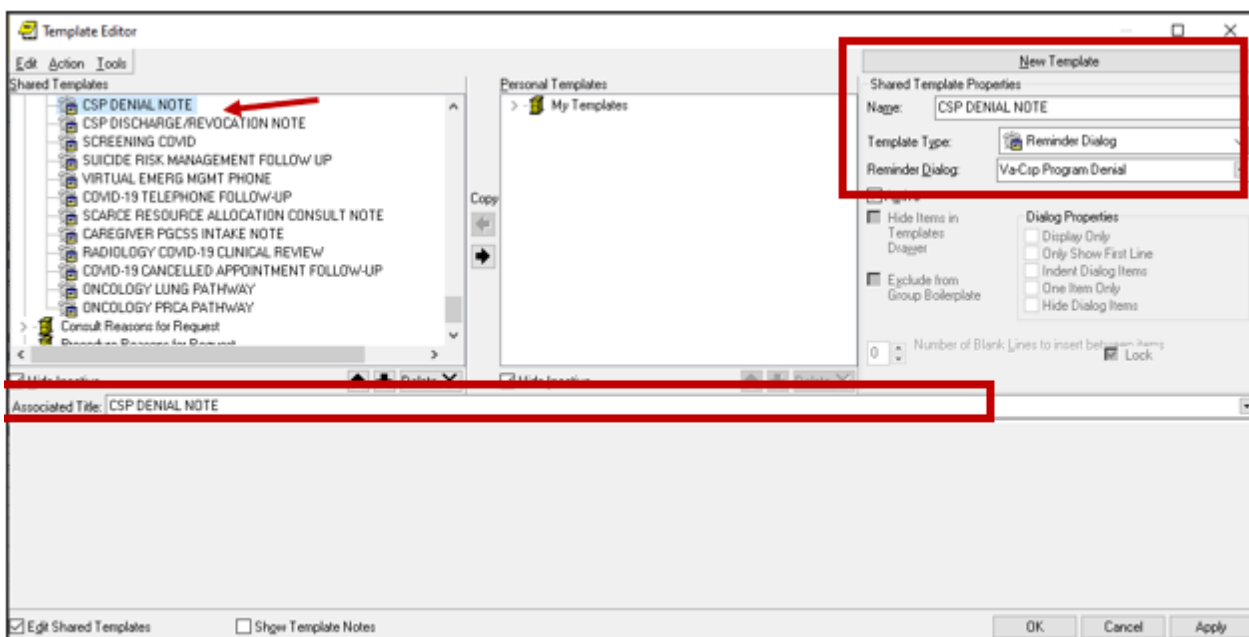
Next, type in the Associated Title, which in this case is **CSP APPROVAL NOTE** and hit Apply.



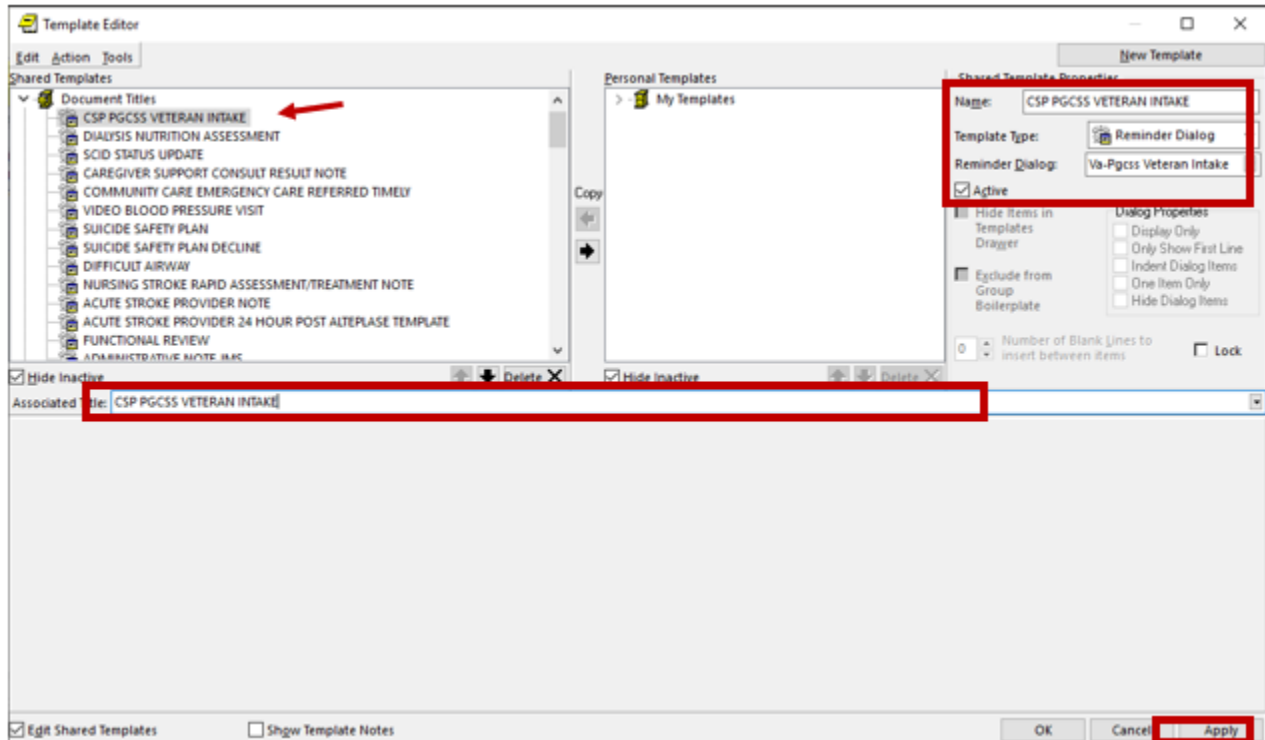
- b. Name: **CSP DISCHARGE/REVOCAION NOTE**
Template Type: **Reminder Dialog**
Reminder Dialog: **VA-CSP PROGRAM DISCHARGE**
Associated Title: **CSP DISCHARGE/REVOCAION NOTE**



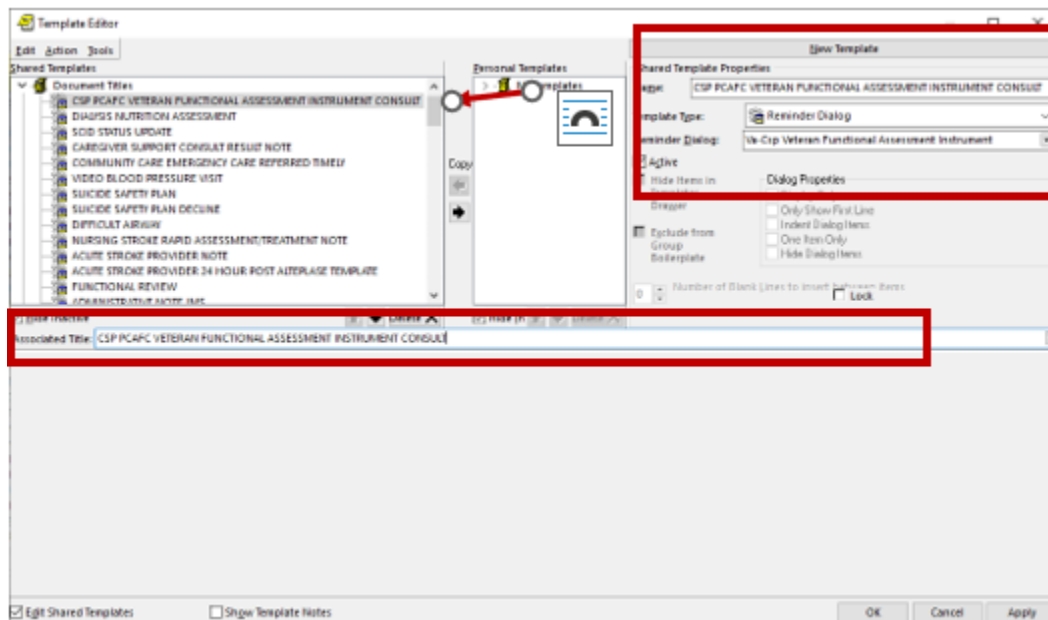
- c. Name: **CSP DENIAL NOTE**
Template Type: **Reminder Dialog**
Reminder Dialog: **VA-CSP PROGRAM DENIAL**
Associated Title: **CSP DENIAL NOTE**



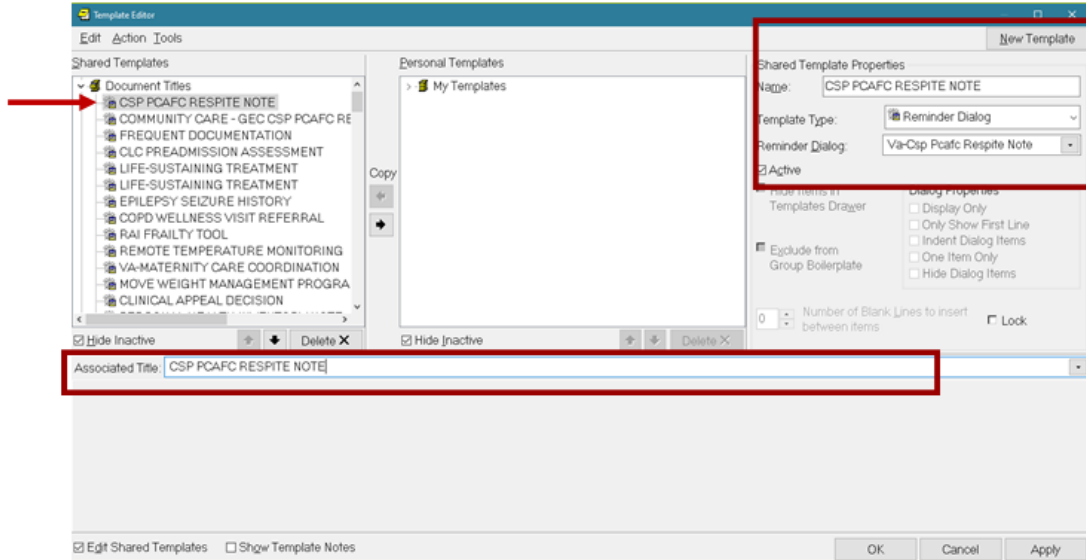
- d. Name: **CSP PGCSS VETERAN INTAKE**
Template Type: **Reminder Dialog**
Reminder Dialog: **VA-PGCSS VETERAN INTAKE**
Associated Title: **CSP PGCSS VETERAN INTAKE**



- e. Name: **CSP PCAFC VETERAN FUNCTIONAL ASSESSMENT INSTRUMENT CONSULT**
Template Type: **Reminder Dialog**
Reminder Dialog: **VA-CSP VETERAN FUNCTIONAL ASSESSMENT INSTRUMENT**
Associated Title: **CSP PCAFC VETERAN FUNCTIONAL ASSESSMENT INSTRUMENT CONSULT**



- f. Name: **CSP PCAFC RESPITE NOTE**
Template Type: **Reminder Dialog**
Reminder Dialog: **VA-CSP PCAFC RESPITE NOTE**
Associated Title: **CSP PCAFC RESPITE NOTE**



- 5. **Complete the Community Care – GEC CSP PCAFC Respite Consult creation guide. It is located in the same folder as this installation guide: Update 418 location inside the VA is redacted.**