



Update _2_0_421

Clinical Reminders

**VA-ONCOLOGY HEAD AND NECK CANCER
PATHWAYS**

Install Guide

March 2024

Product Development
Office of Information Technology
Department of Veterans Affairs

Table of Contents

INTRODUCTION	1
PRE-INSTALLATION	14
INSTALL DETAILS	14
INSTALL EXAMPLE	14
POST INSTALLATION	23

Introduction

This update is for Head and Neck Cancer Clinical Pathways. Clinical pathways standardize evidence-based practices to ensure high quality, cost-effective care for patients at each point in their care plan. The Head and Neck Cancer Clinical Pathways templates will be used to document treatment decisions related to head and neck cancer. These templates were developed by the National Oncology Program Office in collaboration with an interdisciplinary team of subject matter experts, with the support of national program offices such as medical oncology, radiation oncology, surgery, pathology, and pharmacy.

The purpose of these templates is to collect data on clinical pathways utilization and will facilitate continuous process improvement efforts, which may result in a change to provider practice, local processes, or a change to the clinical pathway recommendations. Recommendations are based upon national guidelines, published literature, and institutional experience with efficacy, toxicity and cost.

VHA Directive 1415 requires that all sites use the National Oncology templates. If your site does not provide oncology services, the site must request a waiver to exempt it from the requirement to use the National Oncology templates. The waiver can be requested by emailing **REDACTED**.

For more information regarding the National Oncology Program:

REDACTED

There are 6 new templates, each containing multiple pathways. They will be in shared templates and linked to note titles.

Any person on the care team can complete the templates (medical oncologist, radiation oncologist, surgeon).

The reminder exchange file includes the following reminder dialog templates:

1. VA-ONCOLOGY HEAD NECK ORAL CAVITY PATHWAYS
2. VA-ONCOLOGY HEAD NECK ORO/HYPO/NASOPHARYNX PATHWAYS
3. VA-ONCOLOGY HEAD NECK LAR SUPRAGLOT/GLOTTIS/SUBGLOTTIS PATHWAYS
4. VA-ONCOLOGY HEAD NECK LOCAL/REGIONAL RECURRENT DISEASE PATHWAYS
5. VA-ONCOLOGY HEAD NECK METASTATIC OR RECURRENT DISEASE PATHWAYS
6. VA-ONCOLOGY HEAD NECK UNKNOWN PRIMARY PATHWAYS

UPDATE_2_0_421 contains 1 Reminder Exchange entry:

UPDATE_2_0_421 VA-ONCOLOGY HEAD AND NECK CANCER PATHWAYS

The exchange file contains the following components:

REMINDER GENERAL FINDINGS
VIEW PROGRESS NOTE TEXT

TIU TEMPLATE FIELDS

VA-ONC NPOP SHAREPOINT
VA-ONC OFF REASON TXT
VA-ONC TREATMENT REASON
VA-ONC CLINICAL TRIAL
VA-ONC PRESUMPTIVE CONDITIONS
VA-ONC PATHWAYS SHAREPOINT

HEALTH FACTORS

VA-REMINDER UPDATES [C]
VA-UPDATE_2_0_421
VA-ONC HN UNKNOWN PRIMARY CLINICAL PATHWAY [C]
VA-ONC HN UNK PRIM SURG CONSULT FOR TONSILLECTOMY
VA-ONC HN UNK PRIM ENT FOR LARYNG/DIRECT BX
VA-ONC HN UNK PRIM HPV, EBV, PET/CT ORDERED
VA-ONC HN UNK PRIM PST LARYN N PRIM N2-3 OPA RSN
VA-ONC HN UNK PRIM PST LARYN N PRIM N2-3 OPA TX
VA-ONC HN UNK PRIM PST LARYN N PRIM N2-3 RAD/CPA
VA-ONC HN UNK PRIM PST LARYN N PRIM N2-3 RAD/CFL
VA-ONC HN UNK PRIM PST LARYN N PRIM N2-3 RAD/CIS
VA-ONC HN UNK PRIM PST LARYN N PRIM N2-3 CL TR
VA-ONC HN UNK PRIM PST LARYN N PRIM N1 OPA RSN
VA-ONC HN UNK PRIM PST LARYN N PRIM N1 OPA TX
VA-ONC HN UNK PRIM PST LARYN N PRIM N1 CL TR
VA-ONC HN UNK PRIM PST LARYN N PRIM N1 RADIATION
VA-ONC HN UNK PRIM PST LARYN N PRIM N1 NECK DISSECT
VA-ONC HN NPHAR T3-4, N0-3, M0 CLINICAL PATHWAY [C]
VA-ONC HN NPHAR T3-4,N0-3,M0 PERF NOT ADEQ OPA RSN
VA-ONC HN NPHAR T3-4,N0-3,M0 PERF NOT ADEQ OPA TX
VA-ONC HN NPHAR T3-4,N0-3,M0 PERF NOT ADEQ RAD/CARBO-PAC
VA-ONC HN NPHAR T3-4,N0-3,M0 PERF NOT ADEQ RAD/CARBO-FLU
VA-ONC HN NPHAR T3-4,N0-3,M0 PERF NOT ADEQ RAD/CIS
VA-ONC HN NPHAR T3-4,N0-3,M0 PERF NOT ADEQ CL TR
VA-ONC HN NPHAR T3-4,N0-3,M0 ADPER-EBV DIS CARBO-PACLITAXEL/RAD
VA-ONC HN NPHAR T3-4,N0-3,M0 ADPER-EBV DIS CARBO-FLUORO/RAD
VA-ONC HN NPHAR T3-4,N0-3,M0 ADPER-EBV DIS OPA RSN
VA-ONC HN NPHAR T3-4,N0-3,M0 ADPER-EBV DIS OPA TX
VA-ONC HN NPHAR T3-4,N0-3,M0 ADPER-EBV DIS CL TR
VA-ONC HN NPHAR T3-4,N0-3,M0 ADPER-EBV DIS DOCETAXEL/CIS-FLU
VA-ONC HN NPHAR T3-4,N0-3,M0 ADPER+EBV DIS OPA RSN
VA-ONC HN NPHAR T3-4,N0-3,M0 ADPER+EBV DIS OPA TX
VA-ONC HN NPHAR T3-4,N0-3,M0 ADPER+EBV DIS CIS/GEMCITABINE
VA-ONC HN NPHAR T3-4,N0-3,M0 ADPER+EBV DIS CL TR
VA-ONCOLOGY PATHWAYS [C]
VA-ONC HN NPHAR T3-4, N0-3, M0 CLINICAL PATHWAY
VA-ONC HN NPHAR T0-1,N1,M0;T2,N0,M0&T2,N1,M0 CLINICAL PATH [C]

VA-ONC HN NPHAR T0-1,N1,M0;T2,N0,M0&T2,N1,M0 PTEST HR N OPA RSN
 VA-ONC HN NPHAR T0-1,N1,M0;T2,N0,M0&T2,N1,M0 PTEST HR N OPA TX
 VA-ONC HN NPHAR T0-1,N1,M0;T2,N0,M0&T2,N1,M0 PTEST HR N RAD
 VA-ONC HN NPHAR T0-1,N1,M0;T2,N0,M0&T2,N1,M0 PTEST HR N CL TR
 VA-ONC HN NPHAR T0-1,N1,M0;T2,N0,M0&T2,N1,M0 PTEST HR Y OPA RSN
 VA-ONC HN NPHAR T0-1,N1,M0;T2,N0,M0&T2,N1,M0 PTEST HR Y OPA TX
 VA-ONC HN NPHAR T0-1,N1,M0;T2,N0,M0&T2,N1,M0 PTEST HR Y RAD/CPA
 VA-ONC HN NPHAR T0-1,N1,M0;T2,N0,M0&T2,N1,M0 PTEST HR Y RAD/CFL
 VA-ONC HN NPHAR T0-1,N1,M0;T2,N0,M0&T2,N1,M0 PTEST HR Y RAD/CIS
 VA-ONC HN NPHAR T0-1,N1,M0;T2,N0,M0&T2,N1,M0 PTEST HR Y CL TR
 VA-ONC HN NPHAR T0-1,N1,M0;T2,N0,M0&T2,N1,M0 CLINICAL PATHWAY
 VA-ONC HN NPHAR T1, N0, M0 CLINICAL PATHWAY [C]
 VA-ONC HN NPHAR T1, N0, M0 POST TEST OPA RSN
 VA-ONC HN NPHAR T1, N0, M0 POST TEST OPA TX
 VA-ONC HN NPHAR T1, N0, M0 POST TEST CL TR
 VA-ONC HN NPHAR T1, N0, M0 POST TEST RADIATION
 VA-ONC HN NPHAR T1, N0, M0 CLINICAL PATHWAY
 VA-ONC HN UNK PRIM PST LARYN Y PRIM EBV POS
 VA-ONC HN OPHAR HPV+/-T1-2,N0,M0 CLINICAL PATHWAY [C]
 VA-ONC HN OPHAR HPV+/-T1-2,N0,M0 RADIATION
 VA-ONC HN OPHAR HPV+/-T1-2,N0,M0 OPA RSN
 VA-ONC HN OPHAR HPV+/-T1-2,N0,M0 OPA TX
 VA-ONC HN OPHAR HPV+/-T1-2,N0,M0 SURGICAL RESECTION
 VA-ONC HN OPHAR HPV+/-T1-2,N0,M0 CL TR
 VA-ONC HN OPHAR HPV+/-T1-2,N0,M0 PSRG NO ADFE OPA RSN
 VA-ONC HN OPHAR HPV+/-T1-2,N0,M0 PSRG NO ADFE OPA TX
 VA-ONC HN OPHAR HPV+/-T1-2,N0,M0 PSRG NO ADFE CL TR
 VA-ONC HN OPHAR HPV+/-T1-2,N0,M0 PSRG NO ADFE SURVEILLANCE
 VA-ONC HN OPHAR HPV+/-T1-2,N0,M0 PSRG ADFE Y EXNO+MRG N OPA RSN
 VA-ONC HN OPHAR HPV+/-T1-2,N0,M0 PSRG ADFE Y EXNO+MRG N OPA TX
 VA-ONC HN OPHAR HPV+/-T1-2,N0,M0 PSRG ADFE Y EXNO+MRG N CL TR
 VA-ONC HN OPHAR HPV+/-T1-2,N0,M0 PSRG ADFE Y EXNO+MRG N RAD
 VA-ONC HN OPHAR HPV+/-T1-2,N0,M0 PSRG ADFE EXNO+MRG Y OPA RSN
 VA-ONC HN OPHAR HPV+/-T1-2,N0,M0 PSRG ADFE EXNO+MRG Y OPA TX
 VA-ONC HN OPHAR HPV+/-T1-2,N0,M0 PSRG ADFE EXNO+MRG Y RAD/CPA
 VA-ONC HN OPHAR HPV+/-T1-2,N0,M0 PSRG ADFE EXNO+MRG Y RAD/CFL
 VA-ONC HN OPHAR HPV+/-T1-2,N0,M0 PSRG ADFE EXNO+MRG Y RAD/CIS
 VA-ONC HN OPHAR HPV+/-T1-2,N0,M0 PSRG ADFE EXNO+MRG Y CL TR
 VA-ONC HN OPHAR HPV+/-T1-2,N0,M0 CLINICAL PATHWAY
 VA-ONC HN OPHAR HPV+/-T1-2,N2-3&T3-4,N0-3 CLINICAL PATHWAY [C]
 VA-ONC HN OPHAR HPV+/-T1-2,N2-3&T3-4,N0-3 CYT/CET CAN N OPA RSN
 VA-ONC HN OPHAR HPV+/-T1-2,N2-3&T3-4,N0-3 CYT CAN N CET N OPA TX
 VA-ONC HN OPHAR HPV+/-T1-2,N2-3&T3-4,N0-3 CYT/CET CAN N CL TR
 VA-ONC HN OPHAR HPV+/-T1-2,N2-3&T3-4,N0-3 CYT/CET CAN N RAD
 VA-ONC HN OPHAR HPV+/-T1-2,N2-3&T3-4,N0-3 CYT CAN N CET Y R/CET
 VA-ONC HN OPHAR HPV+/-T1-2,N2-3&T3-4,N0-3 CYT CAN N CET Y OP RSN
 VA-ONC HN OPHAR HPV+/-T1-2,N2-3&T3-4,N0-3 CYT CAN N CET Y OPA TX
 VA-ONC HN OPHAR HPV+/-T1-2,N2-3&T3-4,N0-3 CYT CAN N CET Y CL TR
 VA-ONC HN OPHAR HPV+/-T1-2,N2-3&T3-4,N0-3 CYT CAN Y OPA RSN
 VA-ONC HN OPHAR HPV+/-T1-2,N2-3&T3-4,N0-3 CYT CAN Y OPA TX
 VA-ONC HN OPHAR HPV+/-T1-2,N2-3&T3-4,N0-3 CYT CAN Y RAD/CPA

VA-ONC HN OPHAR HPV+/-T1-2,N2-3&T3-4,N0-3 CYT CAN Y RAD/CFL
VA-ONC HN OPHAR HPV+/-T1-2,N2-3&T3-4,N0-3 CYT CAN Y RAD/CIS
VA-ONC HN OPHAR HPV+/-T1-2,N2-3&T3-4,N0-3 CYT CAN Y CL TR
VA-ONC HN OPHAR HPV+/-T1-2,N2-3&T3-4,N0-3 CLINICAL PATHWAY
VA-ONC HN OPHAR HPV+/-T1-2,N1 CLINICAL PATHWAY [C]
VA-ONC HN OPHAR HPV+/-T1-2,N1 PSRG NO ADFE SURVEILLANCE
VA-ONC HN OPHAR HPV+/-T1-2,N1 PSRG NO ADFE CL TR
VA-ONC HN OPHAR HPV+/-T1-2,N1 PSRG NO ADFE OPA RSN
VA-ONC HN OPHAR HPV+/-T1-2,N1 PSRG NO ADFE OPA TX
VA-ONC HN OPHAR HPV+/-T1-2,N1 PSRG Y ADFE EXNO+MRG N CL TR
VA-ONC HN OPHAR HPV+/-T1-2,N1 PSRG Y ADFE EXNO+MRG N OPA RSN
VA-ONC HN OPHAR HPV+/-T1-2,N1 PSRG Y ADFE EXNO+MRG N OPA TX
VA-ONC HN OPHAR HPV+/-T1-2,N1 PSRG Y ADFE EXNO+MRG N RAD
VA-ONC HN OPHAR HPV+/-T1-2,N1 PSRG Y ADFE EXNO+MRG Y OPA RSN
VA-ONC HN OPHAR HPV+/-T1-2,N1 PSRG Y ADFE EXNO+MRG Y OPA TX
VA-ONC HN OPHAR HPV+/-T1-2,N1 PSRG Y ADFE EXNO+MRG Y RAD/CPA
VA-ONC HN OPHAR HPV+/-T1-2,N1 PSRG Y ADFE EXNO+MRG Y RAD/CFL
VA-ONC HN OPHAR HPV+/-T1-2,N1 PSRG Y ADFE EXNO+MRG Y RAD/CIS
VA-ONC HN OPHAR HPV+/-T1-2,N1 PSRG Y ADFE EXNO+MRG Y CL TR
VA-ONC HN OPHAR HPV+/-T1-2,N1 NO NODES/OR 1<3CM OPA RSN
VA-ONC HN OPHAR HPV+/-T1-2,N1 NO NODES/OR 1<3CM OPA TX
VA-ONC HN OPHAR HPV+/-T1-2,N1 NO NODES/OR 1<3CM CL TR
VA-ONC HN OPHAR HPV+/-T1-2,N1 NO NODES/OR 1<3CM RAD
VA-ONC HN OPHAR HPV+/-T1-2,N1 MULT NODES/OR 1>=3CM RAD/CET
VA-ONC HN OPHAR HPV+/-T1-2,N1 MULT NODES/OR 1>=3CM RAD/CPA
VA-ONC HN OPHAR HPV+/-T1-2,N1 MULT NODES/OR 1>=3CM RAD/CFL
VA-ONC HN OPHAR HPV+/-T1-2,N1 MULT NODES/OR 1>=3CM OPA RSN
VA-ONC HN OPHAR HPV+/-T1-2,N1 MULT NODES/OR 1>=3CM OPA TX
VA-ONC HN OPHAR HPV+/-T1-2,N1 MULT NODES/OR 1>=3CM CL TR
VA-ONC HN OPHAR HPV+/-T1-2,N1 MULT NODES/OR 1>=3CM RAD/CIS
VA-ONC HN OPHAR HPV+/-T1-2,N1 ELIG SURG RESECT OPA RSN
VA-ONC HN OPHAR HPV+/-T1-2,N1 ELIG SURG RESECT OPA TX
VA-ONC HN OPHAR HPV+/-T1-2,N1 ELIG SURG RESECT CL TR
VA-ONC HN OPHAR HPV+/-T1-2,N1 SURG RESECT
VA-ONC HN OPHAR HPV+/-T1-2,N1 CLINICAL PATHWAY
VA-ONC HN UNK PRIM PST LARYN Y PRIM HPV POS
VA-ONC HN UNK PRIM PST NECK DISS/- EXNO N2-3 CL TR
VA-ONC HN UNK PRIM PST NECK DISS/- EXNO N2-3 OPA RSN
VA-ONC HN UNK PRIM PST NECK DISS/- EXNO N2-3 OPA TX
VA-ONC HN UNK PRIM PST NECK DISS/- EXNO N2-3 RADIATION
VA-ONC HN UNK PRIM PST NECK DISS/- EXNO N1 OPA RSN
VA-ONC HN UNK PRIM PST NECK DISS/- EXNO N1 OPA TX
VA-ONC HN UNK PRIM PST NECK DISS/- EXNO N1 SURV
VA-ONC HN UNK PRIM PST NECK DISS/- EXNO N1 CL TR
VA-ONC HN UNK PRIM PST NECK DISS/+ EXNO OPA RSN
VA-ONC HN UNK PRIM PST NECK DISS/+ EXNO OPA TX
VA-ONC HN UNK PRIM PST NECK DISS/+ EXNO RAD/CPA
VA-ONC HN UNK PRIM PST NECK DISS/+ EXNO RAD/CFL
VA-ONC HN UNK PRIM PST NECK DISS/+ EXNO RAD/CIS
VA-ONC HN UNK PRIM PST NECK DISS/+ EXNO CL TR
VA-ONC HN UNKNOWN PRIMARY CLINICAL PATHWAY

VA-ONC HN METASTATIC OR RECUR CLINICAL PATHWAY [C]
 VA-ONC HN METASTATIC OR RECUR SYST + PD-L1 OPA RSN
 VA-ONC HN METASTATIC OR RECUR SYST + PD-L1 FUT ORDER
 VA-ONC HN METASTATIC OR RECUR SYST + PD-L1 PREV ORDERED
 VA-ONC HN META/RECUR CPS<1 POST IMM/CHEM + DIS PROG CETUXIMAB
 VA-ONC HN META/RECUR CPS<1 POST IMM/CHEM - DIS PROG OPA RSN
 VA-ONC HN META/RECUR CPS<1 POST IMM/CHEM + DIS PROG OPA RSN
 VA-ONC HN META OR RECUR N SYSTEMIC THERAPY OPA RSN
 VA-ONC HN META OR RECUR CPS<1 Y SYST OPA RSN
 VA-ONC HN META/RECUR CPS>=1 Y SYST - PLAT OPA RSN
 VA-ONC HN META/RECUR CPS>=1 Y SYST + PLAT/- IMM OPA RSN
 VA-ONC HN META/RECUR CPS>=1 Y SYST + PLAT/IMM OPA RSN
 VA-ONC HN META/RECUR CPS<1 POST IMM/CHEM - DIS PROG OPA TX
 VA-ONC HN META/RECUR CPS<1 POST IMM/CHEM - DIS PROG SURV
 VA-ONC HN META/RECUR CPS<1 POST IMM/CHEM - DIS PROG CL TR
 VA-ONC HN META/RECUR CPS<1 POST IMM/CHEM + DIS PROG OPA TX
 VA-ONC HN META/RECUR CPS<1 POST IMM/CHEM + DIS PROG DOCETAXEL
 VA-ONC HN META/RECUR CPS<1 POST IMM/CHEM + DIS PROG CL TR
 VA-ONC HN META OR RECUR N SYSTEMIC THERAPY OPA TX
 VA-ONC HN META OR RECUR N SYSTEMIC THERAPY PALLIATIVE CARE
 VA-ONC HN META OR RECUR N SYSTEMIC THERAPY CL TR
 VA-ONC HN META OR RECUR CPS<1 Y SYST OPA TX
 VA-ONC HN META OR RECUR CPS<1 Y SYST PEMBRO/PLAT/FLU
 VA-ONC HN META OR RECUR CPS<1 Y SYST CL TR
 VA-ONC HN META/RECUR CPS>=1 Y SYST - PLAT OPA TX
 VA-ONC HN META/RECUR CPS>=1 Y SYST - PLAT PEMBROLIZUMAB
 VA-ONC HN META/RECUR CPS>=1 Y SYST - PLAT CL TR
 VA-ONC HN META/RECUR CPS>=1 Y SYST + PLAT/- IMM OPA TX
 VA-ONC HN META/RECUR CPS>=1 Y SYST + PLAT/- IMM CET/PLAT/FLU
 VA-ONC HN META/RECUR CPS>=1 Y SYST + PLAT/- IMM CL TR
 VA-ONC HN META/RECUR CPS>=1 Y SYST + PLAT/IMM OPA TX
 VA-ONC HN META/RECUR CPS>=1 Y SYST + PLAT/IMM PEM/PLAT/FLU
 VA-ONC HN META/RECUR CPS>=1 Y SYST + PLAT/IMM CL TR
 VA-ONC HN METASTATIC OR RECUR SYST + PD-L1 TEST ORDERED
 VA-ONC HN LOC/REG RECUR CLINICAL PATHWAY [C]
 VA-ONC HN LOC/REG RECUR PSURG NEG MARG OPA RSN
 VA-ONC HN LOC/REG RECUR PSURG POS MARG OPA RSN
 VA-ONC HN LOC/REG RECUR OPA RSN
 VA-ONC HN LOC/REG RECUR PSURG NEG MARG OPA TX
 VA-ONC HN LOC/REG RECUR PSURG NEG MARG SURV
 VA-ONC HN LOC/REG RECUR PSURG NEG MARG CL TR
 VA-ONC HN LOC/REG RECUR PSURG POS MARG OPA TX
 VA-ONC HN LOC/REG RECUR PSURG POS MARG RAD
 VA-ONC HN LOC/REG RECUR PSURG POS MARG R/RS
 VA-ONC HN LOC/REG RECUR PSURG POS MARG CL TR
 VA-ONC HN LOC/REG RECUR OPA TX
 VA-ONC HN LOC/REG RECUR RESECT
 VA-ONC HN LOC/REG RECUR RAD PRIMARY
 VA-ONC HN LOC/REG RECUR CL TR
 VA-ONC HN SUBGLO T1-4,N1-3&T3-4,N0,M0 CLINICAL PATHWAY [C]
 VA-ONC HN SUBG T1-4,N1-3&T3-4,N0,M0 PTOT NO ADV OPA RSN

VA-ONC HN SUBG T1-4,N1-3&T3-4,N0,M0 PTOT ADV ONLY OPA RSN
VA-ONC HN SUBG T1-4,N1-3&T3-4,N0,M0 PTOT ADV/EXNO/+MRG OPA RSN
VA-ONC HN SUBG T1-4,N1-3&T3-4,N0,M0 PPAR NO ADV OPA RSN
VA-ONC HN SUBG T1-4,N1-3&T3-4,N0,M0 PPAR ADV ONLY OPA RSN
VA-ONC HN SUBG T1-4,N1-3&T3-4,N0,M0 PPAR ADV/EXNO/+MRG OPA RSN
VA-ONC HN SUBGLO T1-4,N1-3&T3-4,N0,M0 FOP N OPA RSN
VA-ONC HN SUBGLO T1-4,N1-3&T3-4,N0,M0 FOP Y PRT N OPA RSN
VA-ONC HN SUBGLO T1-4,N1-3&T3-4,N0,M0 FOP Y PRT Y OPA RSN
VA-ONC HN SUBG T1-4,N1-3&T3-4,N0,M0 PTOT NO ADV OPA TX
VA-ONC HN SUBG T1-4,N1-3&T3-4,N0,M0 PTOT NO ADV SURVEILLANCE
VA-ONC HN SUBG T1-4,N1-3&T3-4,N0,M0 PTOT NO ADV CL TR
VA-ONC HN SUBG T1-4,N1-3&T3-4,N0,M0 PTOT ADV ONLY OPA TX
VA-ONC HN SUBG T1-4,N1-3&T3-4,N0,M0 PTOT ADV ONLY RADIATION TX
VA-ONC HN SUBG T1-4,N1-3&T3-4,N0,M0 PTOT ADV ONLY CL TR
VA-ONC HN SUBG T1-4,N1-3&T3-4,N0,M0 PTOT ADV/EXNO/+MRG OPA TX
VA-ONC HN SUBG T1-4,N1-3&T3-4,N0,M0 PTOT ADV/EXNO/+MRG RAD/CPA
VA-ONC HN SUBG T1-4,N1-3&T3-4,N0,M0 PTOT ADV/EXNO/+MRG RAD/CFL
VA-ONC HN SUBG T1-4,N1-3&T3-4,N0,M0 PTOT ADV/EXNO/+MRG RAD/CIS
VA-ONC HN SUBG T1-4,N1-3&T3-4,N0,M0 PTOT ADV/EXNO/+MRG CL TR
VA-ONC HN SUBG T1-4,N1-3&T3-4,N0,M0 PPAR NO ADV OPA TX
VA-ONC HN SUBG T1-4,N1-3&T3-4,N0,M0 PPAR NO ADV SURVEILLANCE
VA-ONC HN SUBG T1-4,N1-3&T3-4,N0,M0 PPAR NO ADV CL TR
VA-ONC HN SUBG T1-4,N1-3&T3-4,N0,M0 PPAR ADV ONLY OPA TX
VA-ONC HN SUBG T1-4,N1-3&T3-4,N0,M0 PPAR ADV ONLY RADIATION TX
VA-ONC HN SUBG T1-4,N1-3&T3-4,N0,M0 PPAR ADV ONLY CL TR
VA-ONC HN SUBG T1-4,N1-3&T3-4,N0,M0 PPAR ADV/EXNO/+MRG OPA TX
VA-ONC HN SUBG T1-4,N1-3&T3-4,N0,M0 PPAR ADV/EXNO/+MRG RAD/CPA
VA-ONC HN SUBG T1-4,N1-3&T3-4,N0,M0 PPAR ADV/EXNO/+MRG RAD/CFL
VA-ONC HN SUBG T1-4,N1-3&T3-4,N0,M0 PPAR ADV/EXNO/+MRG RAD/CIS
VA-ONC HN SUBG T1-4,N1-3&T3-4,N0,M0 PPAR ADV/EXNO/+MRG CL TR
VA-ONC HN SUBGLO T1-4,N1-3&T3-4,N0,M0 FOP N OPA TX
VA-ONC HN SUBGLO T1-4,N1-3&T3-4,N0,M0 FOP N TOT LARYNG/NB DISS
VA-ONC HN SUBGLO T1-4,N1-3&T3-4,N0,M0 FOP N CL TR
VA-ONC HN SUBGLO T1-4,N1-3&T3-4,N0,M0 FOP Y PRT N OPA TX
VA-ONC HN SUBGLO T1-4,N1-3&T3-4,N0,M0 FOP Y PRT N RAD/CPA
VA-ONC HN SUBGLO T1-4,N1-3&T3-4,N0,M0 FOP Y PRT N RAD/CFL
VA-ONC HN SUBGLO T1-4,N1-3&T3-4,N0,M0 FOP Y PRT N RAD/CIS
VA-ONC HN SUBGLO T1-4,N1-3&T3-4,N0,M0 FOP Y PRT N CL TR
VA-ONC HN SUBGLO T1-4,N1-3&T3-4,N0,M0 FOP Y PRT Y OPA TX
VA-ONC HN SUBGLO T1-4,N1-3&T3-4,N0,M0 FOP Y PRT/NB DISS Y
VA-ONC HN SUBGLO T1-4,N1-3&T3-4,N0,M0 FOP Y PRT Y CL TR
VA-ONC HN SUBGLOTTIS T1-2, N0, M0 CLINICAL PATHWAY [C]
VA-ONC HN SUBGLO T1-2, N0, M0 POST RES NO EXNO/MRG OPA RSN
VA-ONC HN SUBGLO T1-2, N0, M0 POST RES W/+ MRG R/RS N OPA RSN
VA-ONC HN SUBGLO T1-2, N0, M0 POST RES W/+ MRG R/RS Y OPA RSN
VA-ONC HN SUBGLOTTIS T1-2, N0, M0 POST RESECT W/EXNO OPA RSN
VA-ONC HN SUBGLOTTIS T1-2, N0, M0 OPA RSN
VA-ONC HN SUBGLO T1-2, N0, M0 POST RES NO EXNO/MRG OPA TX
VA-ONC HN SUBGLO T1-2, N0, M0 POST RES NO EXNO/MRG SURV
VA-ONC HN SUBGLO T1-2, N0, M0 POST RES NO EXNO/MRG CL TR
VA-ONC HN SUBGLO T1-2, N0, M0 POST RES W/+ MRG R/RS N OPA TX

VA-ONC HN SUBGLO T1-2, N0, M0 POST RES W/+ MRG R/RS N RAD/CPA
VA-ONC HN SUBGLO T1-2, N0, M0 POST RES W/+ MRG R/RS N RAD/CFL
VA-ONC HN SUBGLO T1-2, N0, M0 POST RES W/+ MRG R/RS N RAD/CIS
VA-ONC HN SUBGLO T1-2, N0, M0 POST RES W/+ MRG R/RS N CL TR
VA-ONC HN SUBGLO T1-2, N0, M0 POST RES W/+ MRG R/RS Y OPA TX
VA-ONC HN SUBGLO T1-2, N0, M0 POST RES W/+ MRG R/RS SURG YES
VA-ONC HN SUBGLO T1-2, N0, M0 POST RES W/+ MRG R/RS Y CL TR
VA-ONC HN SUBGLOTTIS T1-2, N0, M0 POST RESECT W/EXNO OPA TX
VA-ONC HN SUBGLOTTIS T1-2, N0, M0 POST RESECT W/EXNO RAD/CPA
VA-ONC HN SUBGLOTTIS T1-2, N0, M0 POST RESECT W/EXNO RAD/CFL
VA-ONC HN SUBGLOTTIS T1-2, N0, M0 POST RESECT W/EXNO RAD/CIS
VA-ONC HN SUBGLOTTIS T1-2, N0, M0 POST RESECT W/EXNO CL TR
VA-ONC HN SUBGLOTTIS T1-2, N0, M0 OPA TX
VA-ONC HN SUBGLOTTIS T1-2, N0, M0 RADIATION PRIM SITE
VA-ONC HN SUBGLOTTIS T1-2, N0, M0 RESECT W/NOD BASIN DISSECT
VA-ONC HN SUBGLOTTIS T1-2, N0, M0 CL TR
VA-ONC HN GLOTTIS T1-4, N1-3 & T3-4, N0, M0 CLINICAL PATHWAY [C]
VA-ONC HN GLOTTIS T1-4, N1-3&T3-4, N0, M0 PTOT NO ADV OPA RSN
VA-ONC HN GLOTTIS T1-4, N1-3&T3-4, N0, M0 PTOT ADV ONLY OPA RSN
VA-ONC HN GLOTTIS T1-4, N1-3&T3-4, N0, M0 PTOT ADV/EX/+MRG OPA RSN
VA-ONC HN GLOTTIS T1-4, N1-3&T3-4, N0, M0 PPAR NO ADV OPA RSN
VA-ONC HN GLOTTIS T1-4, N1-3&T3-4, N0, M0 PPAR ADV ONLY OPA RSN
VA-ONC HN GLOTTIS T1-4, N1-3&T3-4, N0, M0 PPAR AD/EX/+MRG OPA RSN
VA-ONC HN GLOTTIS T1-4, N1-3&T3-4, N0, M0 FOP N TOT Y OPA RSN
VA-ONC HN GLOTTIS T1-4, N1-3&T3-4, N0, M0 FOP Y PRT N OPA RSN
VA-ONC HN GLOTTIS T1-4, N1-3&T3-4, N0, M0 FOP Y PRT Y OPA RSN
VA-ONC HN GLOTTIS T1-4, N1-3&T3-4, N0, M0 PTOT NO ADV OPA TX
VA-ONC HN GLOTTIS T1-4, N1-3&T3-4, N0, M0 PTOT NO ADV SURV
VA-ONC HN GLOTTIS T1-4, N1-3&T3-4, N0, M0 PTOT NO ADV CL TR
VA-ONC HN GLOTTIS T1-4, N1-3&T3-4, N0, M0 PTOT ADV ONLY OPA TX
VA-ONC HN GLOTTIS T1-4, N1-3&T3-4, N0, M0 PTOT ADV ONLY RAD TX
VA-ONC HN GLOTTIS T1-4, N1-3&T3-4, N0, M0 PTOT ADV ONLY CL TR
VA-ONC HN GLOTTIS T1-4, N1-3&T3-4, N0, M0 PTOT ADV/EX/+MRG OPA TX
VA-ONC HN GLOTTIS T1-4, N1-3&T3-4, N0, M0 PTOT ADV/EX/+MRG RAD/CPA
VA-ONC HN GLOTTIS T1-4, N1-3&T3-4, N0, M0 PTOT ADV/EX/+MRG RAD/CFL
VA-ONC HN GLOTTIS T1-4, N1-3&T3-4, N0, M0 PTOT ADV/EX/+MRG RAD/CIS
VA-ONC HN GLOTTIS T1-4, N1-3&T3-4, N0, M0 PTOT ADV/EX/+MRG CL TR
VA-ONC HN GLOTTIS T1-4, N1-3&T3-4, N0, M0 PPAR NO ADV OPA TX
VA-ONC HN GLOTTIS T1-4, N1-3&T3-4, N0, M0 PPAR NO ADV SURV
VA-ONC HN GLOTTIS T1-4, N1-3&T3-4, N0, M0 PPAR NO ADV CL TR
VA-ONC HN GLOTTIS T1-4, N1-3&T3-4, N0, M0 PPAR ADV ONLY OPA TX
VA-ONC HN GLOTTIS T1-4, N1-3&T3-4, N0, M0 PPAR ADV ONLY RAD TX
VA-ONC HN GLOTTIS T1-4, N1-3&T3-4, N0, M0 PPAR ADV ONLY CL TR
VA-ONC HN GLOTTIS T1-4, N1-3&T3-4, N0, M0 PPAR AD/EX/+MRG OPA TX
VA-ONC HN GLOTTIS T1-4, N1-3&T3-4, N0, M0 PPAR AD/EX/+MRG RAD/CPA
VA-ONC HN GLOTTIS T1-4, N1-3&T3-4, N0, M0 PPAR AD/EX/+MRG RAD/CFL
VA-ONC HN GLOTTIS T1-4, N1-3&T3-4, N0, M0 PPAR AD/EX/+MRG RAD/CIS
VA-ONC HN GLOTTIS T1-4, N1-3&T3-4, N0, M0 PPAR AD/EX/+MRG CL TR
VA-ONC HN GLOTTIS T1-4, N1-3&T3-4, N0, M0 FOP N TOT Y OPA TX
VA-ONC HN GLOTTIS T1-4, N1-3&T3-4, N0, M0 FOP N TOT Y LAR/NB DISS
VA-ONC HN GLOTTIS T1-4, N1-3&T3-4, N0, M0 FOP N TOT Y CL TR

VA-ONC HN GLOTTIS T1-4,N1-3&T3-4,N0,M0 FOP Y PRT N OPA TX
VA-ONC HN GLOTTIS T1-4,N1-3&T3-4,N0,M0 FOP Y PRT N RAD/CPA
VA-ONC HN GLOTTIS T1-4,N1-3&T3-4,N0,M0 FOP Y PRT N RAD/CFL
VA-ONC HN GLOTTIS T1-4,N1-3&T3-4,N0,M0 FOP Y PRT N RAD/CIS
VA-ONC HN GLOTTIS T1-4,N1-3&T3-4,N0,M0 FOP Y PRT N CL TR
VA-ONC HN GLOTTIS T1-4,N1-3&T3-4,N0,M0 FOP Y PRT Y OPA TX
VA-ONC HN GLOTTIS T1-4,N1-3&T3-4,N0,M0 FOP Y PRT/NB DISS SURG Y
VA-ONC HN GLOTTIS T1-4,N1-3&T3-4,N0,M0 FOP Y PRT CAND Y CL TR
VA-ONC HN GLOTTIS T1-2, N0, M0 CLINICAL PATHWAY [C]
VA-ONC HN GLOTTIS T1-2, N0, M0 POST SURG NEG MARG OPA RSN
VA-ONC HN GLOTTIS T1-2, N0, M0 POST SURG POS MARG OPA RSN
VA-ONC HN GLOTTIS T1-2, N0, M0 OPA RSN
VA-ONC HN GLOTTIS T1-2, N0, M0 POST SURG NEG MARG OPA TX
VA-ONC HN GLOTTIS T1-2, N0, M0 POST SURG NEG MARG SURVEILLANCE
VA-ONC HN GLOTTIS T1-2, N0, M0 POST SURG NEG MARG CL TR
VA-ONC HN GLOTTIS T1-2, N0, M0 POST SURG POS MARG OPA TX
VA-ONC HN GLOTTIS T1-2, N0, M0 POST SURG POS MARG RADIATION TX
VA-ONC HN GLOTTIS T1-2, N0, M0 POST SURG POS MARG RE-RESECT
VA-ONC HN GLOTTIS T1-2, N0, M0 POST SURG POS MARG CL TR
VA-ONC HN GLOTTIS T1-2, N0, M0 OPA TX
VA-ONC HN GLOTTIS T1-2, N0, M0 RADIATION PRIM SITE
VA-ONC HN GLOTTIS T1-2, N0, M0 SURG RESECTION
VA-ONC HN GLOTTIS T1-2, N0, M0 CL TR
VA-ONC HN SUPRAGLOTTIS T1-4,N1-3&T3-4,N0,M0 CLINICAL PATHWAY [C]
VA-ONC HN SUP T1-4,N1-3&T3-4,N0,M0 PTOT NO ADFE OPA RSN
VA-ONC HN SUP T1-4,N1-3&T3-4,N0,M0 PTOT NO ADFE OPA TX
VA-ONC HN SUP T1-4,N1-3&T3-4,N0,M0 PTOT NO ADFE SURVEILLANCE
VA-ONC HN SUP T1-4,N1-3&T3-4,N0,M0 PTOT NO ADFE CL TR
VA-ONC HN SUP T1-4,N1-3&T3-4,N0,M0 PTOT +ADFE ONLY OPA RSN
VA-ONC HN SUP T1-4,N1-3&T3-4,N0,M0 PTOT +ADFE ONLY OPA TX
VA-ONC HN SUP T1-4,N1-3&T3-4,N0,M0 PTOT +ADFE ONLY RADIATION TX
VA-ONC HN SUP T1-4,N1-3&T3-4,N0,M0 PTOT +ADFE ONLY CL TR
VA-ONC HN SUP T1-4,N1-3&T3-4,N0,M0 PTOT +ADFE/EX/MRG OPA RSN
VA-ONC HN SUP T1-4,N1-3&T3-4,N0,M0 PTOT +ADFE/EX/MRG OPA TX
VA-ONC HN SUP T1-4,N1-3&T3-4,N0,M0 PTOT +ADFE/EX/MRG RAD/CPA
VA-ONC HN SUP T1-4,N1-3&T3-4,N0,M0 PTOT +ADFE/EX/MRG RAD/CFL
VA-ONC HN SUP T1-4,N1-3&T3-4,N0,M0 PTOT +ADFE/EX/MRG RAD/CIS
VA-ONC HN SUP T1-4,N1-3&T3-4,N0,M0 PTOT +ADFE/EX/MRG CL TR
VA-ONC HN SUP T1-4,N1-3&T3-4,N0,M0 PPART NO ADFE OPA RSN
VA-ONC HN SUP T1-4,N1-3&T3-4,N0,M0 PPART NO ADFE OPA TX
VA-ONC HN SUP T1-4,N1-3&T3-4,N0,M0 PPART NO ADFE SURVEILLANCE
VA-ONC HN SUP T1-4,N1-3&T3-4,N0,M0 PPART NO ADFE CL TR
VA-ONC HN SUP T1-4,N1-3&T3-4,N0,M0 PPART +ADFE ONLY OPA RSN
VA-ONC HN SUP T1-4,N1-3&T3-4,N0,M0 PPART +ADFE ONLY OPA TX
VA-ONC HN SUP T1-4,N1-3&T3-4,N0,M0 PPART +ADFE ONLY RADIATION TX
VA-ONC HN SUP T1-4,N1-3&T3-4,N0,M0 PPART +ADFE ONLY CL TR
VA-ONC HN SUP T1-4,N1-3&T3-4,N0,M0 PPART +ADFE/EX/MRG OPA RSN
VA-ONC HN SUP T1-4,N1-3&T3-4,N0,M0 PPART +ADFE/EX/MRG OPA TX
VA-ONC HN SUP T1-4,N1-3&T3-4,N0,M0 PPART +ADFE/EX/MRG RAD/CPA
VA-ONC HN SUP T1-4,N1-3&T3-4,N0,M0 PPART +ADFE/EX/MRG RAD/CFL
VA-ONC HN SUP T1-4,N1-3&T3-4,N0,M0 PPART +AD/EX/MRG RAD/CIS

VA-ONC HN SUP T1-4,N1-3&T3-4,N0,M0 PPART +ADFE/EX/MRG CL TR
 VA-ONC HN SUP T1-4,N1-3&T3-4,N0,M0 +FOP/-CI PRT CAND N OPA RSN
 VA-ONC HN SUP T1-4,N1-3&T3-4,N0,M0 -FOP/-CI TOT CAND Y OPA RSN
 VA-ONC HN SUP T1-4,N1-3&T3-4,N0,M0 +FOP/-CI PRT CAND Y OPA RSN
 VA-ONC HN SUP T1-4,N1-3&T3-4,N0,M0 -FOP/-CI TOT CAND Y OPA TX
 VA-ONC HN SUP T1-4,N1-3&T3-4,N0,M0 -FOP/-CI TOT CAND Y SURG Y
 VA-ONC HN SUP T1-4,N1-3&T3-4,N0,M0 -FOP/-CI TOT CAND Y CL TR
 VA-ONC HN SUP T1-4,N1-3&T3-4,N0,M0 +FOP/-CI PRT CAND N OPA TX
 VA-ONC HN SUP T1-4,N1-3&T3-4,N0,M0 +FOP/-CI PRT CAND N RAD/CPA
 VA-ONC HN SUP T1-4,N1-3&T3-4,N0,M0 +FOP/-CI PRT CAND N RAD/CFL
 VA-ONC HN SUP T1-4,N1-3&T3-4,N0,M0 +FOP/-CI PRT CAND N RAD/CIS
 VA-ONC HN SUP T1-4,N1-3&T3-4,N0,M0 +FOP/-CI PRT CAND N CL TR
 VA-ONC HN SUP T1-4,N1-3&T3-4,N0,M0 +FOP/-CI PRT CAND Y OPA TX
 VA-ONC HN SUP T1-4,N1-3&T3-4,N0,M0 +FOP/-CI PRT CAND Y SURG Y
 VA-ONC HN SUP T1-4,N1-3&T3-4,N0,M0 +FOP/-CI PRT CAND Y CL TR
 VA-ONC HN SUPRAGLOTTIS T1-2,N0,M0 CLINICAL PATHWAY [C]
 VA-ONC HN SUPRAGLOTTIS T1-2,N0,M0 PSRG NO ADFE OPA RSN
 VA-ONC HN SUPRAGLOTTIS T1-2,N0,M0 PSRG ADFE Y EXNO+MRG N OPA RSN
 VA-ONC HN SUPRAGLOTTIS T1-2,N0,M0 PSRG ADFE EXNO+MRG Y OPA RSN
 VA-ONC HN SUPRAGLOTTIS T1-2,N0,M0 SURG RESECT CAND N OPA RSN
 VA-ONC HN SUPRAGLOTTIS T1-2,N0,M0 SURG RESECT CAND Y OPA RSN
 VA-ONC HN SUPRAGLOTTIS T1-2,N0,M0 PSRG NO ADFE OPA TX
 VA-ONC HN SUPRAGLOTTIS T1-2,N0,M0 PSRG NO ADFE SURVEILLANCE
 VA-ONC HN SUPRAGLOTTIS T1-2,N0,M0 PSRG NO ADFE CL TR
 VA-ONC HN SUPRAGLOTTIS T1-2,N0,M0 PSRG ADFE Y EXNO+MRG N OPA TX
 VA-ONC HN SUPRAGLOTTIS T1-2,N0,M0 PSRG ADFE Y EXNO+MRG N RAD
 VA-ONC HN SUPRAGLOTTIS T1-2,N0,M0 PSRG ADFE Y EXNO+MRG N CL TR
 VA-ONC HN SUPRAGLOTTIS T1-2,N0,M0 PSRG ADFE EXNO+MRG Y OPA TX
 VA-ONC HN SUPRAGLOTTIS T1-2,N0,M0 PSRG ADFE EXNO+MRG Y RAD/CPA
 VA-ONC HN SUPRAGLOTTIS T1-2,N0,M0 PSRG ADFE EXNO+MRG Y RAD/CFL
 VA-ONC HN SUPRAGLOTTIS T1-2,N0,M0 PSRG ADFE EXNO+MRG Y RAD/CIS
 VA-ONC HN SUPRAGLOTTIS T1-2,N0,M0 PSRG ADFE EXNO+MRG YES CL TR
 VA-ONC HN SUPRAGLOTTIS T1-2,N0,M0 SURG RESECT CAND N OPA TX
 VA-ONC HN SUPRAGLOTTIS T1-2,N0,M0 SURG RESECT CAND N RAD YES
 VA-ONC HN SUPRAGLOTTIS T1-2,N0,M0 SURG RESECT CAND N CL TR
 VA-ONC HN SUPRAGLOTTIS T1-2,N0,M0 SURG RESECT CAND Y OPA TX
 VA-ONC HN SUPRAGLOTTIS T1-2,N0,M0 SURG RESECT YES
 VA-ONC HN SUPRAGLOTTIS T1-2,N0,M0 SURG RESECT CAND Y CL TR
 VA-ONC HN NPHAR META/RECUR DISEASE CLINICAL PATHWAY [C]
 VA-ONC HN NPHAR META/RECUR DISEASE CLINICAL PATHWAY
 VA-ONC HN NPHAR META/RECUR DISEASE CLINICAL TRIAL
 VA-ONC HN NPHAR META/RECUR DISEASE CIS/GEMCIT/IMM CKPT INHIB
 VA-ONC HN NPHAR META/RECUR DISEASE CARBO/FLUORO/IMM CKPT INHIB
 VA-ONC HN NPHAR META/RECUR DISEASE CARBO/PACLI/IMM CKPT INHIB
 VA-ONC HN NPHAR META/RECUR DISEASE OPA TX
 VA-ONC HN NPHAR META/RECUR DISEASE OPA RSN
 VA-ONC HN NPHAR T0-1,N1,M0;T2,N0,M0&T2,N1,M0 EBV/IMAGE ORDERS
 VA-ONC HN NPHAR T1, N0, M0 EBV, PET/CT, MRI ORDERED
 VA-ONC HN HPHAR T1-4,N1-3&T3-4,N0,M0 CLINICAL PATHWAY [C]
 VA-ONC HN HPHAR T1-4,N1-3&T3-4,N0,M0 PSRG NO ADFE OPA RSN
 VA-ONC HN HPHAR T1-4,N1-3&T3-4,N0,M0 PSRG ADFE ONLY OPA RSN

VA-ONC HN HPHAR T1-4,N1-3&T3-4,N0,M0 PSRG Y AD EX+MRG Y OPA RSN
VA-ONC HN HPHAR T1-4,N1-3&T3-4,N0,M0 FX CAN N OPA RSN
VA-ONC HN HPHAR T1-4,N1-3&T3-4,N0,M0 FX CAN Y HR N OPA RSN
VA-ONC HN HPHAR T1-4,N1-3&T3-4,N0,M0 FX CAN Y HR Y OPA RSN
VA-ONC HN HPHAR T1-4,N1-3&T3-4,N0,M0 PSRG NO ADFE OPA TX
VA-ONC HN HPHAR T1-4,N1-3&T3-4,N0,M0 PSRG NO ADFE SURVEILLANCE
VA-ONC HN HPHAR T1-4,N1-3&T3-4,N0,M0 PSRG NO ADFE CL TR
VA-ONC HN HPHAR T1-4,N1-3&T3-4,N0,M0 PSRG ADFE ONLY OPA TX
VA-ONC HN HPHAR T1-4,N1-3&T3-4,N0,M0 PSRG ADFE ONLY RADIATION
VA-ONC HN HPHAR T1-4,N1-3&T3-4,N0,M0 PSRG ADFE ONLY CL TR
VA-ONC HN HPHAR T1-4,N1-3&T3-4,N0,M0 PSRG Y AD EX+MRG Y OPA TX
VA-ONC HN HPHAR T1-4,N1-3&T3-4,N0,M0 PSRG Y AD EX+MRG Y RAD/CPA
VA-ONC HN HPHAR T1-4,N1-3&T3-4,N0,M0 PSRG Y AD EX+MRG Y RAD/CFL
VA-ONC HN HPHAR T1-4,N1-3&T3-4,N0,M0 PSRG Y AD EX+MRG Y RAD/CIS
VA-ONC HN HPHAR T1-4,N1-3&T3-4,N0,M0 PSRG Y AD EX+MRG Y CL TR
VA-ONC HN HPHAR T1-4,N1-3&T3-4,N0,M0 FX CAN N OPA TX
VA-ONC HN HPHAR T1-4,N1-3&T3-4,N0,M0 FX CAN N SURG RES
VA-ONC HN HPHAR T1-4,N1-3&T3-4,N0,M0 FX CAN N CL TR
VA-ONC HN HPHAR T1-4,N1-3&T3-4,N0,M0 FX CAN Y HR N OPA TX
VA-ONC HN HPHAR T1-4,N1-3&T3-4,N0,M0 FX CAN Y HR N RAD/CPA
VA-ONC HN HPHAR T1-4,N1-3&T3-4,N0,M0 FX CAN Y HR N RAD/CFL
VA-ONC HN HPHAR T1-4,N1-3&T3-4,N0,M0 FX CAN Y HR N RAD/CIS
VA-ONC HN HPHAR T1-4,N1-3&T3-4,N0,M0 FX CAN Y HR N CL TR
VA-ONC HN HPHAR T1-4,N1-3&T3-4,N0,M0 FX CAN Y HR Y OPA TX
VA-ONC HN HPHAR T1-4,N1-3&T3-4,N0,M0 FX CAN Y HR Y DOC/CISFL
VA-ONC HN HPHAR T1-4,N1-3&T3-4,N0,M0 FX CAN Y HR Y CL TR
VA-ONC HN HPHAR T1-2, N0, M0 CLINICAL PATHWAY [C]
VA-ONC HN HPHAR T1-2, N0, M0 PSRG NO ADFE OPA RSN
VA-ONC HN HPHAR T1-2, N0, M0 PSRG Y ADFE EXNO+MRG N OPA RSN
VA-ONC HN HPHAR T1-2, N0, M0 PSRG Y ADFE EXNO+MRG Y OPA RSN
VA-ONC HN HPHAR T1-2, N0, M0 SURG CAND Y OPA RSN
VA-ONC HN HPHAR T1-2, N0, M0 RAD CAND Y OPA RSN
VA-ONC HN HPHAR T1-2, N0, M0 RAD CAND Y OPA TX
VA-ONC HN HPHAR T1-2, N0, M0 RAD CAND Y RADIATION
VA-ONC HN HPHAR T1-2, N0, M0 RAD CAND Y CL TR
VA-ONC HN HPHAR T1-2, N0, M0 PSRG NO ADFE OPA TX
VA-ONC HN HPHAR T1-2, N0, M0 PSRG NO ADFE SURVEILLANCE
VA-ONC HN HPHAR T1-2, N0, M0 PSRG NO ADFE CL TR
VA-ONC HN HPHAR T1-2, N0, M0 PSRG Y ADFE EXNO+MRG N OPA TX
VA-ONC HN HPHAR T1-2, N0, M0 PSRG Y ADFE EXNO+MRG N RAD
VA-ONC HN HPHAR T1-2, N0, M0 PSRG Y ADFE EXNO+MRG N CL TR
VA-ONC HN HPHAR T1-2, N0, M0 PSRG Y ADFE EXNO+MRG Y OPA TX
VA-ONC HN HPHAR T1-2, N0, M0 PSRG Y ADFE EXNO+MRG Y RAD/CPA
VA-ONC HN HPHAR T1-2, N0, M0 PSRG Y ADFE EXNO+MRG Y RAD/CFL
VA-ONC HN HPHAR T1-2, N0, M0 PSRG Y ADFE EXNO+MRG Y RAD/CIS
VA-ONC HN HPHAR T1-2, N0, M0 PSRG Y ADFE EXNO+MRG Y CL TR
VA-ONC HN HPHAR T1-2, N0, M0 SURG CAND Y OPA TX
VA-ONC HN HPHAR T1-2, N0, M0 SURGICAL RESECTION
VA-ONC HN HPHAR T1-2, N0, M0 SURG CAND Y CL TR
VA-ONC HN ORAL CAV RECUR CLINICAL PATHWAY [C]
VA-ONC HN ORAL RECUR PSRG RAD N SYST TX CAND N OPA RSN

VA-ONC HN ORAL RECUR PSRG RAD N SYST TX CAND N OPA TX
 VA-ONC HN ORAL RECUR PSRG RAD N SYST TX CAND N OBS ONLY
 VA-ONC HN ORAL RECUR PSRG RAD N SYST TX CAND N OBS/PALL
 VA-ONC HN ORAL RECUR PSRG RAD N SYST TX CAND N CL TR
 VA-ONC HN ORAL RECUR PSRG RAD N SYST TX CAND Y OPA RSN
 VA-ONC HN ORAL RECUR PSRG RAD N SYST TX CAND Y OPA TX
 VA-ONC HN ORAL RECUR PSRG RAD N SYST TX YES
 VA-ONC HN ORAL RECUR PSRG RAD N SYST TX CAND Y CL TR
 VA-ONC HN ORAL RECUR PSRG RAD/CHEM CAND Y OPA RSN
 VA-ONC HN ORAL RECUR PSRG RAD/CHEM CAND Y OPA TX
 VA-ONC HN ORAL RECUR PSRG RAD/CHEM CAND Y RAD/CPA
 VA-ONC HN ORAL RECUR PSRG RAD/CHEM CAND Y RAD/CFL
 VA-ONC HN ORAL RECUR PSRG RAD/CHEM CAND Y RAD/CIS
 VA-ONC HN ORAL RECUR PSRG RAD/CHEM CAND Y CL TR
 VA-ONC HN ORAL RECUR PSRG RAD TX CAND Y RADIATION TX
 VA-ONC HN ORAL RECUR SLVRS/RAD/CHEM NO SYST TX CAND N OPA RSN
 VA-ONC HN ORAL RECUR SLVRS/RAD/CHEM NO SYST TX CAND N OPA TX
 VA-ONC HN ORAL RECUR SLVRS/RAD/CHEM NO SYST TX CAND N OBS ONLY
 VA-ONC HN ORAL RECUR SLVRS/RAD/CHEM NO SYST TX CAND N OBS/PALL
 VA-ONC HN ORAL RECUR SLVRS/RAD/CHEM NO SYST TX CAND N CL TR
 VA-ONC HN ORAL RECUR SLVRS/RAD/CHEM NO SYST TX CAND Y OPA RSN
 VA-ONC HN ORAL RECUR SLVRS/RAD/CHEM NO SYST TX CAND Y OPA TX
 VA-ONC HN ORAL RECUR SLVRS/RAD/CHEM NO SYST TX YES
 VA-ONC HN ORAL RECUR SLVRS/RAD/CHEM NO SYST TX CAND Y CL TR
 VA-ONC HN ORAL CAV RECUR SALV RES CAND N RADCHEM CAND Y OPA RSN
 VA-ONC HN ORAL CAV RECUR SALV RES CAND OFF PATH RSN
 VA-ONC HN ORAL CAV RECUR SALV RES CAND N RADCHEM CAND Y OPA TX
 VA-ONC HN ORAL CAV RECUR SALV RES CAND N RADCHEM CAND Y RAD/CPA
 VA-ONC HN ORAL CAV RECUR SALV RES CAND N RADCHEM CAND Y RAD/CFL
 VA-ONC HN ORAL CAV RECUR SALV RES CAND N RADCHEM CAND Y RAD/CIS
 VA-ONC HN ORAL CAV RECUR SALV RES CAND N RADCHEM CAN Y CL TR
 VA-ONC HN ORAL CAV RECUR SALV RES CAND N RAD CAND Y RAD REF
 VA-ONC HN ORAL CAV RECUR SALV RES CAND OFF PATH TX
 VA-ONC HN ORAL CAV RECUR SALV RES CAND SURG YES
 VA-ONC HN ORAL CAV RECUR SALV RES CAND CLIN TRIAL
 VA-ONC HN ORAL CAV T1-4,N1-3,M0&T3-4,N0,M0 CLINICAL PATHWAY [C]
 VA-ONC HN ORAL CAV T1-4,N1-3,M0&T3-4,N0,M0 SRG Y OPA TX
 VA-ONC HN ORAL CAV T1-4,N1-3,M0&T3-4,N0,M0 SRG RESECT
 VA-ONC HN ORAL CAV T1-4,N1-3,M0&T3-4,N0,M0 SRG Y CL TR
 VA-ONC HN ORAL CAV T1-4,N1-3,M0&T3-4,N0,M0 PSRG EXNO Y OPA RSN
 VA-ONC HN ORCAV T1-4,N1-3,M0&T3-4,N0,M0 PSRG MARG/EXNO N OPA RSN
 VA-ONC HN ORCAV T1-4,N1-3,M0&T3-4,N0,M0 PSRG+MRG R/RS OPA RSN
 VA-ONC HN ORCAV T1-4,N1-3,M0&T3-4,N0,M0 PSRG+MRG R/RS N OPA RSN
 VA-ONC HN ORAL CAV T1-4,N1-3,M0&T3-4,N0,M0 SRG N OPA RSN
 VA-ONC HN ORAL CAV T1-4,N1-3,M0&T3-4,N0,M0 SRG Y OPA RSN
 VA-ONC HN ORCAV T1-4,N1-3,M0&T3-4,N0,M0 PSRG MARG/EXNO N OPA TX
 VA-ONC HN ORCAV T1-4,N1-3,M0&T3-4,N0,M0 PSRG MARG/EXNO N RAD Y
 VA-ONC HN ORCAV T1-4,N1-3,M0&T3-4,N0,M0 PSRG MARG/EXNO N CL TR
 VA-ONC HN ORAL CAV T1-4,N1-3,M0&T3-4,N0,M0 PSRG EXNO Y OPA TX
 VA-ONC HN ORAL CAV T1-4,N1-3,M0&T3-4,N0,M0 PSRG EXNO Y RAD/CPA
 VA-ONC HN ORAL CAV T1-4,N1-3,M0&T3-4,N0,M0 PSRG EXNO Y RAD/CFL

VA-ONC HN ORAL CAV T1-4,N1-3,M0&T3-4,N0,M0 PSRG EXNO Y RAD/CIS
VA-ONC HN ORAL CAV T1-4,N1-3,M0&T3-4,N0,M0 PSRG EXNO Y CL TR
VA-ONC HN ORCAV T1-4,N1-3,M0&T3-4,N0,M0 PSRG+MRG R/RS N OPA TX
VA-ONC HN ORCAV T1-4,N1-3,M0&T3-4,N0,M0 PSRG+MRG R/RS N RAD/CPA
VA-ONC HN ORCAV T1-4,N1-3,M0&T3-4,N0,M0 PSRG+MRG R/RS N RAD/CFL
VA-ONC HN ORCAV T1-4,N1-3,M0&T3-4,N0,M0 PSRG+MRG R/RS N RAD/CIS
VA-ONC HN ORCAV T1-4,N1-3,M0&T3-4,N0,M0 PSRG+MRG R/RS N CL TR
VA-ONC HN ORCAV T1-4,N1-3,M0&T3-4,N0,M0 PSRG+MRG R/RS OPA TX
VA-ONC HN ORCAV T1-4,N1-3,M0&T3-4,N0,M0 PSRG+MRG RE-RESECT
VA-ONC HN ORCAV T1-4,N1-3,M0&T3-4,N0,M0 PSRG+MRG R/RS Y CL TR
VA-ONC HN ORAL CAV T1-4,N1-3,M0&T3-4,N0,M0 SRG N OPA TX
VA-ONC HN ORAL CAV T1-4,N1-3,M0&T3-4,N0,M0 SRG N RAD/CPA
VA-ONC HN ORAL CAV T1-4,N1-3,M0&T3-4,N0,M0 SRG N RAD/CFL
VA-ONC HN ORAL CAV T1-4,N1-3,M0&T3-4,N0,M0 SRG N RAD/CIS
VA-ONC HN ORAL CAV T1-4,N1-3,M0&T3-4,N0,M0 SRG N CL TR
VA-ONC HN ORAL CAV T1-2, N0, M0 CLINICAL PATHWAY [C]
VA-ONC HN ORAL CAV T1-2, N0, M0 NO ADFE OPA TX
VA-ONC HN ORAL CAV T1-2, N0, M0 NO ADFE SURVEILLANCE
VA-ONC HN ORAL CAV T1-2, N0, M0 NO ADFE CL TR
VA-ONC HN ORAL CAV T1-2, N0, M0 ADFE/NO+MARG-EXNO OPA TX
VA-ONC HN ORAL CAV T1-2, N0, M0 ADFE/NO+MARG-EXNO RAD REFER
VA-ONC HN ORAL CAV T1-2, N0, M0 ADFE/NO+MARG-EXNO CL TR
VA-ONC HN ORAL CAV T1-2, N0, M0 ADFE/+ EXNO OPA TX
VA-ONC HN ORAL CAV T1-2, N0, M0 ADFE/+ EXNO RAD/CPA
VA-ONC HN ORAL CAV T1-2, N0, M0 ADFE/+ EXNO RAD/CFL
VA-ONC HN ORAL CAV T1-2, N0, M0 ADFE/+ EXNO RAD/CIS
VA-ONC HN ORAL CAV T1-2, N0, M0 ADFE/+ EXNO CL TR
VA-ONC HN ORAL CAV T1-2, N0, M0 ADFE/+ MARG NO RE-RES OPA TX
VA-ONC HN ORAL CAV T1-2, N0, M0 ADFE/+ MARG NO RE-RESECT RAD/CPA
VA-ONC HN ORAL CAV T1-2, N0, M0 ADFE/+ MARG NO RE-RESECT RAD/CFL
VA-ONC HN ORAL CAV T1-2, N0, M0 ADFE/+ MARG NO RE-RESECT RAD/CIS
VA-ONC HN ORAL CAV T1-2, N0, M0 ADFE/+ MARG NO RE-RES CL TR
VA-ONC HN ORAL CAV T1-2, N0, M0 ADFE/+ MARG RE-RES OPA TX
VA-ONC HN ORAL CAV T1-2, N0, M0 ADFE/+ MARG RE-RESECT YES
VA-ONC HN ORAL CAV T1-2, N0, M0 ADFE/+ MARG RE-RESECT CL TR
VA-ONC HN ORAL CAV T1-2, N0, M0 NOT SURG CAND T2 OPA TX
VA-ONC HN ORAL CAV T1-2, N0, M0 NOT SURG CAND T2 RAD REFER
VA-ONC HN ORAL CAV T1-2, N0, M0 NOT SURG CAND T2 CL TR
VA-ONC HN ORAL CAV T1-2, N0, M0 NOT SURG CAND T1 OPA TX
VA-ONC HN ORAL CAV T1-2, N0, M0 NOT SURG CAND T1 RAD REFER
VA-ONC HN ORAL CAV T1-2, N0, M0 NOT SURG CAND T1 CL TR
VA-ONC HN ORAL CAV T1-2, N0, M0 SURG CAND T1 OPA TX
VA-ONC HN ORAL CAV T1-2, N0, M0 SURG CAND T2 W/RESECT
VA-ONC HN ORAL CAV T1-2, N0, M0 SURG CAND T1 W/RESECT
VA-ONC HN ORAL CAV T1-2, N0, M0 SURG CAND T1 CL TR
VA-ONC HN ORAL CAV T1-2, N0, M0 SURG CAND T2 OPA RSN
VA-ONC HN ORAL CAV T1-2, N0, M0 SURG CAND T2 OPA TX
VA-ONC HN ORAL CAV T1-2, N0, M0 SURG CAND T2 CL TR
VA-ONC HN ORAL CAV T1-2, N0, M0 NO ADFE OPA RSN
VA-ONC HN ORAL CAV T1-2, N0, M0 ADFE/NO+MARG-EXNO OPA RSN
VA-ONC HN ORAL CAV T1-2, N0, M0 ADFE/+ EXNO OPA RSN

VA-ONC HN ORAL CAV T1-2, N0, M0 ADFE/+ MARG NO RE-RES OPA RSN
VA-ONC HN ORAL CAV T1-2, N0, M0 ADFE/+ MARG RE-RES OPA RSN
VA-ONC HN ORAL CAV T1-2, N0, M0 NOT SURG CAND T2 OPA RSN
VA-ONC HN ORAL CAV T1-2, N0, M0 NOT SURG CAND T1 OPA RSN
VA-ONC HN ORAL CAV T1-2, N0, M0 SURG CAND T1 OPA RSN
VA-ONC HN METASTATIC OR RECUR CLINICAL PATHWAY
VA-ONC HN LOC/REG RECUR CLINICAL PATHWAY
VA-ONC HN SUPRAGLOTTIS T1-4,N1-3&T3-4,N0,M0 CLINICAL PATHWAY
VA-ONC HN SUBGLO T1-4,N1-3&T3-4,N0,M0 CLINICAL PATHWAY
VA-ONC HN SUBGLOTTIS T1-2, N0, M0 CLINICAL PATHWAY
VA-ONC HN GLOTTIS T1-4, N1-3 & T3-4, N0, M0 CLINICAL PATHWAY
VA-ONC HN GLOTTIS T1-2, N0, M0 CLINICAL PATHWAY
VA-ONC HN SUPRAGLOTTIS T1-2,N0,M0 CLINICAL PATHWAY
VA-ONC HN HPHAR T1-4,N1-3&T3-4,N0,M0 CLINICAL PATHWAY
VA-ONC HN HPHAR T1-2, N0, M0 CLINICAL PATHWAY
VA-ONC HN ORAL CAV RECUR CLINICAL PATHWAY
VA-ONC HN ORAL CAV T1-4,N1-3,M0&T3-4,N0,M0 CLINICAL PATHWAY
VA-ONC HN ORAL CAV T1-2, N0, M0 CLINICAL PATHWAY

REMINDER SPONSORS

VHA ONCOLOGY

REMINDER TERMS

VA-REMINDER UPDATE_2_0_421

HEALTH SUMMARY COMPONENTS

PCE HEALTH FACTORS SELECTED

HEALTH SUMMARY TYPES

VA-ONCOLOGY PATHWAYS HEAD NECK

HEALTH SUMMARY OBJECTS

VA-ONCOLOGY PATHWAYS HEAD NECK (TIU)

TIU DOCUMENT DEFINITIONS

VA-ONCOLOGY PATHWAYS HEAD NECK

REMINDER DIALOGS

VA-ONCOLOGY HEAD NECK UNKNOWN PRIMARY PATHWAYS
VA-ONCOLOGY HEAD NECK METASTATIC OR RECURRENT DISEASE PATHWAYS
VA-ONCOLOGY HEAD NECK LOCAL/REGIONAL RECURRENT DISEASE PATHWAYS
VA-ONCOLOGY HEAD NECK LAR SUPRAGLOT/GLOTTIS/SUBGLOTTIS PATHWAYS
VA-ONCOLOGY HEAD NECK ORO/HYPO/NASOPHARYNX PATHWAYS
VA-ONCOLOGY HEAD NECK ORAL CAVITY PATHWAYS

Pre-Installation

1. From the **Reminder Dialog Management** menu, Inquire/Print (INQ) and capture/save the following ELEMENT:

ELEMENT: **VA-ONC RADIATION ONCOLOGY CONSULT**

(Identify any order that you have mapped as an additional finding. Re-mapping steps of this order are outlined in the post-Installation steps.)

Install Details

This update is being distributed as a web host file. The address for the host file is:

https://REDACTED/UPDATE_2_0_421.PRD

The file will be installed using Reminder Exchange, programmer access is not required.

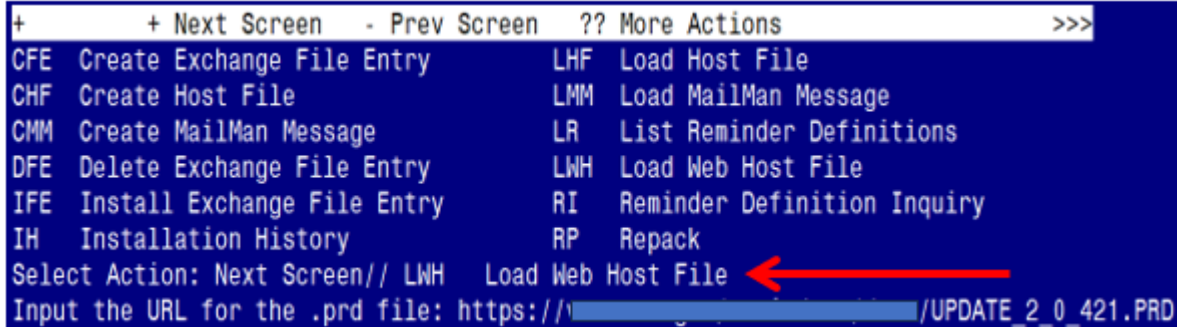
Installation:

=====

This update can be loaded with users on the system. Installation will take less than **30** minutes.

Install Example

To Load the Web Host File. Navigate to Reminder exchange in Vista



```
+      + Next Screen  - Prev Screen  ?? More Actions  >>>
CFE  Create Exchange File Entry      LHF  Load Host File
CHF  Create Host File                 LMM  Load MailMan Message
CMM  Create MailMan Message           LR   List Reminder Definitions
DFE  Delete Exchange File Entry       LWH  Load Web Host File
IFE  Install Exchange File Entry      RI   Reminder Definition Inquiry
IH   Installation History              RP   Repack
Select Action: Next Screen// LWH  Load Web Host File
Input the URL for the .prd file: https://REDACTED/UPDATE_2_0_421.PRD
```

At the **Select Action:** prompt, enter **LWH** for Load Web Host File

At the **Input the url for the .prd file:** prompt, type the following web address:

https://REDACTED/UPDATE_2_0_421.PRD

You should see a message at the top of your screen that the file successfully loaded.



```
https://REDACTED/UPDATE_2_0_421.PRD successfully loaded.
```

Search reminder exchange and locate an entry titled:

UPDATE_2_0_421 VA-ONCOLOGY HEAD AND NECK CANCER PATHWAYS

+Item	Entry	Source	Date Packed
535	UPDATE_2_0_421 VA-ONCOLOGY HEAD AND NECK CANCER PATHWAYS		02/09/2024@06:12
536	UPDATE_2_0_43 VA-SUICIDE RISK ASSESSMENT		08/08/2018@10:04
537	UPDATE_2_0_44 VA-MHRRTP TEMPLATES		05/09/2018@14:06
538	UPDATE_2_0_45 VA-MATERNITY CARE COORDINATOR NOTE		02/08/2019@10:51
539	UPDATE_2_0_46 VA-MH TOBACCO USE SCREEN		08/14/2018@09:34
+ + Next Screen - Prev Screen ?? More Actions >>>			
CFE	Create Exchange File Entry	LHF	Load Host File
CHF	Create Host File	LMM	Load MailMan Message
CMM	Create MailMan Message	LR	List Reminder Definitions
DFE	Delete Exchange File Entry	LWH	Load Web Host File
IFE	Install Exchange File Entry	RI	Reminder Definition Inquiry
IH	Installation History	RP	Repack
Select Action: Next Screen// IFE Install Exchange File Entry			
Enter a list or range of numbers (1-726): 535			

At the **Select Action** prompt, enter **IFE** for Install Exchange File Entry

Enter the number that corresponds with your entry:

UPDATE_2_0_421 VA-ONCOLOGY HEAD AND NECK CANCER PATHWAYS

(In this example it is entry 535. It will vary by site). The date of the exchange file should be 02/09/2024@06:12.

Component	Category	Exists
Source: [REDACTED]		
Date Packed: 02/09/2024@06:12:19		
Package Version: 2.0P65		
Description:		
The following Clinical Reminder items were selected for packing:		
REMINDER DIALOG		
VA-ONCOLOGY HEAD NECK ORAL CAVITY PATHWAYS		
VA-ONCOLOGY HEAD NECK ORO/HYPO/NASOPHARYNX PATHWAYS		
VA-ONCOLOGY HEAD NECK LAR SUPRAGLOT/GLOTTIS/SUBGLOTTIS PATHWAYS		
VA-ONCOLOGY HEAD NECK LOCAL/REGIONAL RECURRENT DISEASE PATHWAYS		
VA-ONCOLOGY HEAD NECK METASTATIC OR RECURRENT DISEASE PATHWAYS		
VA-ONCOLOGY HEAD NECK UNKNOWN PRIMARY PATHWAYS		
REMINDER TERM		
VA-REMINDER UPDATE 2_0_421		
+ Enter ?? for more actions >>>		
IA	Install all Components	IS Install Selected Component
Select Action: Next Screen// IA		

At the **Select Action** prompt, type **IA** for Install all Components and hit enter.

Select Action: Next Screen// **IA Install all Components**

You will see several prompts, for all new entries you will choose **I to Install**

For any components that already exists but the packed component is different, choose **O to Overwrite**.

**You will be prompted to install the 1st reminder dialog component
(VA-ONCOLOGY HEAD NECK UNKNOWN PRIMARY PATHWAYS)**

You will install all even though some components may have an X to indicate that they exist.

```
Packed reminder dialog: VA-ONCOLOGY HEAD NECK UNKNOWN PRIMARY PATHWAYS [NATIONAL
```

Item	Seq.	Dialog Findings	Type	Exists
1		VA-ONCOLOGY HEAD NECK UNKNOWN PRIMARY PATHWAYS	dialog	
2	10	VA-GP ONC HN UNKNOWN PRIMARY MAIN Finding: *NONE*	group	
3	10.20	VA-ONC HN UNK PATHWAY VERSION Finding: VA-ONC HN UNKNOWN PRIMARY CLINICAL PATHWAY (HEALTH FACTOR)	element	X
4	10.40	VA-ONC PATHWAY GEN INSTRUCT/INTENDED USER Finding: VIEW PROGRESS NOTE TEXT (REMINDER GENERAL FINDING)	element	X
5		PXRM GF VIEW BUTTON	prompt	X
6	10.60	VA-ONC HEAD NECK SHAREPOINT VIEW ABBREVIATION Finding: VIEW PROGRESS NOTE TEXT (REMINDER GENERAL FINDING)	element	X
7		PXRM GF VIEW BUTTON	prompt	X
8	10.80	VA-ONC HEAD NECK PRESUMPTIVE CONDITIONS Finding: VIEW PROGRESS NOTE TEXT (REMINDER GENERAL FINDING)	element	X

```
+ + Next Screen - Prev Screen ?? More Actions
DD Dialog Details DT Dialog Text IS Install Selected
DF Dialog Findings DU Dialog Usage QU Quit
DS Dialog Summary IA Install All
Select Action: Next Screen// IA
```

At the **Select Action** prompt, type **IA** to install the dialog:

VA-ONCOLOGY HEAD NECK UNKNOWN PRIMARY PATHWAYS

Select Action: Next Screen// **IA Install All**

Install reminder dialog and all components with no further changes: Y// **Yes**

```
Packed reminder dialog: VA-ONCOLOGY HEAD NECK UNKNOWN PRIMARY PATHWAYS [NATIONAL
VA-ONCOLOGY HEAD NECK UNKNOWN PRIMARY PATHWAYS (reminder dialog) installed from
```

Item	Seq.	Dialog Findings	Type	Exists
1		VA-ONCOLOGY HEAD NECK UNKNOWN PRIMARY PATHWAYS	dialog	X
2	10	VA-GP ONC HN UNKNOWN PRIMARY MAIN Finding: *NONE*	group	X
3	10.20	VA-ONC HN UNK PATHWAY VERSION Finding: VA-ONC HN UNKNOWN PRIMARY CLINICAL PATHWAY (HEALTH FACTOR)	element	X
4	10.40	VA-ONC PATHWAY GEN INSTRUCT/INTENDED USER Finding: VIEW PROGRESS NOTE TEXT (REMINDER GENERAL FINDING)	element	X
5		PXRM GF VIEW BUTTON	prompt	X
6	10.60	VA-ONC HEAD NECK SHAREPOINT VIEW ABBREVIATION Finding: VIEW PROGRESS NOTE TEXT (REMINDER GENERAL FINDING)	element	X
7		PXRM GF VIEW BUTTON	prompt	X
8	10.80	VA-ONC HEAD NECK PRESUMPTIVE CONDITIONS Finding: VIEW PROGRESS NOTE TEXT (REMINDER GENERAL FINDING)	element	X

```
+ + Next Screen - Prev Screen ?? More Actions
DD Dialog Details DT Dialog Text IS Install Selected
DF Dialog Findings DU Dialog Usage QU Quit
DS Dialog Summary IA Install All
Select Action: Next Screen// Q
```

After completing this dialog install, you will type **Q**.

You will be prompted to install the 2nd reminder dialog component
(VA-ONCOLOGY HEAD NECK METASTATIC OR RECURRENT DISEASE PATHWAYS)
 You will install all even though some components may have an X to indicate that they exist.

```
Packed reminder dialog: VA-ONCOLOGY HEAD NECK METASTATIC OR RECURRENT DISEASE PA
Item Seq. Dialog Findings Type Exists
1 VA-ONCOLOGY HEAD NECK METASTATIC OR RECURRENT DISEASE PATHWAYS dialog
2 10 VA-GP ONC HN METASTATIC OR RECURRENT DISEASE MAIN group
Finding: *NONE*
3 10.20 VA-ONC HN METASTATIC/RECUR DISEASE PATHWAY element
VERSION
Finding: *NONE*
4 10.40 VA-ONC PATHWAY GEN INSTRUCT/INTENDED USER element X
Finding: VIEW PROGRESS NOTE TEXT (REMINDER GENERAL FINDING) X
5 10.60 VA-ONC HEAD NECK SHAREPOINT VIEW ABBREVIATION element X
Finding: VIEW PROGRESS NOTE TEXT (REMINDER GENERAL FINDING) X
6 10.80 VA-ONC HEAD NECK PRESUMPTIVE CONDITIONS element X
Finding: VIEW PROGRESS NOTE TEXT (REMINDER GENERAL FINDING) X
7 10.100 VA-ONC NPOP TESTING INFORMATION element X
+ Next Screen - Prev Screen ?? More Actions
DD Dialog Details DT Dialog Text IS Install Selected
DF Dialog Findings DU Dialog Usage QU Quit
DS Dialog Summary IA Install All
Select Action: Next Screen// IA
```

At the **Select Action** prompt, type **IA** to install the dialog:
VA-ONCOLOGY HEAD NECK METASTATIC OR RECURRENT DISEASE PATHWAYS

Select Action: Next Screen// **IA Install All**
 Install reminder dialog and all components with no further changes: Y// **Yes**

```
Packed reminder dialog: VA-ONCOLOGY HEAD NECK METASTATIC OR RECURRENT DISEASE PA
VA-ONCOLOGY HEAD NECK METASTATIC OR RECURRENT DISEASE PATHWAYS (reminder dialog)
Item Seq. Dialog Findings Type Exists
1 VA-ONCOLOGY HEAD NECK METASTATIC OR RECURRENT DISEASE PATHWAYS dialog X
2 10 VA-GP ONC HN METASTATIC OR RECURRENT DISEASE MAIN group X
Finding: *NONE*
3 10.20 VA-ONC HN METASTATIC/RECUR DISEASE PATHWAY element X
VERSION
Finding: *NONE*
4 10.40 VA-ONC PATHWAY GEN INSTRUCT/INTENDED USER element X
Finding: VIEW PROGRESS NOTE TEXT (REMINDER GENERAL FINDING) X
5 10.60 VA-ONC HEAD NECK SHAREPOINT VIEW ABBREVIATION element X
Finding: VIEW PROGRESS NOTE TEXT (REMINDER GENERAL FINDING) X
6 10.80 VA-ONC HEAD NECK PRESUMPTIVE CONDITIONS element X
Finding: VIEW PROGRESS NOTE TEXT (REMINDER GENERAL FINDING) X
7 10.100 VA-ONC NPOP TESTING INFORMATION element X
+ Next Screen - Prev Screen ?? More Actions
DD Dialog Details DT Dialog Text IS Install Selected
DF Dialog Findings DU Dialog Usage QU Quit
DS Dialog Summary IA Install All
Select Action: Next Screen// Q
```

After completing this dialog install, you will type **Q**.

You will be prompted to install the 3rd reminder dialog component
(VA-ONCOLOGY HEAD NECK LOCAL/REGIONAL RECURRENT DISEASE PATHWAYS)
 You will install all even though some components may have an X to indicate that they exist.

```
Packed reminder dialog: VA-ONCOLOGY HEAD NECK LOCAL/REGIONAL RECURRENT DISEASE P
```

Item	Seq.	Dialog Findings	Type	Exists
1		VA-ONCOLOGY HEAD NECK LOCAL/REGIONAL RECURRENT DISEASE PATHWAYS	dialog	
2	10	VA-GP ONC HN LOCAL/REGIONAL RECURRENT DISEASE MAIN	group	
		Finding: *NONE*		
3	10.20	VA-ONC HN LOCAL/REG RECUR DIS PATHWAY VERSION	element	
		Finding: *NONE*		
4	10.40	VA-ONC PATHWAY GEN INSTRUCT/INTENDED USER	element	X
		Finding: VIEW PROGRESS NOTE TEXT (REMINDER GENERAL FINDING)		X
5	10.60	VA-ONC HEAD NECK SHAREPOINT VIEW ABBREVIATION	element	X
		Finding: VIEW PROGRESS NOTE TEXT (REMINDER GENERAL FINDING)		X
6	10.80	VA-ONC HEAD NECK PRESUMPTIVE CONDITIONS	element	X
		Finding: VIEW PROGRESS NOTE TEXT (REMINDER GENERAL FINDING)		X
7	10.100	VA-ONC NPOP TESTING INFORMATION	element	X

```
+ + Next Screen - Prev Screen ?? More Actions
DD Dialog Details DT Dialog Text IS Install Selected
DF Dialog Findings DU Dialog Usage QU Quit
DS Dialog Summary IA Install All
Select Action: Next Screen// IA
```

At the **Select Action** prompt, type **IA** to install the dialog:
VA-ONCOLOGY HEAD NECK LOCAL/REGIONAL RECURRENT DISEASE PATHWAYS

Select Action: Next Screen// **IA Install All**

Install reminder dialog and all components with no further changes: Y// **Yes**

```
Packed reminder dialog: VA-ONCOLOGY HEAD NECK LOCAL/REGIONAL RECURRENT DISEASE P
VA-ONCOLOGY HEAD NECK LOCAL/REGIONAL RECURRENT DISEASE PATHWAYS (reminder dialog
```

Item	Seq.	Dialog Findings	Type	Exists
1		VA-ONCOLOGY HEAD NECK LOCAL/REGIONAL RECURRENT DISEASE PATHWAYS	dialog	X
2	10	VA-GP ONC HN LOCAL/REGIONAL RECURRENT DISEASE MAIN	group	X
		Finding: *NONE*		
3	10.20	VA-ONC HN LOCAL/REG RECUR DIS PATHWAY VERSION	element	X
		Finding: *NONE*		
4	10.40	VA-ONC PATHWAY GEN INSTRUCT/INTENDED USER	element	X
		Finding: VIEW PROGRESS NOTE TEXT (REMINDER GENERAL FINDING)		X
5	10.60	VA-ONC HEAD NECK SHAREPOINT VIEW ABBREVIATION	element	X
		Finding: VIEW PROGRESS NOTE TEXT (REMINDER GENERAL FINDING)		X
6	10.80	VA-ONC HEAD NECK PRESUMPTIVE CONDITIONS	element	X
		Finding: VIEW PROGRESS NOTE TEXT (REMINDER GENERAL FINDING)		X
7	10.100	VA-ONC NPOP TESTING INFORMATION	element	X

```
+ + Next Screen - Prev Screen ?? More Actions
DD Dialog Details DT Dialog Text IS Install Selected
DF Dialog Findings DU Dialog Usage QU Quit
DS Dialog Summary IA Install All
Select Action: Next Screen// Q
```

After completing this dialog install, you will type **Q**.

You will be prompted to install the 4th reminder dialog component

(VA-ONCOLOGY HEAD NECK LAR SUPRAGLOT/GLOTTIS/SUBGLOTTIS PATHWAYS)

You will install all even though some components may have an X to indicate that they exist.

```
Packed reminder dialog: VA-ONCOLOGY HEAD NECK LAR SUPRAGLOT/GLOTTIS/SUBGLOTTIS P
Item Seq. Dialog Findings Type Exists
1 VA-ONCOLOGY HEAD NECK LAR SUPRAGLOT/GLOTTIS/SUBGLOT dialog X
TIS PATHWAYS
2 10 VA-GP ONC HN SUPRAGLOTTIS, GLOTTIS, SUBGLOTTIS group X
MAIN
Finding: *NONE*
3 10.20 VA-ONC HN SUPRA/GLOTTIS/SUB PATHWAY VERSION element X
Finding: *NONE*
4 10.40 VA-ONC PATHWAY GEN INSTRUCT/INTENDED USER X
5 10.60 VA-ONC HEAD NECK SHAREPOINT VIEW ABBREVIATION X
6 10.80 VA-ONC HEAD NECK PRESUMPTIVE CONDITIONS X
7 10.100 VA-ONC NPOP TESTING INFORMATION X
8 10.120 VA-ONCOLOGY PATHWAYS HEAD NECK PRIOR DATA X
OBJECT
9 10.140 VA-ONCOLOGY PATHWAYS HEAD NECK PREVIOUS DATA X
+ + Next Screen - Prev Screen ?? More Actions
DD Dialog Details DT Dialog Text IS Install Selected
DF Dialog Findings DU Dialog Usage QU Quit
DS Dialog Summary IA Install All
Select Action: Next Screen// IA
```

At the **Select Action** prompt, type **IA** to install the dialog:

VA-ONCOLOGY HEAD NECK LAR SUPRAGLOT/GLOTTIS/SUBGLOTTIS PATHWAYS

Select Action: Next Screen// **IA Install All**

Install reminder dialog and all components with no further changes: Y// **Yes**

```
Packed reminder dialog: VA-ONCOLOGY HEAD NECK LAR SUPRAGLOT/GLOTTIS/SUBGLOTTIS P
VA-ONCOLOGY HEAD NECK LAR SUPRAGLOT/GLOTTIS/SUBGLOTTIS PATHWAYS (reminder dialog
Item Seq. Dialog Findings Type Exists
1 VA-ONCOLOGY HEAD NECK LAR SUPRAGLOT/GLOTTIS/SUBGLOT dialog X
TIS PATHWAYS
2 10 VA-GP ONC HN SUPRAGLOTTIS, GLOTTIS, SUBGLOTTIS group X
MAIN
Finding: *NONE*
3 10.20 VA-ONC HN SUPRA/GLOTTIS/SUB PATHWAY VERSION element X
Finding: *NONE*
4 10.40 VA-ONC PATHWAY GEN INSTRUCT/INTENDED USER X
5 10.60 VA-ONC HEAD NECK SHAREPOINT VIEW ABBREVIATION X
6 10.80 VA-ONC HEAD NECK PRESUMPTIVE CONDITIONS X
7 10.100 VA-ONC NPOP TESTING INFORMATION X
8 10.120 VA-ONCOLOGY PATHWAYS HEAD NECK PRIOR DATA X
OBJECT
9 10.140 VA-ONCOLOGY PATHWAYS HEAD NECK PREVIOUS DATA X
+ + Next Screen - Prev Screen ?? More Actions
DD Dialog Details DT Dialog Text IS Install Selected
DF Dialog Findings DU Dialog Usage QU Quit
DS Dialog Summary IA Install All
Select Action: Next Screen// Q
```

After completing this dialog install, you will type **Q**.

**You will be prompted to install the 5th reminder dialog component
(VA-ONCOLOGY HEAD NECK ORO/HYPO/NASOPHARYNX PATHWAYS)**

You will install all even though some components may have an X to indicate that they exist.

```
Packed reminder dialog: VA-ONCOLOGY HEAD NECK ORO/HYPO/NASOPHARYNX PATHWAYS [NAT
Item  Seq. Dialog Findings                                     Type  Exists
  1    VA-ONCOLOGY HEAD NECK ORO/HYPO/NASOPHARYNX PATHWAYS  dialog
  2    10 VA-GP ONC HN ORO/HYPO/NASOPHARYNX MAIN              group
      Finding: *NONE*
  3    10.20 VA-ONC HN ORO/HYPO/NASOPHARYNX PATHWAY VERSION  element
      Finding: *NONE*
  4    10.40 VA-ONC PATHWAY GEN INSTRUCT/INTENDED USER       element  X
      Finding: VIEW PROGRESS NOTE TEXT (REMINDER GENERAL FINDING)  X
  5    10.60 VA-ONC HEAD NECK SHAREPOINT VIEW ABBREVIATION   element  X
      Finding: VIEW PROGRESS NOTE TEXT (REMINDER GENERAL FINDING)  X
  6    10.80 VA-ONC HEAD NECK PRESUMPTIVE CONDITIONS         element  X
      Finding: VIEW PROGRESS NOTE TEXT (REMINDER GENERAL FINDING)  X
  7    10.100 VA-ONC NPOP TESTING INFORMATION                 element  X
      Finding: *NONE*
  8    10.120 VA-ONCOLOGY PATHWAYS HEAD NECK PRIOR DATA    element  X
+      + Next Screen  - Prev Screen  ?? More Actions
DD  Dialog Details    DT  Dialog Text    IS  Install Selected
DF  Dialog Findings  DU  Dialog Usage  QU  Quit
DS  Dialog Summary   IA  Install All
Select Action: Next Screen// IA
```

At the **Select Action** prompt, type **IA** to install the dialog:

VA-ONCOLOGY HEAD NECK ORO/HYPO/NASOPHARYNX PATHWAYS

Select Action: Next Screen// **IA Install All**

Install reminder dialog and all components with no further changes: Y// **Yes**

```
Packed reminder dialog: VA-ONCOLOGY HEAD NECK ORO/HYPO/NASOPHARYNX PATHWAYS [NAT
VA-ONCOLOGY HEAD NECK ORO/HYPO/NASOPHARYNX PATHWAYS (reminder dialog) installed
Item  Seq. Dialog Findings                                     Type  Exists
  1    VA-ONCOLOGY HEAD NECK ORO/HYPO/NASOPHARYNX PATHWAYS  dialog  X
  2    10 VA-GP ONC HN ORO/HYPO/NASOPHARYNX MAIN              group  X
      Finding: *NONE*
  3    10.20 VA-ONC HN ORO/HYPO/NASOPHARYNX PATHWAY VERSION  element  X
      Finding: *NONE*
  4    10.40 VA-ONC PATHWAY GEN INSTRUCT/INTENDED USER       element  X
      Finding: VIEW PROGRESS NOTE TEXT (REMINDER GENERAL FINDING)  X
  5    10.60 VA-ONC HEAD NECK SHAREPOINT VIEW ABBREVIATION   element  X
      Finding: VIEW PROGRESS NOTE TEXT (REMINDER GENERAL FINDING)  X
  6    10.80 VA-ONC HEAD NECK PRESUMPTIVE CONDITIONS         element  X
      Finding: VIEW PROGRESS NOTE TEXT (REMINDER GENERAL FINDING)  X
  7    10.100 VA-ONC NPOP TESTING INFORMATION                 element  X
      Finding: *NONE*
  8    10.120 VA-ONCOLOGY PATHWAYS HEAD NECK PRIOR DATA    element  X
+      + Next Screen  - Prev Screen  ?? More Actions
DD  Dialog Details    DT  Dialog Text    IS  Install Selected
DF  Dialog Findings  DU  Dialog Usage  QU  Quit
DS  Dialog Summary   IA  Install All
Select Action: Next Screen// Q
```

After completing this dialog install, you will type **Q**.

**You will be prompted to install the 6th reminder dialog component
(VA-ONCOLOGY HEAD NECK ORAL CAVITY PATHWAYS)**

You will install all even though some components may have an X to indicate that they exist.

```
Packed reminder dialog: VA-ONCOLOGY HEAD NECK ORAL CAVITY PATHWAYS [NATIONAL DIA
```

Item	Seq.	Dialog Findings	Type	Exists
1		VA-ONCOLOGY HEAD NECK ORAL CAVITY PATHWAYS	dialog	
2	10	VA-GP ONC HN ORAL MAIN Finding: *NONE*	group	
3	10.20	VA-ONC HN ORAL CAVITY PATHWAY VERSION Finding: *NONE*	element	
4	10.40	VA-ONC PATHWAY GEN INSTRUCT/INTENDED USER Finding: VIEW PROGRESS NOTE TEXT (REMINDER GENERAL FINDING)	element	X
5	10.60	VA-ONC HEAD NECK SHAREPOINT VIEW ABBREVIATION Finding: VIEW PROGRESS NOTE TEXT (REMINDER GENERAL FINDING)	element	X
6	10.80	VA-ONC HEAD NECK PRESUMPTIVE CONDITIONS Finding: VIEW PROGRESS NOTE TEXT (REMINDER GENERAL FINDING)	element	X
7	10.100	VA-ONC NPOP TESTING INFORMATION Finding: *NONE*	element	X
8	10.120	VA-ONC HEAD AND NECK PATHWAYS PRIOR DATA	element	

```
+ + Next Screen - Prev Screen ?? More Actions
DD Dialog Details DT Dialog Text IS Install Selected
DF Dialog Findings DU Dialog Usage QU Quit
DS Dialog Summary IA Install All
Select Action: Next Screen// IA
```

At the **Select Action** prompt, type **IA** to install the dialog:

VA-ONCOLOGY HEAD NECK ORAL CAVITY PATHWAYS

Select Action: Next Screen// **IA Install All**

Install reminder dialog and all components with no further changes: Y// **Yes**

```
Packed reminder dialog: VA-ONCOLOGY HEAD NECK ORAL CAVITY PATHWAYS [NATIONAL DIA
VA-ONCOLOGY HEAD NECK ORAL CAVITY PATHWAYS (reminder dialog) installed from exch
```

Item	Seq.	Dialog Findings	Type	Exists
1		VA-ONCOLOGY HEAD NECK ORAL CAVITY PATHWAYS	dialog	X
2	10	VA-GP ONC HN ORAL MAIN Finding: *NONE*	group	X
3	10.20	VA-ONC HN ORAL CAVITY PATHWAY VERSION Finding: *NONE*	element	X
4	10.40	VA-ONC PATHWAY GEN INSTRUCT/INTENDED USER Finding: VIEW PROGRESS NOTE TEXT (REMINDER GENERAL FINDING)	element	X
5	10.60	VA-ONC HEAD NECK SHAREPOINT VIEW ABBREVIATION Finding: VIEW PROGRESS NOTE TEXT (REMINDER GENERAL FINDING)	element	X
6	10.80	VA-ONC HEAD NECK PRESUMPTIVE CONDITIONS Finding: VIEW PROGRESS NOTE TEXT (REMINDER GENERAL FINDING)	element	X
7	10.100	VA-ONC NPOP TESTING INFORMATION Finding: *NONE*	element	X
8	10.120	VA-ONC HEAD AND NECK PATHWAYS PRIOR DATA	element	X

```
+ + Next Screen - Prev Screen ?? More Actions
DD Dialog Details DT Dialog Text IS Install Selected
DF Dialog Findings DU Dialog Usage QU Quit
DS Dialog Summary IA Install All
Select Action: Next Screen// Q
```

After completing this dialog install, you will type **Q**.

```
Component                                     Category  Exists
Source:
Date Packed: 02/09/2024@06:12:19
Package Version: 2.0P65

Description:
The following Clinical Reminder items were selected for packing:
REMINDER DIALOG
  VA-ONCOLOGY HEAD NECK ORAL CAVITY PATHWAYS
  VA-ONCOLOGY HEAD NECK ORO/HYPO/NASOPHARYNX PATHWAYS
  VA-ONCOLOGY HEAD NECK LAR SUPRAGLOT/GLOTTIS/SUBGLOTTIS PATHWAYS
  VA-ONCOLOGY HEAD NECK LOCAL/REGIONAL RECURRENT DISEASE PATHWAYS
  VA-ONCOLOGY HEAD NECK METASTATIC OR RECURRENT DISEASE PATHWAYS
  VA-ONCOLOGY HEAD NECK UNKNOWN PRIMARY PATHWAYS

REMINDER TERM
  VA-REMINDER UPDATE 2 0 421
+      + Next Screen  - Prev Screen  ?? More Actions      >>>
IA  Install all Components          IS  Install Selected Component
Select Action: Next Screen// Q
```

You will then be returned to this screen. At the **Select Action** prompt, type **Q**.

Install complete.

Post Installation

1. **Make the dialogs available to be attached to Personal or Shared templates and/or to be able to attach to progress note titles.**

From the Reminders Manager Menu:

Select Reminder Managers Menu Option: **CP CPRS Reminder Configuration**

- CA Add/Edit Reminder Categories
- CL CPRS Lookup Categories
- CS CPRS Cover Sheet Reminder List
- MH Mental Health Dialogs Active
- PN Progress Note Headers
- RA Reminder GUI Resolution Active
- TIU TIU Template Reminder Dialog Parameter**
- DL Default Outside Location
- PT Position Reminder Text at Cursor

Select CPRS Reminder Configuration Option: **TIU Template Reminder Dialog Parameter**

Reminder Dialogs allowed as Templates may be set for the following:

- 1 User USR [choose from NEW PERSON]
- 3 Service SRV [choose from SERVICE/SECTION]
- 4 Division DIV [choose from INSTITUTION]
- 5 System SYS [NATREM.FO-SLC.MED.VA.GOV]

Enter selection: **5** *Choose the appropriate number for your site. Your site may do this by System or other levels. The example below uses SYSTEM level*

Setting Reminder Dialogs allowed as Templates for System:

Select Display Sequence: **?**

- 148 VA-VETERANS CHOICE NOTE
- 149 VA-TBI SCREENING

*When you type a question mark above, you will see the list of #'s (with dialogs) that are already taken. Choose a number **NOT** on this list. For this example, looking above I see the number 150 is not present, so I will use 150.*

Select Display Sequence: **150**

Are you adding 150 as a new Display Sequence? Yes// **Y YES**

Display Sequence: 150// **<Enter>** 150

Clinical Reminder Dialog: **VA-ONCOLOGY HEAD NECK ORAL CAVITY PATHWAYS**
then **<enter>**

reminder dialog NATIONAL

OK? Yes// **<Enter>** (Yes)

Select Display Sequence: **151**

Are you adding 151 as a new Display Sequence? Yes// **Y YES**

Display Sequence: 151// **<Enter>** 151

Clinical Reminder Dialog: **VA-ONCOLOGY HEAD NECK ORO/HYPO/NASOPHARYNX PATHWAYS** then **<enter>**

reminder dialog NATIONAL

OK? Yes// **<Enter>** (Yes)

Select Display Sequence: **152**
Are you adding 153 as a new Display Sequence? Yes// **Y YES**
Display Sequence: 153// **<Enter>** 152
Clinical Reminder Dialog: **VA-ONCOLOGY HEAD NECK LAR SUPRAGLOT/GLOTTIS/SUBGLOTTIS PATHWAYS** then **<enter>**
reminder dialog NATIONAL
OK? Yes// **<Enter>** (Yes)

Select Display Sequence: **152**
Are you adding 153 as a new Display Sequence? Yes// **Y YES**
Display Sequence: 153// **<Enter>** 152
Clinical Reminder Dialog: **VA-ONCOLOGY HEAD NECK LOCAL/REGIONAL RECURRENT DISEASE PATHWAYS** then **<enter>**
reminder dialog NATIONAL
OK? Yes// **<Enter>** (Yes)

Select Display Sequence: **152**
Are you adding 153 as a new Display Sequence? Yes// **Y YES**
Display Sequence: 153// **<Enter>** 152
Clinical Reminder Dialog: **VA-ONCOLOGY HEAD NECK METASTATIC OR RECURRENT DISEASE PATHWAYS** then **<enter>**
reminder dialog NATIONAL
OK? Yes// **<Enter>** (Yes)

Select Display Sequence: **152**
Are you adding 153 as a new Display Sequence? Yes// **Y YES**
Display Sequence: 153// **<Enter>** 152
Clinical Reminder Dialog: **VA-ONCOLOGY HEAD NECK UNKNOWN PRIMARY PATHWAYS** then **<enter>**
reminder dialog NATIONAL
OK? Yes// **<Enter>** (Yes)

2. Setup of specific Note titles.

You will need to create six new note titles for these templates, as follows:

ONCOLOGY HEAD NECK ORAL CAVITY PATHWAYS
ONCOLOGY HEAD NECK ORO/HYPO/NASOPHARYNX PATHWAYS
ONCOLOGY HEAD NECK LARYNX SUPRA/GLOTTIS/SUBGLOTTIS PATHWAYS
ONCOLOGY HEAD NECK LOCAL/REGIONAL RECURRENT DISEASE PATHWAYS
ONCOLOGY HEAD NECK METASTATIC OR RECURRENT DISEASE PATHWAYS
ONCOLOGY HEAD NECK UNKNOWN PRIMARY PATHWAYS

All the note titles above are to be mapped to the following VHA Enterprise Standard Title:
HEMATOLOGY AND ONCOLOGY NOTE

Note: Comprehensive information on Creating Document Definitions can be found beginning on page 47 of the [TIU/ASU Implementation Guide](#)

3. Associate the new reminder dialogs with the note titles in CPRS

To do this, go to Template Editor, then Document Titles, select the appropriate folder (if applicable), and choose **New Template** (top right-hand corner).

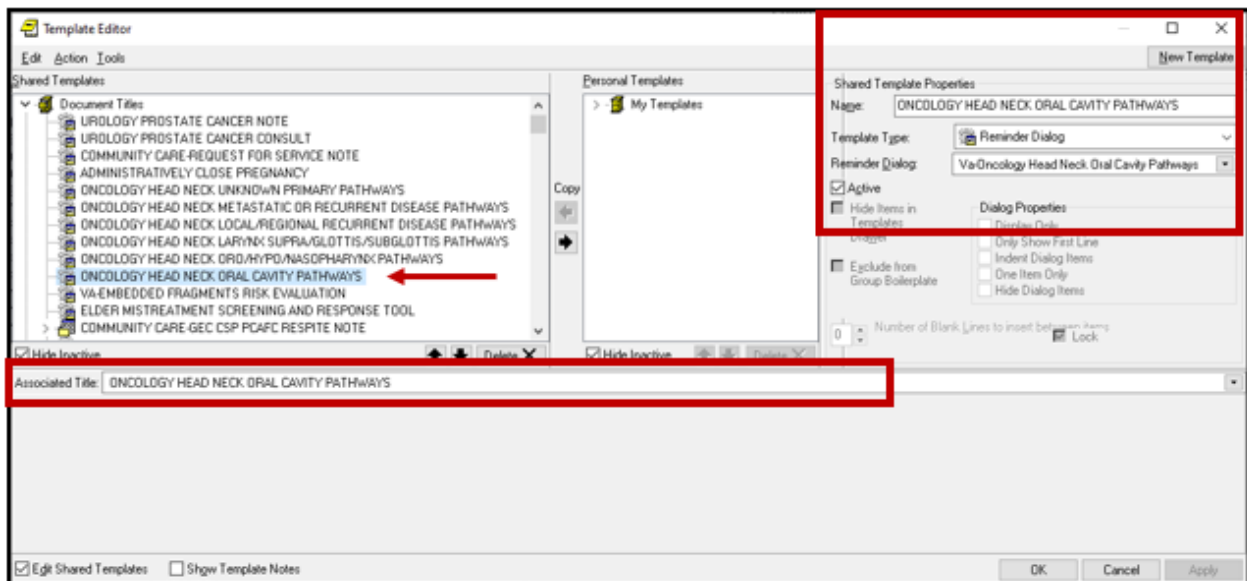
a. Type in the following information:

Name: **ONCOLOGY HEAD NECK ORAL CAVITY PATHWAYS**

Template Type: Reminder Dialog

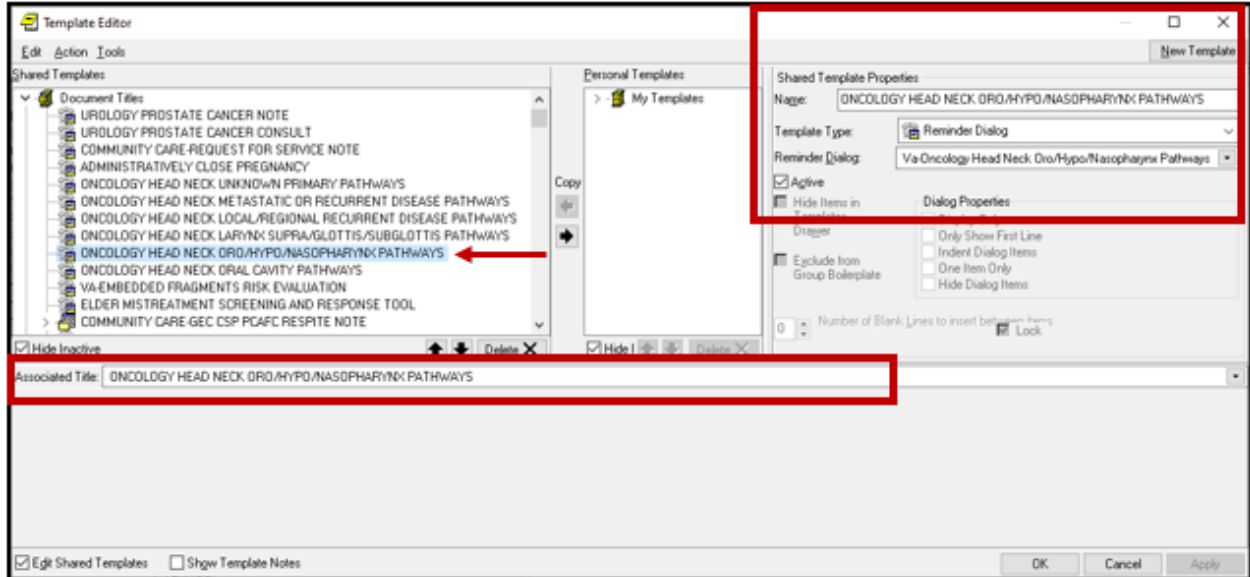
Reminder Dialog: **VA-ONCOLOGY HEAD NECK ORAL CAVITY PATHWAYS**

Next, type in the Associated Title, which in this case is **ONCOLOGY HEAD NECK ORAL CAVITY PATHWAYS** and click Apply.

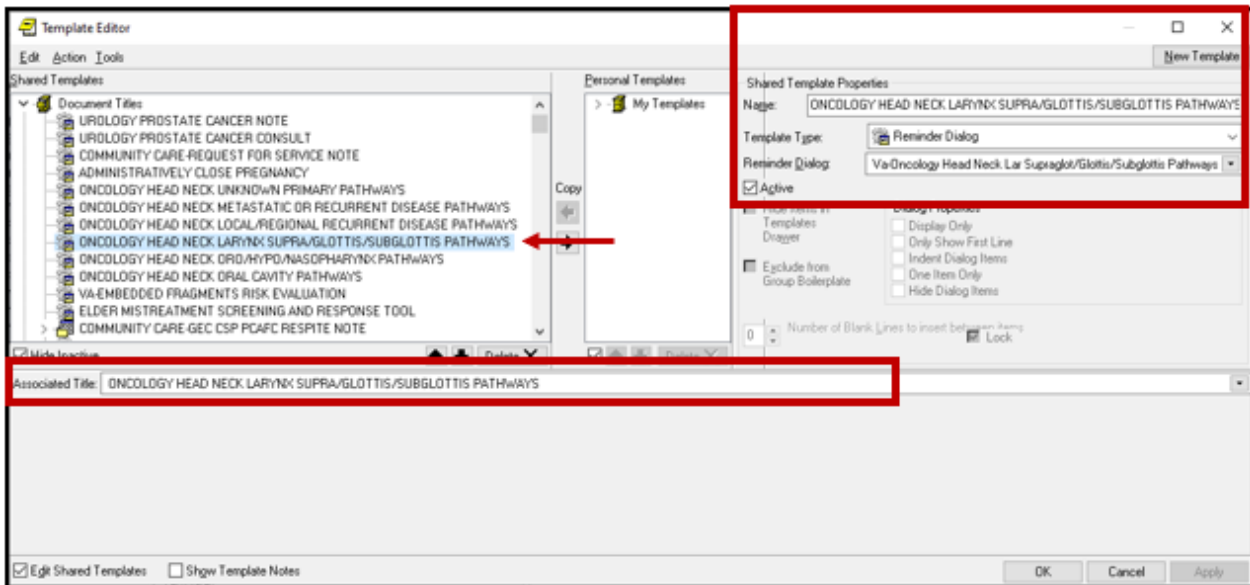


(continue on next page)

- b. Name: **ONCOLOGY HEAD NECK ORO/HYPO/NASOPHARYNX PATHWAYS**
 Template Type: Reminder Dialog
 Reminder Dialog: **VA-ONCOLOGY HEAD NECK ORO/HYPO/NASOPHARYNX PATHWAYS**
 Associated Title: **ONCOLOGY HEAD NECK ORO/HYPO/NASOPHARYNX PATHWAYS**



- c. Name: **ONCOLOGY HEAD NECK LARYNX SUPRA/GLOTTIS/SUBGLOTTIS PATHWAYS**
 Template Type: Reminder Dialog
 Reminder Dialog: **VA-ONCOLOGY HEAD NECK LAR SUPRAGLOT/GLOTTIS/SUBGLOTTIS PATHWAYS**
 Associated Title: **ONCOLOGY HEAD NECK LARYNX SUPRA/GLOTTIS/SUBGLOTTIS PATHWAYS**

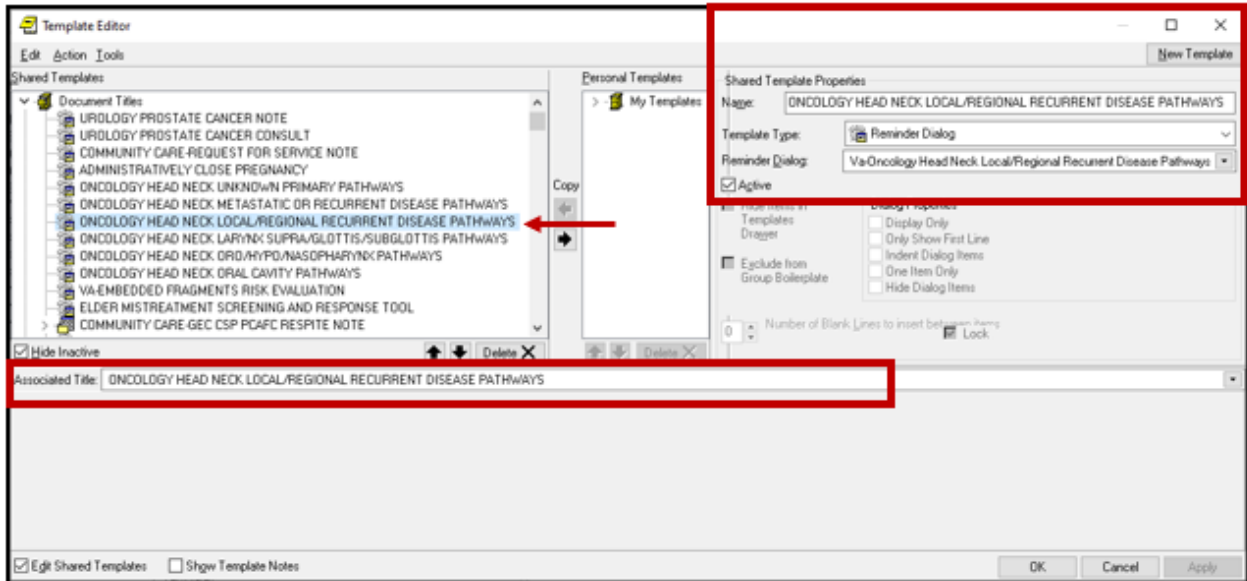


- d. Name: **ONCOLOGY HEAD NECK LOCAL/REGIONAL RECURRENT DISEASE PATHWAYS**

Template Type: Reminder Dialog

Reminder Dialog: VA-ONCOLOGY HEAD NECK LOCAL/REGIONAL RECURRENT DISEASE PATHWAYS

Associated Title: ONCOLOGY HEAD NECK LOCAL/REGIONAL RECURRENT DISEASE PATHWAYS

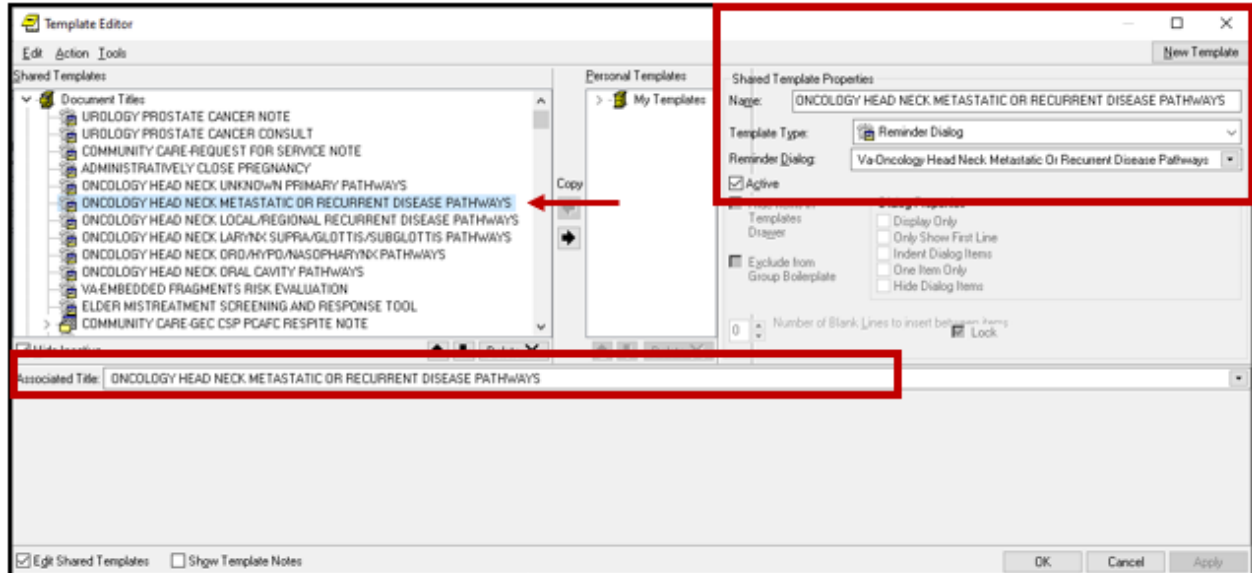


e. Name: ONCOLOGY HEAD NECK METASTATIC OR RECURRENT DISEASE PATHWAYS

Template Type: Reminder Dialog

Reminder Dialog: VA-ONCOLOGY HEAD NECK MESTATIC OR RECURRENT DISEASE PATHWAYS

Associated Title: ONCOLOGY HEAD NECK METASTATIC OR RECURRENT DISEASE PATHWAYS

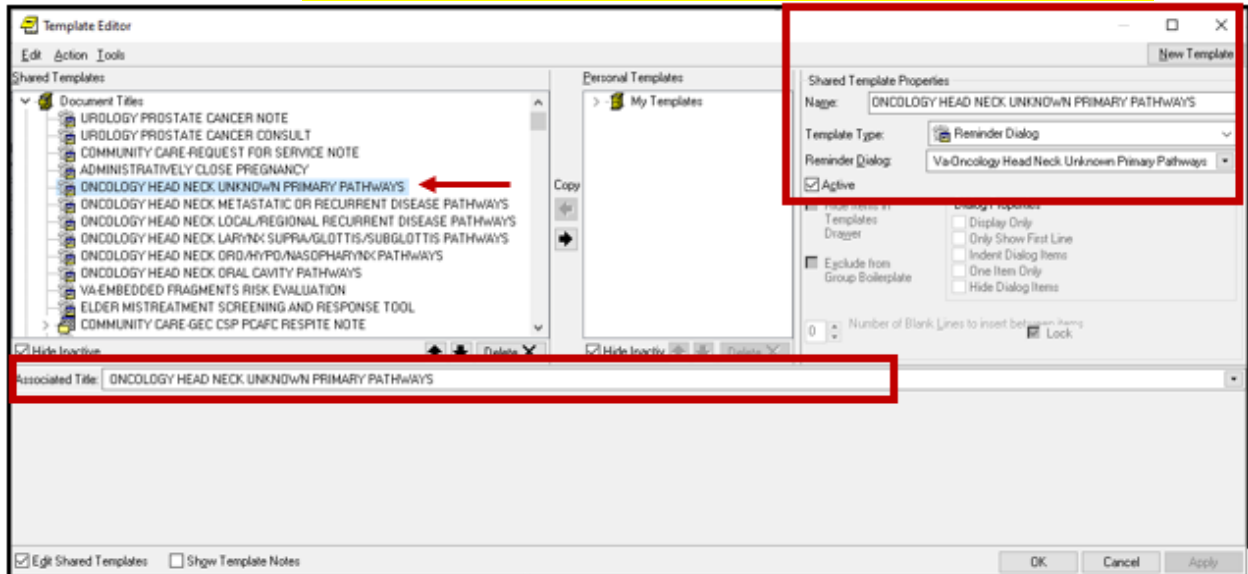


f. Name: ONCOLOGY HEAD NECK UNKNOWN PRIMARY PATHWAYS

Template Type: Reminder Dialog

Reminder Dialog: **VA-ONCOLOGY HEAD NECK UNKNOWN PRIMARY PATHWAYS**

Associated Title: **ONCOLOGY HEAD NECK UNKNOWN PRIMARY PATHWAYS**



4. Associate the new six (6) reminder dialogs with a shared template in CPRS

To do this, go to Template Editor, then Shared Templates, select the appropriate folder (if applicable), and choose **New Template** (top right-hand corner).

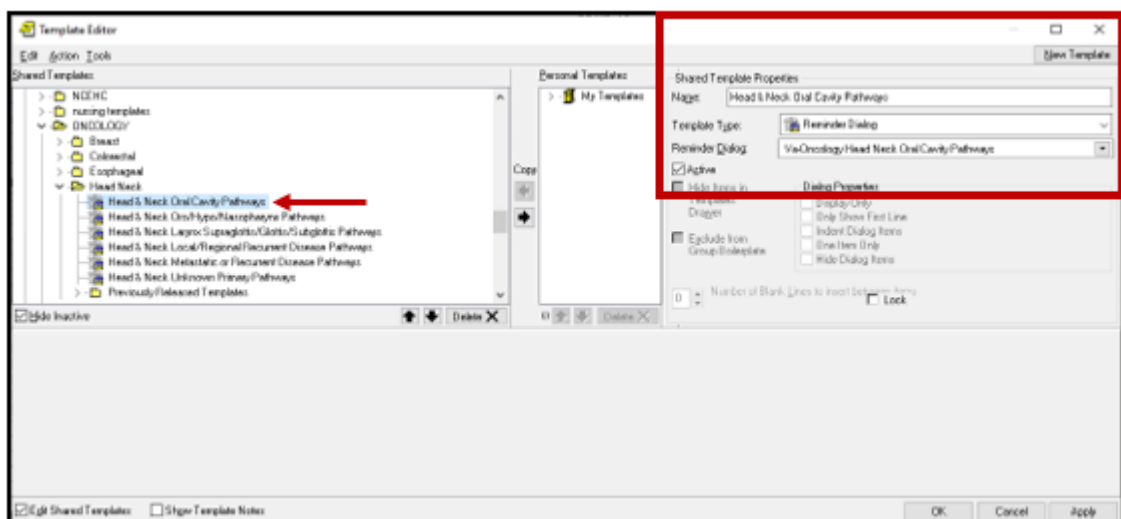
a. Type in the following information:

Name: **Head & Neck Oral Cavity Pathways**

Template Type: Reminder Dialog

Reminder Dialog: **VA-ONCOLOGY HEAD NECK ORAL CAVITY PATHWAYS**

Next, select Apply.



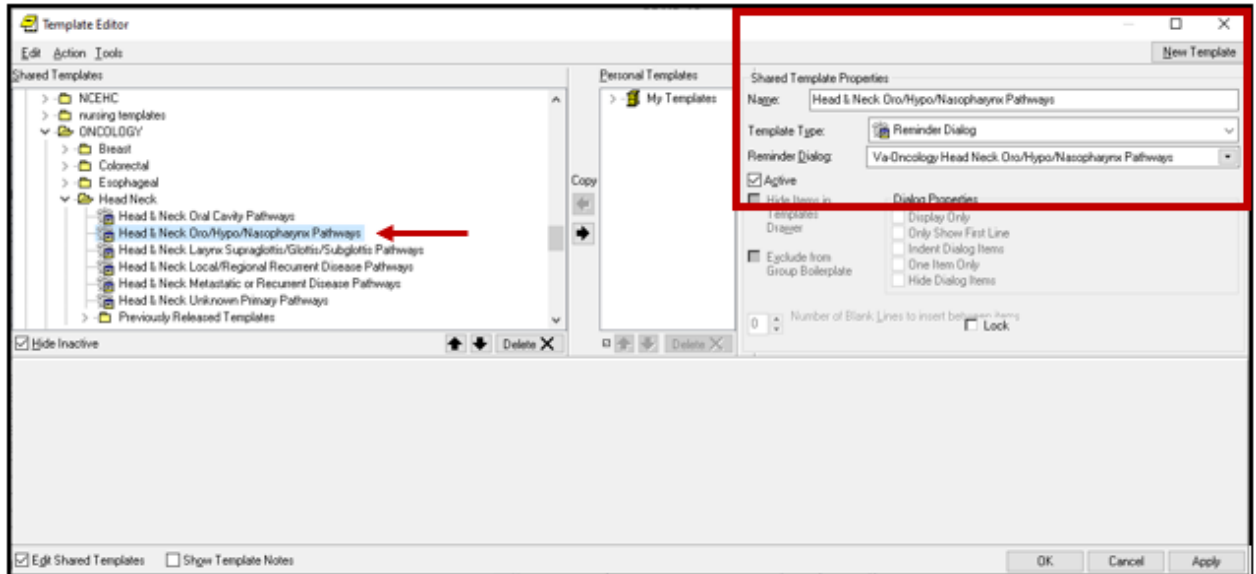
b. Type in the following information:

Name: **Head & Neck Oro/Hypo/Nasopharynx Pathways**

Template Type: Reminder Dialog

Reminder Dialog: **VA-ONCOLOGY HEAD NECK ORO/HYPO/NASOPHARYNX PATHWAYS**

Next, select Apply.



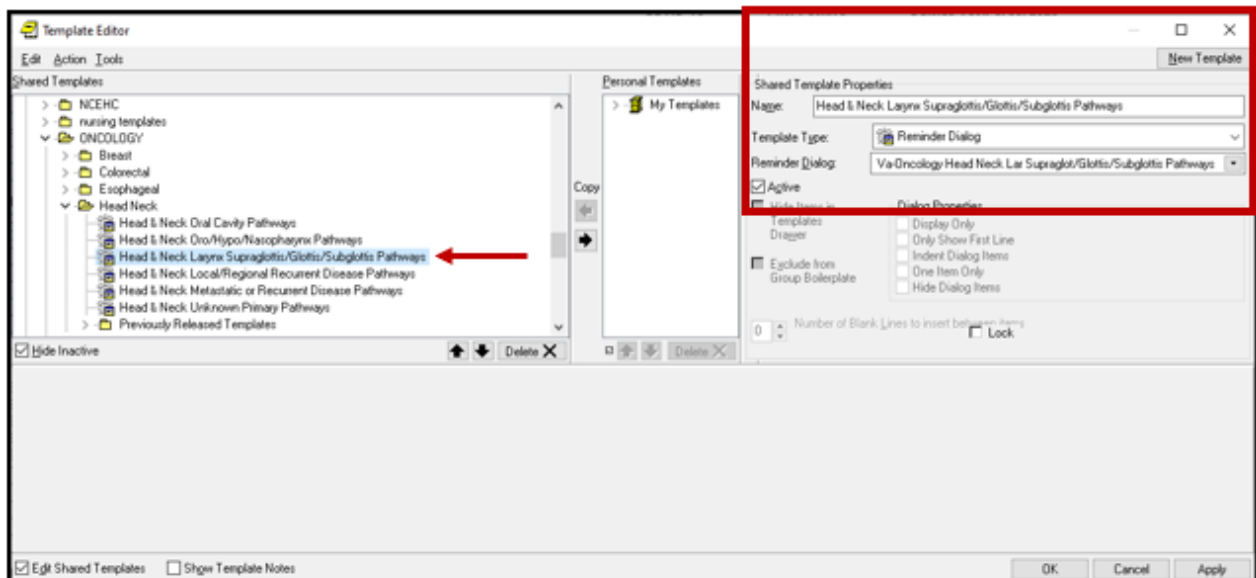
c. Type in the following information:

Name: **Head & Neck Larynx Supraglottis/Glottis/Subglottis Pathways**

Template Type: Reminder Dialog

Reminder Dialog: **VA-ONCOLOGY HEAD NECK LAR SUPRAGLOT/GLOTTIS/SUBGLOTTIS PATHWAYS**

Next, select Apply.



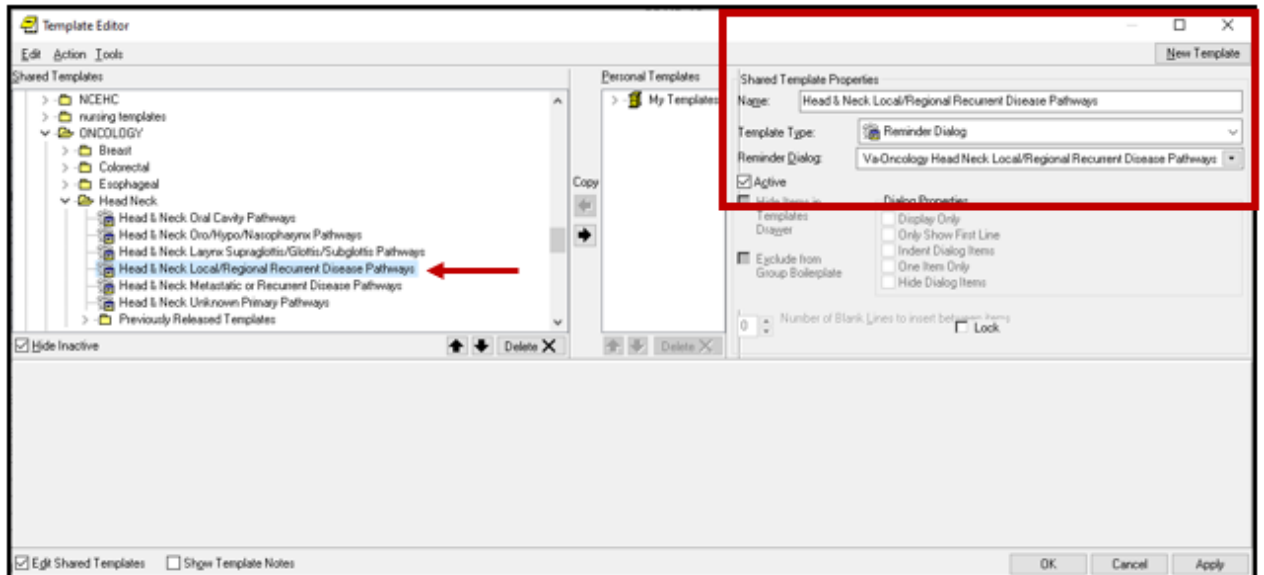
d. Type in the following information:

Name: **Head & Neck Local/Regional Recurrent Disease Pathways**

Template Type: Reminder Dialog

Reminder Dialog: **VA-ONCOLOGY HEAD NECK LOCAL/REGIONAL RECURRENT DISEASE PATHWAYS**

Next, select Apply.



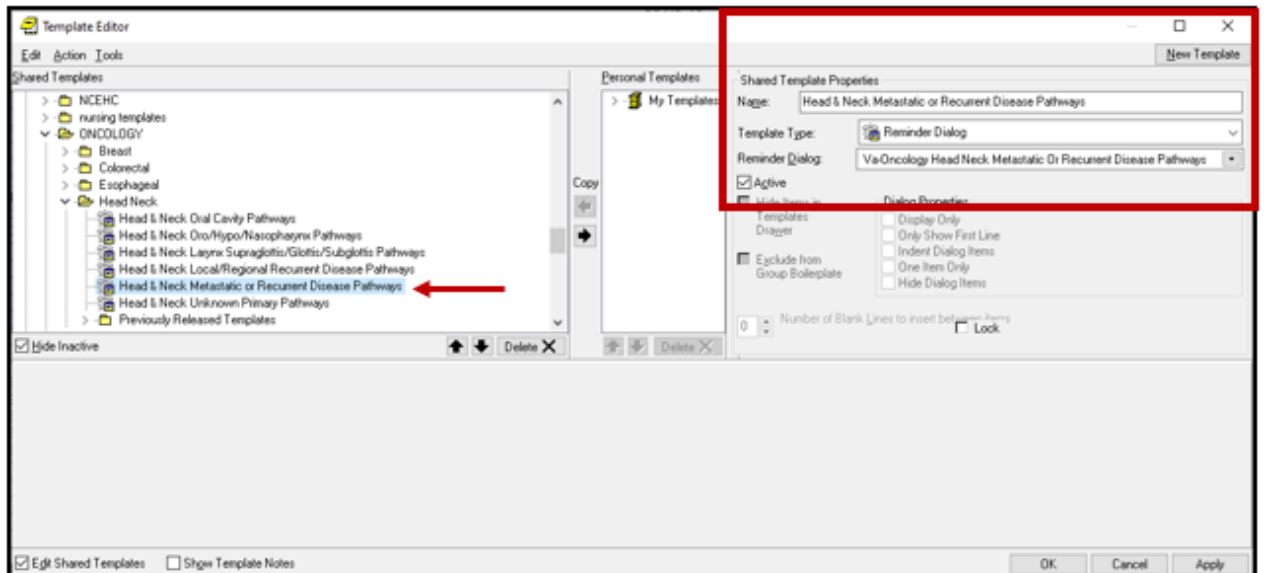
e. Type in the following information:

Name: **Head & Neck Metastatic or Recurrent Disease Pathways**

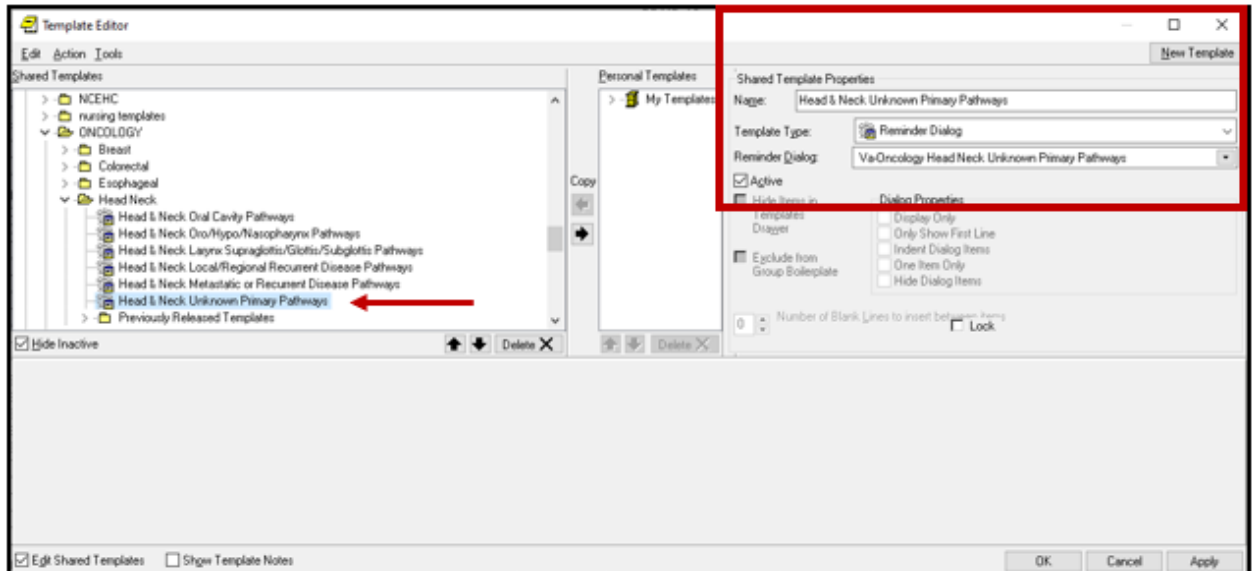
Template Type: Reminder Dialog

Reminder Dialog: **VA-ONCOLOGY HEAD NECK METASTATIC OR RECURRENT DISEASE PATHWAYS**

Next, select Apply.



- f. Type in the following information:
 Name: **Head & Neck Unknown Primary Pathways**
 Template Type: Reminder Dialog
 Reminder Dialog: **VA-ONCOLOGY HEAD NECK UNKNOWN PRIMARY PATHWAYS**
 Next, select Apply.



NOTE: Ensure you set up all National Oncology Program Office released-templates in an Oncology Shared Templates folder.

The VISTA names listed below and correspond to the screen shot of how the shared template should be set up. These templates should be in a shared template drawer and attached to a note title (if wanted at your site). The exact note titles may vary at each site based on site specific naming conventions (see install guides for suggestions). These templates should be set up and available for use at your site (unless you do not provide any oncology services and have a waiver).

Recently added templates are bolded.

VA-ONCOLOGY BREAST CANCER
 VA-ONCOLOGY MDC BREAST
 VA-ONCOLOGY TREATMENT PLAN BREAST
 VA-ONCOLOGY TREATMENT SUMMARY BREAST

VA-ONCOLOGY COLORECTAL
 VA-ONCOLOGY MDC COLORECTAL
 VA-ONCOLOGY TREATMENT PLAN COLORECTAL
 VA-ONCOLOGY TREATMENT SUMMARY COLORECTAL

VA-ONCOLOGY HEAD NECK ORAL CAVITY PATHWAYS*
VA-ONCOLOGY HEAD NECK ORO/HYPO/NASOPHARYNX PATHWAYS*
VA-ONCOLOGY HEAD NECK LAR SUPRAGLOT/GLOTTIS/SUBGLOTTIS PATHWAYS*
VA-ONCOLOGY HEAD NECK LOCAL/REGIONAL RECURRENT DISEASE PATHWAYS*

VA-ONCOLOGY HEAD NECK METASTATIC OR RECURRENT DISEASE PATHWAYS*
VA-ONCOLOGY HEAD NECK UNKNOWN PRIMARY PATHWAYS*

VA-ONCOLOGY HEAD NECK
VA-ONCOLOGY MDC HEAD NECK
VA-ONCOLOGY TREATMENT PLAN HEAD NECK
VA-ONCOLOGY TREATMENT SUMMARY HEAD NECK

VA-ONCOLOGY ESOPH CANCER IVB ADC PATHWAYS*
VA-ONCOLOGY ESOPH CANCER ADC+SCC PATHWAYS*
VA-ONCOLOGY ESOPH CANCER IVB SCC PATHWAYS*

VA-ONCOLOGY KIDNEY CANCER PATHWAYS*

VA-ONCOLOGY LUNG EARLY STAGE PATHWAYS*
VA-ONCOLOGY LUNG LOCALLY ADVANCED PATHWAYS*
VA-ONCOLOGY LUNG FIRST LINE METS STAGE IV PATHWAYS*
*VA-ONCOLOGY LUNG RELAPSE PATHWAYS***

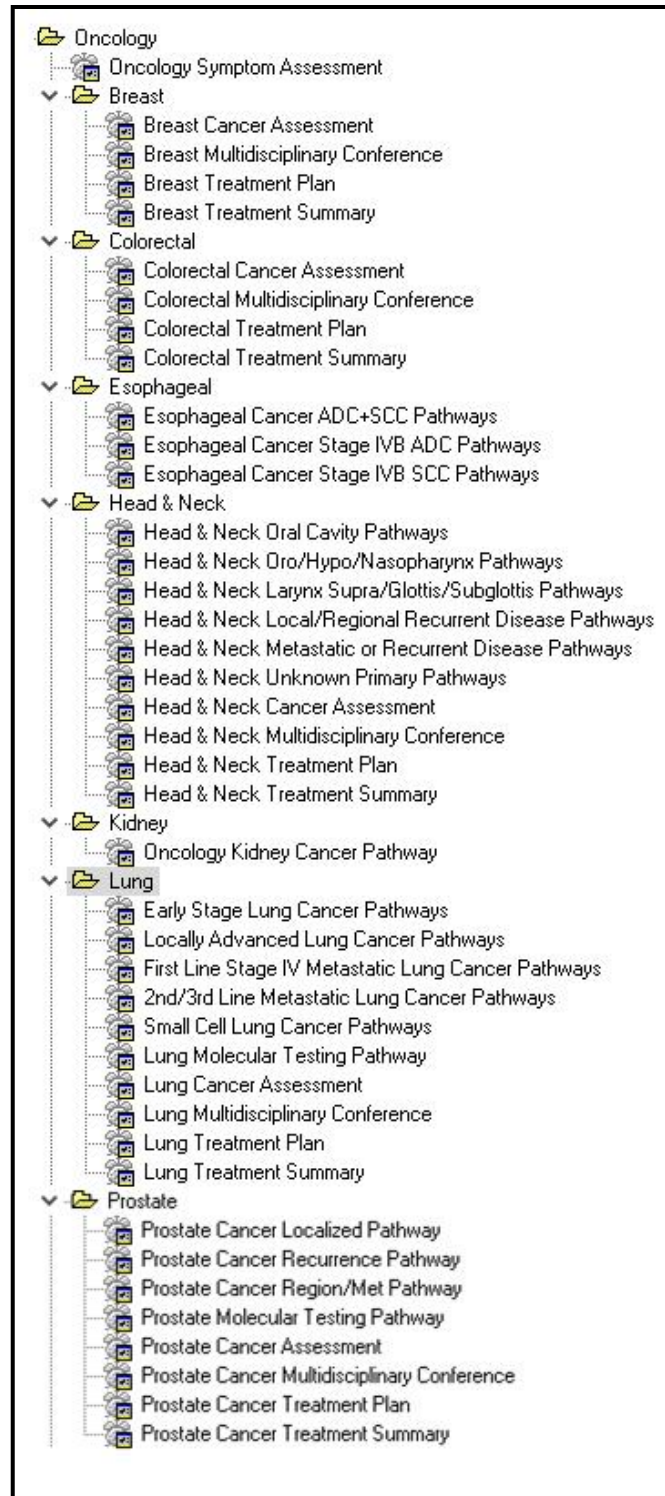
- updated dialog text to 2nd/3rd Line Metastatic Lung Cancer Pathways

VA-ONCOLOGY LUNG SCLC PATHWAYS*
VA-ONCOLOGY LUNG PATHWAY*
VA-ONCOLOGY LUNG
VA-ONCOLOGY MDC THORACIC
VA-ONCOLOGY TREATMENT PLAN LUNG
VA-ONCOLOGY TREATMENT SUMMARY LUNG

VA-ONCOLOGY PRCA LOCALIZED PATHWAYS*
VA-ONCOLOGY PRCA RECURRENCE PATHWAYS*
VA-ONCOLOGY PRCA REGION/MET PATHWAYS*
VA-ONCOLOGY PRCA PATHWAY *
VA-ONCOLOGY PROSTATE
VA-ONCOLOGY MDC PROSTATE
VA-ONCOLOGY TREATMENT PLAN PROSTATE
VA-ONCOLOGY TREATMENT SUMMARY PROSTATE
VA-ONCOLOGY SYMPTOM ASSESSMENT SCALE

*Pathways templates MUST be utilized. They can be in the shared templates (as listed in the example below) or be attached to note titles. Please do not use the VISTA names, as they are not always intuitive to the providers. Use the suggested names below in your shared templates.

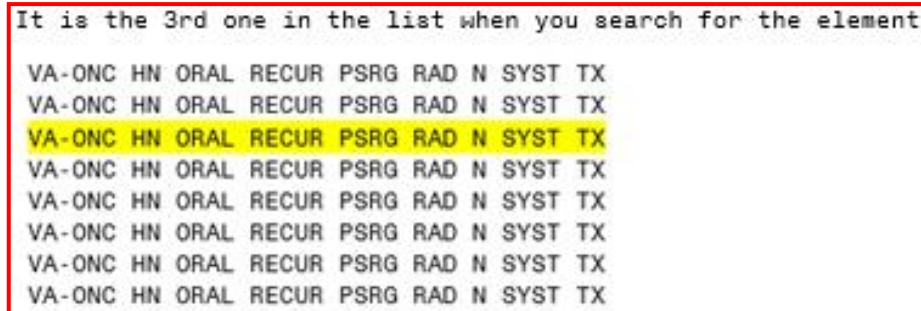
(see screenshot on the next page)



These templates were released in patch PXRМ*2.0*38, Update 20, Update 26, Update 106, Update 176, Update 246, Update 287, and Update 341, Update 367, Update 407.

Install guides can be found at: REDACTED

Element: **VA-ONC HN ORAL RECUR PSRG RAD N SYST TX CAND N OBS/PALL**
DISABLE:
CLASS: NATIONAL//
FINDING ITEM:
Additional findings:
Select ADDITIONAL FINDING: Enter "Q.", then name of local consult quick order



Element: **VA-ONC HN META/RECUR SYS TX CAND NO PALLIATIVE CARE**
DISABLE:
CLASS: NATIONAL//
FINDING ITEM:
Additional findings:
Select ADDITIONAL FINDING: Enter "Q.", then name of local consult quick order

- (Optional) Your site may choose to have a menu or an order set (for **EBV (Epstein Barr Virus) lab, PET/CT, MRI to include skull base**) added as an additional finding to the following element:

Element: **VA-ONC HN NASOPHARYNX T1 EBV/PET/CT/MRI SKULL BASE**
DISABLE:
CLASS: NATIONAL//
FINDING ITEM:
Additional findings:
Select ADDITIONAL FINDING: Enter "Q.", then name of local consult quick order
Consult with your facility LIM / Radiology ADPAC if you are unsure what to add

- (Optional) Your site may choose to have a menu or an order set (for **HPV (Human Papilloma Virus) and EBV (Epstein Barr Virus) labs, PET/CT**) added as an additional finding to the following element:

Element: **VA-ONC HN UNK PRIM HPV/EBV, PET/CT TESTING ORDERED**
DISABLE:
CLASS: NATIONAL//
FINDING ITEM:
Additional findings:
Select ADDITIONAL FINDING: Enter "Q.", then name of local consult quick order
Consult with your facility LIM / Radiology ADPAC if you are unsure what to add

8. Map your site's ENT Consult quick order as an additional finding to the following two (2) elements:

Element: **VA-ONC HN UNK PRIM DIRECT BIOPSY CONSULT ENT**

DISABLE:

CLASS: NATIONAL//

FINDING ITEM:

Additional findings:

Select ADDITIONAL FINDING: Enter "Q.", then name of local consult quick order

Element: **VA-ONC HN UNK PRIM TONSILLECTOMY CONSULT SURG**

DISABLE:

CLASS: NATIONAL//

FINDING ITEM:

Additional findings:

Select ADDITIONAL FINDING: Enter "Q.", then name of local consult quick order