

**Clinical Procedures (CP) Console (MD\*1.0\*86)**  
**Network Deployment, Installation, Back-Out, and  
Rollback Guide**



**April 2024**

**Department of Veterans Affairs (VA)**

**Office of Information and Technology (OIT)**

## Revision History

Date	Description	Author
November 2023	Initial Release	HPS Clinical Sustainment Team
April 2024	Updated to reflect V2 and SHOWCERTS	HPS Clinical Sustainment Team

## Artifact Rationale

This document describes the Deployment, Installation, Back-out, and Rollback Plan for new products going into the VA Enterprise. The plan includes information about system support, issue tracking, escalation processes, and roles and responsibilities involved in all those activities. Its purpose is to provide clients, stakeholders, and support personnel with a smooth transition to the new product or software, and should be structured appropriately, to reflect these procedures at a single or at multiple locations.

Per the Veteran-focused Integrated Process (VIP) Guide, the Deployment, Installation, Back-out, and Rollback Plan is required to be completed prior to Critical Decision Point #2 (CD #2), with the expectation that it will be updated throughout the lifecycle of the project for each build, as needed.

# Table of Contents

<b>1.</b>	<b>Introduction .....</b>	<b>1</b>
1.1.	Purpose.....	1
1.2.	Dependencies .....	1
1.3.	Constraints .....	1
<b>2.</b>	<b>Roles and Responsibilities .....</b>	<b>1</b>
<b>3.</b>	<b>Deployment.....</b>	<b>2</b>
3.1.	Timeline .....	3
3.2.	Site Readiness Assessment.....	3
3.2.1.	Deployment Topology (Targeted Architecture).....	3
3.2.2.	Site Information (Locations, Deployment Recipients).....	3
3.2.3.	Site Preparation .....	3
3.3.	Resources .....	3
3.3.4.	Facility Specifics.....	3
3.3.5.	Hardware.....	3
3.3.6.	Software.....	4
3.3.7.	Communications.....	4
3.3.7.1.	Deployment/Installation/Back-Out Checklist.....	4
<b>4.</b>	<b>Installation .....</b>	<b>4</b>
4.1.	Pre-installation and System Requirements .....	4
4.2.	Platform Installation and Preparation .....	4
4.3.	Download and Extract Files.....	4
4.4.	Database Creation.....	5
4.5.	Installation Scripts .....	5
4.6.	Cron Scripts .....	5
4.7.	Access Requirements and Skills Needed for the Installation .....	5
4.8.	Installation Procedure .....	5
4.8.8.	MD*1.0*86 VistA Installation.....	5
4.8.9.	CP Console v1.0.86.2 GUI Installation.....	6
4.8.9.2.	CP Console GUI Methods of Installation .....	6
4.9.	Installation Verification Procedure .....	9
4.10.	System Configuration.....	9
4.11.	Database Tuning .....	9
<b>5.</b>	<b>Back-Out Procedure .....</b>	<b>10</b>
5.1.	Back-Out Strategy .....	10
5.2.	Back-Out Considerations.....	10
5.2.10.	Load Testing .....	10
5.2.11.	User Acceptance Testing.....	10
5.3.	Back-Out Criteria.....	10
5.4.	Back-Out Risks .....	10

5.5.	Authority for Back-Out .....	10
5.6.	Back-Out Procedure .....	11
5.7.	Back-out Verification Procedure.....	11
6.	Rollback Procedure .....	12
6.1.	Rollback Considerations.....	12
6.2.	Rollback Criteria .....	12
6.3.	Rollback Risks .....	12
6.4.	Authority for Rollback .....	12
6.5.	Rollback Procedure .....	12
6.6.	Rollback Verification Procedure .....	12

## List of Tables

Table 1: Roles and Responsibilities.....	2
Table 2: Files to be Downloaded.....	5
Table 3: HPS CLIN Contacts.....	11

## List of Figures

Figure 1: How to Create Shortcut.....	8
Figure 2: CP Console Shortcut Properties.....	9

# 1. Introduction

This document describes how to deploy and install the CP Console v1.0.86.2, as well as how to back-out the product and rollback to a previous version or data set. This document is a companion to the project charter and management plan for this effort. In cases where a non-developed COTS product is being installed, the vendor provided User and Installation Guide may be used, but the Back-Out Recovery strategy still needs to be included in this document.

## 1.1. Purpose

The purpose of this plan is to provide a single, common document that describes how, when, where, and to whom the CP Console v1.0.86.2 will be deployed and installed, as well as how it is to be backed out and rolled back, if necessary. The plan also identifies resources, communications plan, and rollout schedule. Specific instructions for installation, back-out, and rollback are included in this document.

## 1.2. Dependencies

The CP Console v1.0.86.2 project is for installation on a fully patched VistA system. There is also a Graphical User Interface (GUI) component that should be running on a Windows system.

## 1.3. Constraints

CP Console v1.0.86.2 and the associated M patch (if applicable) are expected to be installed on existing VistA platforms. The hardware may reside at local or regional data centers. CP Console v1.0.86.2 utilizes existing, nationally released security controls to control access.

# 2. Roles and Responsibilities

No one single entity oversees decision making for deployment, installation, back out and rollback of CP Console v1.0.86.2. The Release Agent and Application Coordinators under the Veterans in Process will approve deployment and install from an OIT perspective. If an issue with the software arises, then the facility CIO and other site leadership will meet along with input from Patient Safety and Health Product Support to initiate a back out and rollback decision of the software along with the IT Operations and Services personnel. The following table provides CP Console v1.0.86.2 project information.

**Table 1: Roles and Responsibilities**

<b>Team</b>	<b>Phase / Role</b>	<b>Tasks</b>
IT Operations and Services personnel	Deployment	Plan and schedule deployment (including orchestration with vendors)
IT Operations and Services personnel	Deployment	Determine and document the roles and responsibilities of those involved in the deployment.
Site personnel.	Deployment	Test for operational readiness
IT Operations and Services personnel The IT support will need to include person(s) to install the KIDS build as well as the personnel to deploy the GUI – which may be done on each machine, a shared network and/or the Citrix access gateway	Deployment	Execute deployment
IT Operations and Services personnel. The IT support will need to include person(s) to install the KIDS build as well as the personnel to deploy the GUI – which may be done on each machine, a shared network and/or the Citrix access gateway	Installation	Plan and schedule installation
N/A – will work under the VistA ATO and security protocols.	Installation	Ensure authority to operate and that certificate authority security documentation is in place
N/A – no equipment is being added.	Installation	Validate through facility POC to ensure that IT equipment has been accepted using asset inventory processes
N/A – no new functionality is being introduced.	Installations	Coordinate training
Facility CIO, IT Operations, and Services personnel	Back-out	Confirm availability of back-out instructions and back-out strategy (what are the criteria that trigger a back-out)
Hardware and System support – no changes. Software support will be the HPS Clinical Sustainment team.	Post Deployment	Hardware, Software and System Support

### 3. Deployment

The deployment is planned as a standard VistA National Patch Module patch rollout. Once approval has been given to nationally release, the patch MD\*1.0\*86 will be

released from the National Patch Module. At this point, it will be available for installation and deployment at all sites.

Scheduling of test/mirror installs, testing and deployment to production will be at the site's discretion. It is anticipated there will be a 30-day compliance period.

## **3.1. Timeline**

There is no timeline specifically for deployment. This is considered a maintenance release and installation will be at the site's discretion, within the constraints of the compliance period for the release.

## **3.2. Site Readiness Assessment**

N/A.

### **3.2.1. Deployment Topology (Targeted Architecture)**

CP Console v1.0.86.2 will be deployed to each VistA instance. That will include local sites as well as regional data processing centers. The executable will also be deployed to the Citrix Access Gateway.

### **3.2.2. Site Information (Locations, Deployment Recipients)**

The initial deployment will be to IOC sites for verification of functionality. Once that testing is completed and approval is given for national release, CP Console v1.0.86.2 (MD\*1.0\*86) will be deployed to all VistA systems.

The Production (IOC) testing sites are:

- LTC Charles S. Kettles VA Medical Center (Ann Arbor, MI)
- Minneapolis VA Health Care System (Minneapolis, MN)

### **3.2.3. Site Preparation**

There is no special preparation required for CP Console v1.0.86.2. A fully patched VistA system is the only requirement.

## **3.3. Resources**

N/A

### **3.3.4. Facility Specifics**

N/A

### **3.3.5. Hardware**

N/A

### **3.3.6. Software**

N/A

### **3.3.7. Communications**

Service Delivery and Engineering (SDE) Field Implementation Services will be sending out an Action Item and National Change Order prior to the release of CP Console v1.0.86.2 advising them of the upcoming release.

CP Console v1.0.86.2 will be deployed using the standard method of patch release from the National Patch Module rather than a phased deployment. When patch MD\*1.0\*86 is released, the National Patch Module will send a notification to all the personnel who have subscribed to those notifications.

#### **3.3.7.1. Deployment/Installation/Back-Out Checklist**

The deployment and installation will be performed by site support personnel once it is nationally released.

## **4. Installation**

### **4.1. Pre-installation and System Requirements**

CP Console v1.0.86.2 assumes a fully patched Vista system.

### **4.2. Platform Installation and Preparation**

[Vista] This patch should be loaded during non-peak hours to minimize disruption to users. Installation will take less than 5 minutes. Users may remain on the system.

[GUI] The time to deploy the GUI will depend on which method the site utilizes for running the executable (network share, Citrix, individual workstation installs, etc.)

### **4.3. Download and Extract Files**

CP Console v1.0.86.2 is being released as a PackMan Message distributed through the National Patch Module combined with a .ZIP file containing the GUI file(s).

Files can be obtained from the SOFTWARE directory:

<https://download.vista.med.va.gov/index.html/SOFTWARE/>

Documentation can also be found on the VA Software Documentation Library at:

<https://www.va.gov/vdl/application.asp?appid=139>



**Table 2: Files to be Downloaded.**

<b>File Name</b>	<b>File Contents</b>	<b>Download Format</b>
MD_1_86.ZIP	CP Console executable and help file	Binary
MD_1_86_SRC.ZIP	CP Console Source control files	Binary

## **4.4. Database Creation**

N/A

## **4.5. Installation Scripts**

N/A

## **4.6. Cron Scripts**

N/A

## **4.7. Access Requirements and Skills Needed for the Installation**

Installation of CP Console v1.0.86.2 requires the following to install:

- Programmer access to VistA instance and ability to install KIDS build.
- Citrix Access Gateway (CAG) installs – access/ability to upload to the CAG.
- Network Share installs – access/ability to upload executable to the network share location.
- Individual work-station installs – access/ability to push executable to required work stations.

## **4.8. Installation Procedure**

### **4.8.8. MD\*1.0\*86 VistA Installation**

- a. Choose the PackMan message containing this patch and invoke the INSTALL/CHECK MESSAGE PackMan option.
- b. Select Kernel Installation & Distribution System Option: Installation
  - 1 Load a Distribution
  - 2 Verify Checksums in Transport Global
  - 3 Print Transport Global
  - 4 Compare Transport Global to Current System
  - 5 Backup a Transport Global

- 6 Install Package(s)
  - 7 Restart Install of Package(s)
  - 8 Unload a Distribution
- c. From this menu, elect to use the following options:
    - Compare Transport Global to Current System
    - Verify Checksums in Transport Global
  - d. Use the Install Package(s) options and select the package MD\*1.0\*86
  - e. When prompted 'Want KIDS to INHIBIT LOGONS during the install? NO//', respond NO.
  - f. When prompted 'Want to DISABLE Scheduled Options, Menu Options, and Protocols? NO//', respond NO.

#### **4.8.9. CP Console v1.0.86.2 GUI Installation**

The ZIP file (MD\_1\_86.ZIP) contains the CP Console GUI executable and associated files. Download the ZIP file and extract all the files.

##### **4.8.9.2. CP Console GUI Methods of Installation**

The following methods of installation of CP Console are available. Sites' choice of which method(s) to use will depend upon IT Operations and Services personnel/VISN policies, Local Area Network (LAN) performance or other local circumstances. User requirements, physical location and methods of connection to the VA network may warrant more than one of the options below to be used.

##### **Network (Shared) Installation:**

This method is typically the simplest to maintain, providing the local network infrastructure is robust enough to handle the additional traffic caused by users running the GUI executable (CPCConsole.exe) across the LAN.

The GUI executable (CPCConsole.exe) and help file (CPCConsole.chm) are copied to a network shared location. Users are provided with a desktop shortcut to run CPCConsole.exe directly from the network shared drive. The necessary command line parameters (Vista server address or name and RPC Broker Port number) are entered in the "Target" field of the shortcut properties

At the time of a CP Console version update the copy of CPCConsole.exe and the help file are replaced, on the network share, with the new version.

Any users requiring access to another site's CP Console system can be given an alternate desktop shortcut with command line parameters appropriate to the intended target Vista system.

If a user requires access to an older or newer version of CP Console (e.g. for testing purposes) a different version of CPConsole.exe can be placed in a separate network location and the user be supplied with an appropriate alternate shortcut (different Target path and different VistA server command line parameters).

### **Citrix Installation:**

The GUI executable (CPConsole.exe) and associated files are installed and ran from a remote workstation, and the user views the remote workstation's screen on their local workstation.

For the local site users, this method is on a similar level to the Network (shared) installation above. The users' workstations require only an appropriate shortcut (and the necessary Citrix Access Group (CAG) infrastructure).

For the Citrix Farm administrator, this method involves installations on the host in a similar manner to either the Gold Path or the Direct Access methods outlined below.

**Note:** For issues with CAG, please contact the local or national help desk.

### **Local Workstation Installation:**

This is the "standard" method of installation where the GUI executable (CPConsole.exe) and associated files are installed on and run from the user's local workstation. This method of installation initially requires the distribution and installation of a Microsoft Software Installation (MSI) file to each user's workstation, typically accomplished via SCCM. This is outside the scope of the Sustainment team. A National package (Clinical Procedures Console v1.0.86.2) has been prepared and made available to Regional COR Client Technologies leadership.

### **Manual Install:**

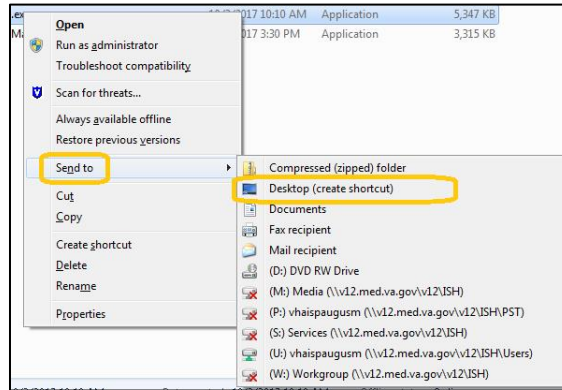
This method is used for users who wish to have a production instance and a non-production instance running on the same machine. An example would be users who are testing this software or users who need to have access to a pre-production (mirror) VistA instance.

1. Locate the MD\_1\_86.ZIP and unzip the file.
  - a. Copy the contents of the zip archive to a directory appropriate for programs. For example: C:\Program Files (x86)\Vista\CP Console. A new directory may need to be created.

**Note:** Administrator rights are required to complete these steps.
  - b. Create a Shortcut and name it "CP Console". This can be done by using Windows Explorer to navigate to the file location of CP Console.exe,

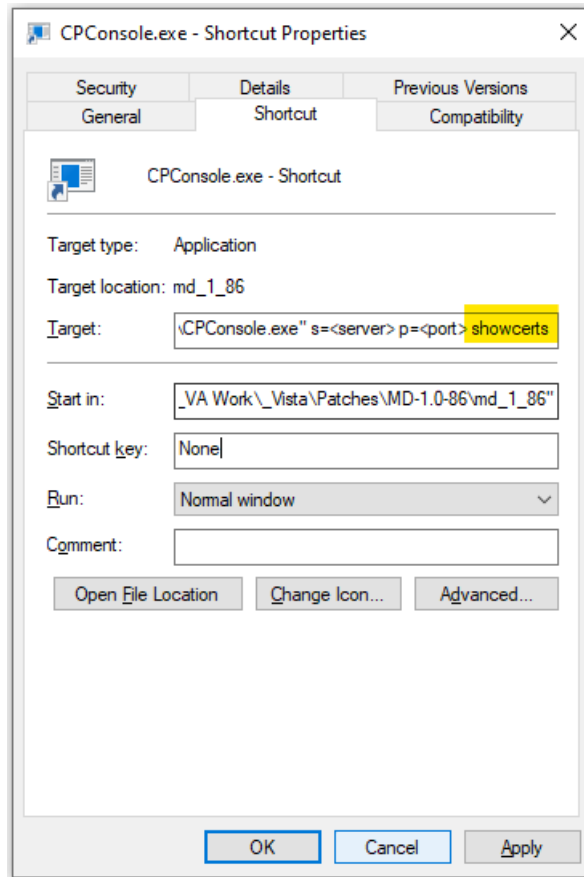
right Clicking on the file and choosing [Send to] > [Desktop (Create Shortcut)]

**Figure 1: How to Create Shortcut**



- c. Determine the DNS server name or IP address for the appropriate Vista server.
- d. Determine the Broker RPC port for the Vista account.
- e. Right click on the newly created Shortcut and select Properties. Enter "s=" IP (or DNS name) and "p=" RPC port in the Target field (or use ServerList.exe).
- f. CP Console has been updated to accept a parameter "showcerts" in the desktop shortcut for the application. When this parameter is present, the application will display a prompt allowing users to select the correct certificate and then they will be prompted for their PIV card PIN.

**Figure 2: CP Console Shortcut Properties**



**Note:** The server and port number shown above are for example only.

## 4.9. Installation Verification Procedure

[VISTA] After installing the Vista side patch, attempt the GUI verification. If the Vista side installed properly there will be no version error upon trying to open the application.

[GUI] Launch the CP Console GUI and verify the splash screen announces running version 1.0.86.2

## 4.10. System Configuration

N/A

## 4.11. Database Tuning

N/A

## **5. Back-Out Procedure**

### **5.1. Back-Out Strategy**

[VistA] This patch only has one pre-install routine which should be deleted after install. To back out the change requires manually reverting the version check parameter to the previous GUI version "1.0.64.1"

[GUI] To revert to the CP Console GUI, the 1.0.64.1 GUI would have to be redistributed

### **5.2. Back-Out Considerations**

#### **5.2.10. Load Testing**

No load testing was performed on CP Console v1.0.86.2. This was a maintenance release to update the software in Delphi 11 to remain TRM Compliant. There is no additional functionality included.

#### **5.2.11. User Acceptance Testing**

User acceptance testing was conducted by the three test sites listed in section 3.2.2.

The sites followed the provided test plan and executed the test cases according to the plan for the first build of MD\*1.0\*86. The sites either passed or failed any item based on testing. The tests were performed by users at each site who are familiar with using the application. Any issues were reported back to the development team and were re-developed and then sent back to the sites for the next build and further acceptance testing following the same process. Once in production, the same final test cases from the last build were tested in production. No subsequent builds were created as the test cases passed and sites signed off on concurrence for release of the product.

### **5.3. Back-Out Criteria**

Back-out would only be considered if there was a catastrophic failure that causes loss of function for the application and/or a significant patient safety issue.

### **5.4. Back-Out Risks**

The back-out process, would significantly impact patient care due to the interruption. Therefore, the back-out process should only be performed in an emergent situation.

### **5.5. Authority for Back-Out**

The Area Manager has the final authority to require the rollback and accept the associated risks

## 5.6. Back-Out Procedure

These steps assume that the only reason to consider a back-out for CP Console v1.0.86.2 is in the event of a catastrophic failure.

Contact the HPS Clinical Sustainment implementation team to notify them there has been a catastrophic failure with CP Console v1.0.86.2. Use the following contacts:

**Table 3: HPS CLIN Contacts**

Name	Title	Email	Telephone
REDACTED	Project Manager	REDACTED	REDACTED
REDACTED	Developer	REDACTED	REDACTED

If the decision is made to proceed with back-out and rollback, the HPS Clinical Sustainment team be available to assist sites.

1. Navigate in VistA to the XPAR EDIT PARAMETER option
  - a. At the Select PARAMETER DEFINITION NAME: prompt, enter MD PARAMETERS
  - b. At the Select Enter selection: prompt, enter SYSTEM
  - c. At the Select Parameter Name: prompt, enter VERSION\_CPCONSOLE
  - d. At the Parameter Name: prompt, hit the enter key to accept the default
  - e. At the Parameter Value: prompt, enter 1.0.64.1
  - f. [GUI] Coordinate with the appropriate IT support, local and regional, to schedule the time to push out and install the previous GUI executable.
  - g. Once CP Console v1.0.64.1 have been installed, verify operations before making available to all staff.

If those Rollback steps are too complex or time consuming, included with the Post Install Routine MDPOST86 is a ROLLBACK tag/portion that can be run from the command line to set the parameter back to "1.0.64.1". Just issue the following command:

```
VISTA>D ROLLBACK^MDPOST86
```

## 5.7. Back-out Verification Procedure

1. Ensure the 1.0.64.1 executable launches properly.

- a. Perform site-specific testing appropriate to the areas where the catastrophic failure was identified.

## **6. Rollback Procedure**

### **6.1. Rollback Considerations**

N/A

### **6.2. Rollback Criteria**

N/A

### **6.3. Rollback Risks**

N/A

### **6.4. Authority for Rollback**

The Facility CIO has the final authority to require the rollback and accept the associated risks

### **6.5. Rollback Procedure**

Back-out will automatically rollback version.

### **6.6. Rollback Verification Procedure**

N/A