



VistA Blood Establishment Computer Software (VBECS) 2.3.4 Rev B

Release Notes Version 1.0

Department of Veterans Affairs
Enterprise Project Management Office

Revision History

Date	Revision	Description	Author
11/2/23	1.0	VBECS 2.3.4 Rev B Initial version	BBM Team

Table of Contents

- REVISION HISTORY I**
- INTRODUCTION..... 1**
- CHANGED FEATURES AND FUNCTIONS..... 1**
 - UNTESTABLE SYSTEM-LEVEL MAINTENANCE CHANGES 1
 - VISTA SOFTWARE DEPENDENCIES 1
 - VBECS USER DOCUMENTS 2
- CUSTOMER SUPPORT 4**
 - REFERENCES 4
 - VBECS SHAREPOINT SITE 4
- INSTALLATION QUALIFICATION (IQ) DOCUMENTATION..... 5**
- VALIDATION PLANNING 6**
- TABLE 1: UPDATES BY OPTION..... 7**
- TABLE 2: NEW BLOOD PRODUCTS..... 9**

Introduction

VistA Blood Establishment Computer Software (VBECS) 2.3.4 Rev B Release Notes contains information for changes and corrections made to VBECS in the 2.3.4 Rev B patch.

Perform a local evaluation and risk assessment of the changes to determine the requirements for local validation of the changes, including documentation of the assessment activities. See *Validation Planning*.

Changed Features and Functions

This database-only revision letter patch release is centrally focused around providing additional blood product updates released from International Council for Commonality in Blood Banking Automation, Inc. (ICCBBA) and other database-only changes to resolve known defects and requests. Blood products contained in ICCBBA releases 7.62.0 through 7.68.1 are included.

Table 1: Updates by Option provides a complete list of included changes. For a full list of new product codes see **Table 2: New Blood Products**. For a list of cold-stored platelets that have an extended storage time refer to

Untestable System-Level Maintenance Changes

- Corrected database auditing fields for tracking of the last user to update blood unit status.
- Corrected non-ASCII apostrophe values in user role reference tables.
- Updated Special Testing Barcode Scanning table with corrected values from ICCBBA.

VistA Software Dependencies

- VBEC*2*13 information patch only.

VBECs User Documents

The following is a list of all the VBECs user documents that apply to the VBECs 2.3.4 Rev B patch release. The **Updated** column identifies the documents that have been updated with this VBECs 2.3.4 Rev B patch release.

These user documents are available from the VBECs SharePoint site at **REDACTED**.

User Document	Version	Updated
<i>VBECs 2.3.4 User Guide</i>	2.0	Yes
<i>VBECs 2.3.4 Admin User Guide</i>	2.0	Yes
<i>VBECs 2.3.4 Known Defects and Anomalies</i>	3.0	Yes
<i>VBECs 2.3.4 Technical Manual-Security Guide</i>	2.0	Yes
<i>VBECs - Echo Interface Configuration and Setup Guide</i>	6.0	No
<i>VBECs - Erytra Interface Configuration and Setup Guide</i>	3.0	No
<i>VBECs - ProVue Interface Configuration and Setup Guide</i>	6.0	No
<i>VBECs - Vision Interface Configuration and Setup Guide</i>	5.0	No
<i>VBECs Product Information</i>	10.0	Yes

The following is a list of all the VBECS FAQ documents that apply to the VBECS 2.3.4 Rev B patch release. The **Updated** column identifies the documents that have been updated with this VBECS 2.3.4 Rev B patch release.

These FAQ documents are available from the VA SharePoint site at **REDACTED**.

FAQ Document	Version	Updated
<i>FAQ ABO Subgroup Interpretations</i>	11/22/16	No
<i>FAQ Accreditation Questions Regarding Laboratory Information Systems</i>	6/9/2023	No
<i>FAQ Ancillary Vista Validation</i>	11/28/17	No
<i>FAQ Antibodies with No Antigen Negative Requirement</i>	10/15/14	No
<i>FAQ Blood Product Table Processes</i>	02/21/23	No
<i>FAQ CAP Comprehensive Transfusions Medicine Crossmatch Survey</i>	11/22/16	No
<i>FAQ CPRS VBECS Order Details</i>	04/01/09	No
<i>FAQ Database Conversion Oddballs</i>	09/15/09	No
<i>FAQ Documenting Unhandled Exceptions</i>	05/21/07	No
<i>FAQ Handling ABO Incompatible Transfusion Situations</i>	09/23/14	No
<i>FAQ How to File a New Service Request for Changes to VBECS</i>	12/08/16	No
<i>FAQ How to take faster screen shots from Remote Desktop Session</i>	12/17/14	No
<i>FAQ Identifying a Comparable Blood Product Code</i>	09/03/21	No
<i>FAQ Local Facilities</i>	06/12/20	No
<i>FAQ Modification Target Not Available</i>	11/28/17	No
<i>FAQ Multidivisional QC Rack Workaround</i>	11/28/17	No
<i>FAQ Order Status Clarification</i>	11/15/17	No
<i>FAQ Polyspecific AHG Not Used for Testing</i>	01/29/10	No
<i>FAQ Proper Use of PIV Card with VBECS</i>	09/14/21	No
<i>FAQ QC Setup</i>	01/29/10	No
<i>FAQ Retesting QC</i>	11/01/11	No
<i>FAQ Retrieving an Expired Order</i>	12/07/17	No
<i>FAQ The Difference Between Transfusion Only and Full Service Facility Types</i>	02/08/10	No
<i>FAQ VBECS Blood Product Hierarchy</i>	03/28/19	No
<i>FAQ VBECS Computer Crossmatch Decision Tree</i>	02/08/12	No
<i>FAQ Weak D Policy</i>	01/11/10	No
<i>FAQ Workload Assignments Single vs Batch Processing</i>	07/01/20	No

Customer Support

Contact your **Local/Regional** Office of Information Technology (OIT) or Laboratory Information Manager (LIM) if you encounter VistA or CPRS connection problems and for training support **before** contacting the Service Desk (SD).



Please ensure local/regional VistA Support contact information is available at all times.

If you experience an FDA reportable adverse event (patient death or serious injury) that VBECS may have caused or contributed to, contact the Service Desk directly to enter a ticket for Blood Bank software support.

If the problem remains unresolved after local VistA triage, call the Service Desk (below) and specify the Enterprise Application be set as VBECS (VistA Blood Establishment Computer Software)

Service Desk Contact

Call the Service Desk **REDACTED**.

Refer to the VBECS Getting Help page on the VBECS SharePoint site for up-to-date information about contacting the Service Desk.

For troubleshooting error messages in VBECS similar to Contact Your System Administrator, contact the Service Desk.

References

- *ISBT 128 Standard Technical Specification v 6.2.2*
- *ISBT 128 Standard Terminology for Medical Products of Human Origin, v 7.68*
- *United States Consensus Standard for the Uniform Labeling of Blood and Blood Components Using ISBT 128, v3.0.0*
- *Standards for Blood Banks and Transfusion Services, 33rd Edition*

VBECS SharePoint Site

The VBECS SharePoint site provides a location for additional information related to the VBECS application such as FAQs, installation status, remote desktop and report share shortcuts, and release history.

REDACTED

Installation Qualification (IQ) Documentation

Test Account Upgrade to VBECS 2.3.4 Revision B	
Required Patch Installation	VistA Patch: None Server Patch: VBECS 2.3.4 Revision B
Installation Process for VBECS 2.3.4 Rev B	Installed by the BBM team, all sites will be installed in one day. The date of installation will be communicated through a ListServ announcement.
Expected Downtime	None
Installation Communication for VBECS 2.3.4 Rev B	The planned completion time for all test installs will be provided on the VBECS SharePoint site.
Site Responsibility	<ul style="list-style-type: none"> • Join VBECS-L message board on ListServ, if needed. • Communicate any changes to your site supervisor and Point of Contact (POC) since the last patch install to the BBM team to the email group “VA OIT BBM Team”.
Site Record of Patch Installation	Sites should take and save a screenshot of the VBECS Help, About window after the Test installation is performed. This displays the VBECS updated version information.

Production Account Upgrade to VBECS 2.3.4 Revision B	
Required Patch Installation	VistA Patch: None Server Patch: VBECS 2.3.4 Revision B
Installation Process for VBECS 2.3.4 Rev B	Installed by the BBM team, all sites will be installed in one day. The date of installation will be communicated through a ListServ announcement.
Expected Downtime	You will be able to use VBECS during the patch installation. VBECS installation on your production account only lasts a few minutes and is invisible to users. If you encounter any disruption or errors while viewing or printing reports during the installation, try again after a few minutes.
Installation Communication for VBECS 2.3.4 Rev B	The status of production installs will be provided on the VBECS SharePoint site.
Site Responsibility	<ul style="list-style-type: none"> • Perform local validation, training, and set-up requirements prior to Production installation. • Join VBECS-L message board on ListServ, if needed. • Communicate any changes to your site supervisor and Point of Contact (POC) since the last patch install to the BBM team to the email group “VA OIT BBM Team”.
Site Record of Patch Installation	Sites should take and save a screenshot of the VBECS Help, About window after Production installation is performed. This displays the VBECS updated version information.

Validation Planning

The following is a flowchart to help assess changes for validation planning.

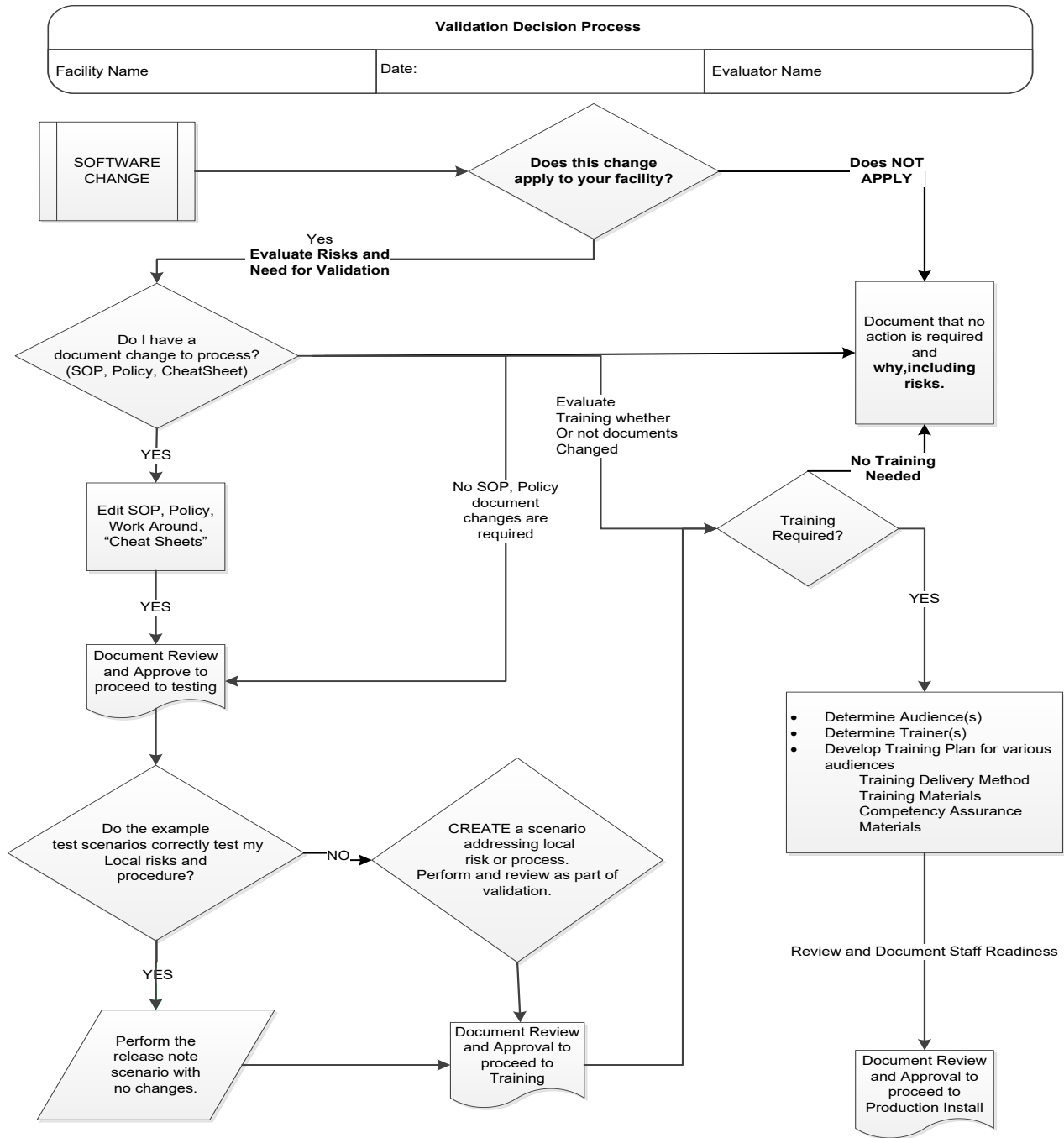


Table 1: Updates by Option

ID	Option	Problem Summary	Change Summary	Validation Scenario	Change applies to my facility. (Y/N)	Local risk Assessment (Low, Med, High)	SOP revision required. If yes, identify it.	Staff training needed. (Y/N)	Scenarios or validation must be performed. (Y/N)
1	Automated Testing	Sending test results for a reused specimen UID not accepted in VBECS can cause the test result to link to the older/expired specimen.	VBECS can no longer accept automated test results for a specimen that has been expired for more than 5 years.	No validation is required.					
2	CPRS Blood Bank Report	Unicode characters are displayed as question marks in CPRS.	Unicode characters for hyphens, single quotes, double quotes and ellipses are now translated to ASCII characters, transferred and displayed correctly in CPRS.	No validation is required.					
3	Confirm ABO-Rh	Entering a rack selection Date Tested greater than 68 years old causes a crash.	The rack selection entry screen no longer crashes when dates are manually entered in the Date Tested field.	No validation is required.					
4	ICCBBA Blood Products	Update blood product table with new ICCBBA blood product codes from 7.62.0 through 7.68.1.	New blood products were added to VBECS. For a full list of new product codes see Table 2. The list of all possible non-pooled modifications for new blood products can be found on the VBECS SharePoint Site.	Validate only blood products that you may receive from your supplier. Use Tools, Blood Products to associate the blood products with an active facility.					
5	Patient Updates	Patient updates can be displayed in the incorrect date order.	Date Updated displays correctly when patient demographics are updated in VistA more than once before viewing the updates in VBECS.	No validation is required.					

ID	Option	Problem Summary	Change Summary	Validation Scenario	Change applies to my facility. (Y/N)	Local risk Assessment (Low, Med, High)	SOP revision required. If yes, identify it.	Staff training needed. (Y/N)	Scenarios or validation must be performed. (Y/N)
6	Throughout VBECS	Performance can be improved for patient search.	Performance improvements to patient search with patients having extensive ABO testing history.	<ol style="list-style-type: none"> 1. Open Orders, Order Reflex Tests. 2. Check the box for Show Unacceptable and Expired Specimens. 3. Enter the last 4 SSN digits for the test patient. 4. Click Search. 5. Note the time elapsed for the results to display. 6. Open Patients, Invalidate Test Results. 7. Check the box for Include Unacceptable Specimens. 8. Enter the last 4 SSN digits for the test patient. 9. Set the Expires After to 2013. 10. Click Search. 11. Note the time elapsed for the results to display. 12. Open Orders, Order History Report. 13. Set the Date Ordered to 2013. 14. Enter the last 4 SSN digits for the test patient. 15. Click Search. 16. Note the time elapsed for the results to display. 					
8	Local Facilities	Tulsa Multidivisional Site not included on National Facility Table.	Tulsa Division added to the National Facility Table in the Local Facilities option..	No validation is required					

Table 2: New Blood Products

Component	Product Code	Modifiable	Product Type	Long Name	Short Name	Maximum Storage Hours
PLATELETS	EA823	No	Apheresis PLATELETS	Apheresis PLATELETS ACD-A>PAS-C/XX/20-24C For mnf:injectable ResLeu:<5E6 <3E11 plts	PLT AFR ACD-A>PAS-C MNFI LUKOPR	120
PLATELETS	EA824	No	Apheresis PLATELETS	Apheresis PLATELETS ACD-A>PAS-C/XX/20-24C For mnf:injectable ResLeu:<5E6 1st container <3E11 plts	PLT AFR ACD-A>PAS-C MNFI LUKOPR 1C	120
PLATELETS	EA825	No	Apheresis PLATELETS	Apheresis PLATELETS ACD-A>PAS-C/XX/20-24C For mnf:injectable ResLeu:<5E6 2nd container <3E11 plts	PLT AFR ACD-A>PAS-C MNFI LUKOPR 2C	120
PLATELETS	EA826	No	Apheresis PLATELETS	Apheresis PLATELETS ACD-A>PAS-C/XX/20-24C For mnf:injectable ResLeu:<5E6 3rd container <3E11 plts	PLT AFR ACD-A>PAS-C MNFI LUKOPR 3C	120
PLATELETS	EA827	No	Apheresis PLATELETS	Apheresis PLATELETS ACD-A>PAS-C/XX/20-24C For mnf:injectable Irradiated ResLeu:<5E6	PLT AFR ACD-A>PAS-C MNFI IRD LUKOPR	120
PLATELETS	EA828	No	Apheresis PLATELETS	Apheresis PLATELETS ACD-A>PAS-C/XX/20-24C For mnf:injectable Irradiated ResLeu:<5E6 1st container	PLT AFR ACD-A>PAS-C MNFI IRD LUKOPR 1C	120
PLATELETS	EA829	No	Apheresis PLATELETS	Apheresis PLATELETS ACD-A>PAS-C/XX/20-24C For mnf:injectable Irradiated ResLeu:<5E6 2nd container	PLT AFR ACD-A>PAS-C MNFI IRD LUKOPR 2C	120
PLATELETS	EA830	No	Apheresis PLATELETS	Apheresis PLATELETS ACD-A>PAS-C/XX/20-24C For mnf:injectable Irradiated ResLeu:<5E6 3rd container	PLT AFR ACD-A>PAS-C MNFI IRD LUKOPR 3C	120
PLATELETS	EA831	No	Apheresis PLATELETS	Apheresis PLATELETS ACD-A>PAS-C/XX/20-24C For mnf:injectable Irradiated ResLeu:<5E6 <3E11 plts	PLT AFR ACD-A>PAS-C MNFI IRD LUKOPR	120
PLATELETS	EA832	No	Apheresis PLATELETS	Apheresis PLATELETS ACD-A>PAS-C/XX/20-24C For mnf:injectable Irradiated ResLeu:<5E6 1st container <3E11 plts	PLT AFR ACD-A>PAS-C MNFI IRD LUKOPR 1C	120
PLATELETS	EA833	No	Apheresis PLATELETS	Apheresis PLATELETS ACD-A>PAS-C/XX/20-24C For mnf:injectable Irradiated ResLeu:<5E6 2nd container <3E11 plts	PLT AFR ACD-A>PAS-C MNFI IRD LUKOPR 2C	120
PLATELETS	EA834	No	Apheresis PLATELETS	Apheresis PLATELETS ACD-A>PAS-C/XX/20-24C For mnf:injectable Irradiated ResLeu:<5E6 3rd container <3E11 plts	PLT AFR ACD-A>PAS-C MNFI IRD LUKOPR 3C	120
PLATELETS	EA835	No	Apheresis PLATELETS	Apheresis PLATELETS ACD-A>PAS-C/XX/20-24C For mnf:injectable ResLeu:<5E6 Psoralen-treated	PLT AFR ACD-A>PAS-C MNFI LUKOPR Psoraln	120
PLATELETS	EA836	No	Apheresis PLATELETS	Apheresis PLATELETS ACD-A>PAS-C/XX/20-24C For mnf:injectable ResLeu:<5E6 1st container Psoralen-treated	PLT AFR ACD-A>PAS-C MNFI LUKOPR 1C Psoraln	120
PLATELETS	EA837	No	Apheresis PLATELETS	Apheresis PLATELETS ACD-A>PAS-C/XX/20-24C For mnf:injectable ResLeu:<5E6 2nd container Psoralen-treated	PLT AFR ACD-A>PAS-C MNFI LUKOPR 2C Psoraln	120
PLATELETS	EA838	No	Apheresis PLATELETS	Apheresis PLATELETS ACD-A>PAS-C/XX/20-24C For mnf:injectable ResLeu:<5E6 3rd container Psoralen-treated	PLT AFR ACD-A>PAS-C MNFI LUKOPR 3C Psoraln	120
PLATELETS	EA839	No	Apheresis PLATELETS	Apheresis PLATELETS ACD-A>PAS-C/XX/20-24C For mnf:injectable ResLeu:<5E6 <3E11 plts Psoralen-treated	PLT AFR ACD-A>PAS-C MNFI LUKOPR Psoraln	120
PLATELETS	EA840	No	Apheresis PLATELETS	Apheresis PLATELETS ACD-A>PAS-C/XX/20-24C For mnf:injectable ResLeu:<5E6 1st container <3E11 plts Psoralen-treated	PLT AFR ACD-A>PAS-C MNFI LUKOPR 1C Psoraln	120

Component	Product Code	Modifiable	Product Type	Long Name	Short Name	Maximum Storage Hours
PLATELETS	EA841	No	Apheresis PLATELETS	Apheresis PLATELETS ACD-A>PAS-C/XX/20-24C For mnf:injectable ResLeu:<5E6 2nd container <3E11 plts Psoralen-treated	PLT AFR ACD-A>PAS-C MNFI LUKOPR 2C Psoraln	120
PLATELETS	EA842	No	Apheresis PLATELETS	Apheresis PLATELETS ACD-A>PAS-C/XX/20-24C For mnf:injectable ResLeu:<5E6 3rd container <3E11 plts Psoralen-treated	PLT AFR ACD-A>PAS-C MNFI LUKOPR 3C Psoraln	120
PLATELETS	EA843	No	Apheresis PLATELETS	Apheresis PLATELETS ACD-A>PAS-C/XX/20-24C For mnf:noninjectable ResLeu:<5E6 1st container <3E11 plts	PLT AFR ACD-A>PAS-C MNFNI LUKOPR 1C	120
PLATELETS	EA844	No	Apheresis PLATELETS	Apheresis PLATELETS ACD-A>PAS-C/XX/20-24C For mnf:noninjectable ResLeu:<5E6 2nd container <3E11 plts	PLT AFR ACD-A>PAS-C MNFNI LUKOPR 2C	120
PLATELETS	EA845	No	Apheresis PLATELETS	Apheresis PLATELETS ACD-A>PAS-C/XX/20-24C For mnf:noninjectable ResLeu:<5E6 3rd container <3E11 plts	PLT AFR ACD-A>PAS-C MNFNI LUKOPR 3C	120
PLATELETS	EA846	No	Apheresis PLATELETS	Apheresis PLATELETS ACD-A>PAS-C/XX/20-24C For mnf:noninjectable Irradiated ResLeu:<5E6 1st container <3E11 plts	PLT AFR ACD-A>PAS-C MNFNI IRD LUKOPR 1C	120
PLATELETS	EA847	No	Apheresis PLATELETS	Apheresis PLATELETS ACD-A>PAS-C/XX/20-24C For mnf:noninjectable Irradiated ResLeu:<5E6 2nd container <3E11 plts	PLT AFR ACD-A>PAS-C MNFNI IRD LUKOPR 2C	120
PLATELETS	EA848	No	Apheresis PLATELETS	Apheresis PLATELETS ACD-A>PAS-C/XX/20-24C For mnf:noninjectable Irradiated ResLeu:<5E6 3rd container <3E11 plts	PLT AFR ACD-A>PAS-C MNFNI IRD LUKOPR 3C	120
PLATELETS	EA849	No	Apheresis PLATELETS	Apheresis PLATELETS ACD-A>PAS-C/XX/20-24C For mnf:noninjectable ResLeu:<5E6 Psoralen-treated	PLT AFR ACD-A>PAS-C MNFNI LUKOPR Psoraln	120
PLATELETS	EA850	No	Apheresis PLATELETS	Apheresis PLATELETS ACD-A>PAS-C/XX/20-24C For mnf:noninjectable ResLeu:<5E6 1st container Psoralen-treated	PLT AFR ACD-A>PAS-C MNFNI LUKOPR 1C Psoraln	120
PLATELETS	EA851	No	Apheresis PLATELETS	Apheresis PLATELETS ACD-A>PAS-C/XX/20-24C For mnf:noninjectable ResLeu:<5E6 2nd container Psoralen-treated	PLT AFR ACD-A>PAS-C MNFNI LUKOPR 2C Psoraln	120
PLATELETS	EA852	No	Apheresis PLATELETS	Apheresis PLATELETS ACD-A>PAS-C/XX/20-24C For mnf:noninjectable ResLeu:<5E6 3rd container Psoralen-treated	PLT AFR ACD-A>PAS-C MNFNI LUKOPR 3C Psoraln	120
PLATELETS	EA853	No	Apheresis PLATELETS	Apheresis PLATELETS ACD-A>PAS-C/XX/20-24C For mnf:noninjectable ResLeu:<5E6 <3E11 plts Psoralen-treated	PLT AFR ACD-A>PAS-C MNFNI LUKOPR Psoraln	120
PLATELETS	EA854	No	Apheresis PLATELETS	Apheresis PLATELETS ACD-A>PAS-C/XX/20-24C For mnf:noninjectable ResLeu:<5E6 1st container <3E11 plts Psoralen-treated	PLT AFR ACD-A>PAS-C MNFNI LUKOPR 1C Psoraln	120
PLATELETS	EA855	No	Apheresis PLATELETS	Apheresis PLATELETS ACD-A>PAS-C/XX/20-24C For mnf:noninjectable ResLeu:<5E6 2nd container <3E11 plts Psoralen-treated	PLT AFR ACD-A>PAS-C MNFNI LUKOPR 2C Psoraln	120
PLATELETS	EA856	No	Apheresis PLATELETS	Apheresis PLATELETS ACD-A>PAS-C/XX/20-24C For mnf:noninjectable ResLeu:<5E6 3rd container <3E11 plts Psoralen-treated	PLT AFR ACD-A>PAS-C MNFNI LUKOPR 3C Psoraln	120
PLATELETS	EA857	Yes	Apheresis PLATELETS	Apheresis PLATELETS ACD-A/XX/20-24C ResLeu:<5E6 Plasma reduced/Plasma added Psoralen-treated	PLT AFR ACD-A LUKOPR PLS Red/PA Psoraln	120
PLATELETS	EA858	Yes	Apheresis PLATELETS	Apheresis PLATELETS ACD-A/XX/20-24C ResLeu:<5E6 Plasma reduced/Plasma added 1st container Psoralen-treated	PLT AFR ACD-A LUKOPR PLS Red/PA 1C Psoraln	120

Component	Product Code	Modifiable	Product Type	Long Name	Short Name	Maximum Storage Hours
PLATELETS	EA859	Yes	Apheresis PLATELETS	Apheresis PLATELETS ACD-A/XX/20-24C ResLeu:<5E6 Plasma reduced/Plasma added 2nd container Psoralen-treated	PLT AFR ACD-A LUKOPR PLS Red/PA 2C Psoraln	120
PLATELETS	EA860	Yes	Apheresis PLATELETS	Apheresis PLATELETS ACD-A/XX/20-24C ResLeu:<5E6 Plasma reduced/Plasma added 3rd container Psoralen-treated	PLT AFR ACD-A LUKOPR PLS Red/PA 3C Psoraln	120
PLATELETS	EA861	Yes	Apheresis PLATELETS	Apheresis PLATELETS ACD-A/XX/20-24C ResLeu:<5E6 Plasma reduced/Plasma added <3E11 plts Psoralen-treated	PLT AFR ACD-A LUKOPR PLS Red/PA Psoraln	120
PLATELETS	EA862	Yes	Apheresis PLATELETS	Apheresis PLATELETS ACD-A/XX/20-24C ResLeu:<5E6 Plasma reduced/Plasma added 1st container <3E11 plts Psoralen-treated	PLT AFR ACD-A LUKOPR PLS Red/PA 1C Psoraln	120
PLATELETS	EA863	Yes	Apheresis PLATELETS	Apheresis PLATELETS ACD-A/XX/20-24C ResLeu:<5E6 Plasma reduced/Plasma added 2nd container <3E11 plts Psoralen-treated	PLT AFR ACD-A LUKOPR PLS Red/PA 2C Psoraln	120
PLATELETS	EA864	Yes	Apheresis PLATELETS	Apheresis PLATELETS ACD-A/XX/20-24C ResLeu:<5E6 Plasma reduced/Plasma added 3rd container <3E11 plts Psoralen-treated	PLT AFR ACD-A LUKOPR PLS Red/PA 3C Psoraln	120
PLATELETS	EA865	Yes	Apheresis PLATELETS	Apheresis PLATELETS ACD-A>PAS-C/XX/20-24C ResLeu:<5E6 Plasma reduced/Plasma added Psoralen-treated	PLT AFR ACD-A>PAS-C LUKOPR PLS Red/PA Psoraln	120
PLATELETS	EA866	Yes	Apheresis PLATELETS	Apheresis PLATELETS ACD-A>PAS-C/XX/20-24C ResLeu:<5E6 Plasma reduced/Plasma added 1st container Psoralen-treated	PLT AFR ACD-A>PAS-C LUKOPR PLS Red/PA 1C Psoraln	120
PLATELETS	EA867	Yes	Apheresis PLATELETS	Apheresis PLATELETS ACD-A>PAS-C/XX/20-24C ResLeu:<5E6 Plasma reduced/Plasma added 2nd container Psoralen-treated	PLT AFR ACD-A>PAS-C LUKOPR PLS Red/PA 2C Psoraln	120
PLATELETS	EA868	Yes	Apheresis PLATELETS	Apheresis PLATELETS ACD-A>PAS-C/XX/20-24C ResLeu:<5E6 Plasma reduced/Plasma added 3rd container Psoralen-treated	PLT AFR ACD-A>PAS-C LUKOPR PLS Red/PA 3C Psoraln	120
PLATELETS	EA869	Yes	Apheresis PLATELETS	Apheresis PLATELETS ACD-A>PAS-C/XX/20-24C ResLeu:<5E6 Plasma reduced/Plasma added <3E11 plts Psoralen-treated	PLT AFR ACD-A>PAS-C LUKOPR PLS Red/PA Psoraln	120
PLATELETS	EA870	Yes	Frozen POOLED PLATELETS	Frozen POOLED PLATELETS DMSO/XX/<=80C Irradiated ResLeu:<1E6 Buffy coat plts prep 6 units	PLT Pool Froz DMSO IRD LUKOPR BUFCT 6U	8760
FRESH FROZEN PLASMA	EA871	Yes	Thawed Apheresis FRESH FROZEN PLASMA	Thawed Apheresis FRESH FROZEN PLASMA ACD-A/XX/refg Frozen <=15h Methylene blue-treated	FFP AFR Thaw ACD-A Methyl Blue	24
FRESH FROZEN PLASMA	EA872	Yes	Thawed Apheresis FRESH FROZEN PLASMA	Thawed Apheresis FRESH FROZEN PLASMA NaCitrate/XX/refg Frozen <=15h Methylene blue-treated	FFP AFR Thaw NaCit Methyl Blue	24
PLATELETS	EA873	No	Apheresis PLATELETS	Apheresis PLATELETS PAS-E/XX/refg ResLeu:<1E6 1st container	PLT AFR PAS-E LUKOPR 1C	336
PLATELETS	EA874	No	Apheresis PLATELETS	Apheresis PLATELETS PAS-E/XX/refg ResLeu:<1E6 2nd container	PLT AFR PAS-E LUKOPR 2C	336
PLATELETS	EA875	No	Apheresis PLATELETS	Apheresis PLATELETS PAS-E/XX/refg ResLeu:<1E6 3rd container	PLT AFR PAS-E LUKOPR 3C	336
PLATELETS	EA876	No	Apheresis PLATELETS	Apheresis PLATELETS PAS-E/XX/refg ResLeu:<1E6 4th container	PLT AFR PAS-E LUKOPR 4C	336
PLATELETS	EA877	No	Apheresis PLATELETS	Apheresis PLATELETS PAS-E/XX/refg Irradiated ResLeu:<1E6 1st container	PLT AFR PAS-E IRD LUKOPR 1C	336
PLATELETS	EA878	No	Apheresis PLATELETS	Apheresis PLATELETS PAS-E/XX/refg Irradiated ResLeu:<1E6 2nd container	PLT AFR PAS-E IRD LUKOPR 2C	336

Component	Product Code	Modifiable	Product Type	Long Name	Short Name	Maximum Storage Hours
PLATELETS	EA879	No	Apheresis PLATELETS	Apheresis PLATELETS PAS-E/XX/refg Irradiated ResLeu:<1E6 3rd container	PLT AFR PAS-E IRD LUKOPR 3C	336
PLATELETS	EA880	No	Apheresis PLATELETS	Apheresis PLATELETS PAS-E/XX/refg Irradiated ResLeu:<1E6 4th container	PLT AFR PAS-E IRD LUKOPR 4C	336
PLATELETS	EA881	No	POOLED PLATELETS	POOLED PLATELETS PAS-E/XX/refg ResLeu:<1E6 Approx 240 E9 plts	PLT Pool PAS-E LUKOPR	120
PLATELETS	EA882	No	POOLED PLATELETS	POOLED PLATELETS PAS-E/XX/refg Irradiated ResLeu:<1E6 Approx 240 E9 plts	PLT Pool PAS-E IRD LUKOPR	120
PLATELETS	EA883	Yes	Apheresis PLATELETS	Apheresis PLATELETS ACD-A>PAS-C/XX/20-24C Open ResLeu:<5E6 Plasma reduced/Saline added 1st container <3E11 plts Psoralen-treated	PLT AFR ACD-A>PAS-C OPN LUKOPR PLS Red/SAL Add 1C Psoraln	4
PLATELETS	EA884	Yes	Apheresis PLATELETS	Apheresis PLATELETS ACD-A>PAS-C/XX/20-24C Open ResLeu:<5E6 Plasma reduced/Saline added 2nd container <3E11 plts Psoralen-treated	PLT AFR ACD-A>PAS-C OPN LUKOPR PLS Red/SAL Add 2C Psoraln	4
PLATELETS	EA885	Yes	Apheresis PLATELETS	Apheresis PLATELETS ACD-A>PAS-C/XX/20-24C Open ResLeu:<5E6 Plasma reduced/Saline added 3rd container <3E11 plts Psoralen-treated	PLT AFR ACD-A>PAS-C OPN LUKOPR PLS Red/SAL Add 3C Psoraln	4
PLATELETS	EA886	Yes	Apheresis PLATELETS	Apheresis PLATELETS ACD-A>PAS-C/XX/20-24C ResLeu:<5E6 Plasma reduced/Plasma added 1st container <3E11 plts Psoralen-treated	PLT AFR ACD-A>PAS-C LUKOPR PLS Red/PA 1C Psoraln	120
PLATELETS	EA887	Yes	Apheresis PLATELETS	Apheresis PLATELETS ACD-A>PAS-C/XX/20-24C ResLeu:<5E6 Plasma reduced/Plasma added 2nd container <3E11 plts Psoralen-treated	PLT AFR ACD-A>PAS-C LUKOPR PLS Red/PA 2C Psoraln	120
PLATELETS	EA888	Yes	Apheresis PLATELETS	Apheresis PLATELETS ACD-A>PAS-C/XX/20-24C ResLeu:<5E6 Plasma reduced/Plasma added 3rd container <3E11 plts Psoralen-treated	PLT AFR ACD-A>PAS-C LUKOPR PLS Red/PA 3C Psoraln	120
PLATELETS	EA889	No	Apheresis PLATELETS	Apheresis PLATELETS ACD-A/XX/20-24C For mnf:noninjectable <3E11 plts	PLT AFR ACD-A MNFNI	120
PLATELETS	EA890	No	Apheresis PLATELETS	Apheresis PLATELETS ACD-A/XX/20-24C For mnf:noninjectable 1st container <3E11 plts	PLT AFR ACD-A MNFNI 1C	120
PLATELETS	EA891	No	Apheresis PLATELETS	Apheresis PLATELETS ACD-A/XX/20-24C For mnf:noninjectable 2nd container <3E11 plts	PLT AFR ACD-A MNFNI 2C	120
PLATELETS	EA892	No	Apheresis PLATELETS	Apheresis PLATELETS ACD-A/XX/20-24C For mnf:noninjectable 3rd container <3E11 plts	PLT AFR ACD-A MNFNI 3C	120
PLATELETS	EA893	No	Apheresis PLATELETS	Apheresis PLATELETS ACD-A/XX/20-24C For mnf:noninjectable Irradiated	PLT AFR ACD-A MNFNI IRD	120
PLATELETS	EA894	No	Apheresis PLATELETS	Apheresis PLATELETS ACD-A/XX/20-24C For mnf:noninjectable Irradiated 1st container	PLT AFR ACD-A MNFNI IRD 1C	120
PLATELETS	EA895	No	Apheresis PLATELETS	Apheresis PLATELETS ACD-A/XX/20-24C For mnf:noninjectable Irradiated 2nd container	PLT AFR ACD-A MNFNI IRD 2C	120
PLATELETS	EA896	No	Apheresis PLATELETS	Apheresis PLATELETS ACD-A/XX/20-24C For mnf:noninjectable Irradiated 3rd container	PLT AFR ACD-A MNFNI IRD 3C	120
PLATELETS	EA897	No	Apheresis PLATELETS	Apheresis PLATELETS ACD-A/XX/20-24C For mnf:noninjectable Irradiated <3E11 plts	PLT AFR ACD-A MNFNI IRD	120

Component	Product Code	Modifiable	Product Type	Long Name	Short Name	Maximum Storage Hours
PLATELETS	EA898	No	Apheresis PLATELETS	Apheresis PLATELETS ACD-A/XX/20-24C For mnf:noninjectable Irradiated 1st container <3E11 plts	PLT AFR ACD-A MNFNI IRD 1C	120
PLATELETS	EA899	No	Apheresis PLATELETS	Apheresis PLATELETS ACD-A/XX/20-24C For mnf:noninjectable Irradiated 2nd container <3E11 plts	PLT AFR ACD-A MNFNI IRD 2C	120
PLATELETS	EA900	No	Apheresis PLATELETS	Apheresis PLATELETS ACD-A/XX/20-24C For mnf:noninjectable Irradiated 3rd container <3E11 plts	PLT AFR ACD-A MNFNI IRD 3C	120
FRESH FROZEN PLASMA	EA901	Yes	Thawed Apheresis PLASMA	Thawed Apheresis PLASMA ACD-A/XX/refg Open Frozen <=24h 1st container	PLASMA AFR Thaw ACD-A OPN 1C	24
FRESH FROZEN PLASMA	EA902	Yes	Thawed Apheresis PLASMA	Thawed Apheresis PLASMA ACD-A/XX/refg Open Frozen <=24h 2nd container	PLASMA AFR Thaw ACD-A OPN 2C	24
FRESH FROZEN PLASMA	EA903	Yes	Thawed Apheresis PLASMA	Thawed Apheresis PLASMA ACD-A/XX/refg Open Frozen <=24h 3rd container	PLASMA AFR Thaw ACD-A OPN 3C	24
FRESH FROZEN PLASMA	EA904	Yes	Thawed Apheresis PLASMA	Thawed Apheresis PLASMA ACD-A/XX/refg Open Frozen <=24h 4th container	PLASMA AFR Thaw ACD-A OPN 4C	24
FRESH FROZEN PLASMA	EA905	Yes	Thawed Apheresis PLASMA	Thawed Apheresis PLASMA ACD-A/XX/refg Open Irradiated Frozen <=24h 1st container	PLASMA AFR Thaw ACD-A OPN IRD 1C	24
FRESH FROZEN PLASMA	EA906	Yes	Thawed Apheresis PLASMA	Thawed Apheresis PLASMA ACD-A/XX/refg Open Irradiated Frozen <=24h 2nd container	PLASMA AFR Thaw ACD-A OPN IRD 2C	24
FRESH FROZEN PLASMA	EA907	Yes	Thawed Apheresis PLASMA	Thawed Apheresis PLASMA ACD-A/XX/refg Open Irradiated Frozen <=24h 3rd container	PLASMA AFR Thaw ACD-A OPN IRD 3C	24
FRESH FROZEN PLASMA	EA908	Yes	Thawed Apheresis PLASMA	Thawed Apheresis PLASMA ACD-A/XX/refg Open Irradiated Frozen <=24h 4th container	PLASMA AFR Thaw ACD-A OPN IRD 4C	24
PLATELETS	EA909	Yes	Washed Apheresis PLATELETS	Washed Apheresis PLATELETS None/XX/20-24C Open Irradiated ResLeu:<5E6 1st container <3E11 plts Psoralen-treated	PLT AFR Wash None OPN IRD LUKOPR 1C Psoraln	4
PLATELETS	EA910	Yes	Washed Apheresis PLATELETS	Washed Apheresis PLATELETS None/XX/20-24C Open Irradiated ResLeu:<5E6 2nd container <3E11 plts Psoralen-treated	PLT AFR Wash None OPN IRD LUKOPR 2C Psoraln	4
PLATELETS	EA911	Yes	Washed Apheresis PLATELETS	Washed Apheresis PLATELETS None/XX/20-24C Open Irradiated ResLeu:<5E6 3rd container <3E11 plts Psoralen-treated	PLT AFR Wash None OPN IRD LUKOPR 3C Psoraln	4
RED BLOOD CELLS	EA912	Yes	RED BLOOD CELLS	RED BLOOD CELLS CPD>AS1/XX/refg ResLeu:<5E6 Supernat reduced LowVol:anticoag not adj	RBC CPD>AS1 LUKOPR SUPRed LowVol	1008
RED BLOOD CELLS	EA913	Yes	RED BLOOD CELLS	RED BLOOD CELLS CPD>AS1/XX/refg Irradiated ResLeu:<5E6 Supernat reduced LowVol:anticoag not adj	RBC CPD>AS1 IRD LUKOPR SUPRed LowVol	672

Component	Product Code	Modifiable	Product Type	Long Name	Short Name	Maximum Storage Hours
RED BLOOD CELLS	EA914	No	RED BLOOD CELLS	RED BLOOD CELLS CPD/XX/refg For mnf:noninjectable ResLeu:<1E6	RBC CPD MNFNI LUKOPR	504
FRESH FROZEN PLASMA	EA915	Yes	Liquid PLASMA	Liquid PLASMA CPD/450mL/<37C	PLASMA Liq CPD	624
FRESH FROZEN PLASMA	EA916	No	Liquid PLASMA	Liquid PLASMA CPD/450mL/<37C For mnf:injectable	PLASMA Liq CPD MNFI	624
FRESH FROZEN PLASMA	EA917	No	Liquid PLASMA	Liquid PLASMA CPD/450mL/<37C For mnf:noninjectable	PLASMA Liq CPD MNFNI	624
FRESH FROZEN PLASMA	EA918	Yes	Liquid PLASMA	Liquid PLASMA CPD/450mL/<37C Methylene blue-treated	PLASMA Liq CPD Methyl Blue	624
FRESH FROZEN PLASMA	EA919	Yes	Liquid PLASMA	Liquid PLASMA CPD/450mL/<37C Riboflavin-treated	PLASMA Liq CPD Ribo	624
FRESH FROZEN PLASMA	EA920	No	Liquid Apheresis PLASMA	Liquid Apheresis PLASMA ACD-A/XX/<37C For mnf:noninjectable Open	PLASMA AFR Liq ACD-A MNFNI OPN	24
FRESH FROZEN PLASMA	EA921	Yes	Liquid Apheresis PLASMA	Liquid Apheresis PLASMA ACD-A/XX/<37C Methylene blue-treated	PLASMA AFR Liq ACD-A Methyl Blue	120
FRESH FROZEN PLASMA	EA922	Yes	Liquid Apheresis PLASMA	Liquid Apheresis PLASMA ACD-A/XX/<37C Riboflavin-treated	PLASMA AFR Liq ACD-A Ribo	120
PLATELETS	EA923	No	Washed Apheresis PLATELETS	Washed Apheresis PLATELETS PAS-E/XX/20-24C Open ResLeu:<1E6	PLT AFR Wash PAS-E OPN LUKOPR	4
PLATELETS	EA924	No	Washed Apheresis PLATELETS	Washed Apheresis PLATELETS PAS-E/XX/20-24C Open Irradiated ResLeu:<1E6	PLT AFR Wash PAS-E OPN IRD LUKOPR	4
CRYOPRECIPITATE	EA925	Yes	Thawed CRYOPRECIPITATE	Thawed CRYOPRECIPITATE CPD/450mL/rt Methylene blue-treated	CRYO Thaw CPD Methyl Blue	6
CRYOPRECIPITATE	EA926	Yes	Thawed CRYOPRECIPITATE	Thawed CRYOPRECIPITATE CPD/450mL/rt Riboflavin-treated	CRYO Thaw CPD Ribo	6
CRYOPRECIPITATE	EA927	Yes	Thawed POOLED CRYOPRECIPITATE	Thawed POOLED CRYOPRECIPITATE NS/XX/rt 2 units	CRYO Pool Thaw NS 2U	6
CRYOPRECIPITATE	EA928	Yes	Thawed POOLED CRYOPRECIPITATE	Thawed POOLED CRYOPRECIPITATE NS/XX/rt 3 units	CRYO Pool Thaw NS 3U	6
CRYOPRECIPITATE	EA929	Yes	Thawed POOLED CRYOPRECIPITATE	Thawed POOLED CRYOPRECIPITATE NS/XX/rt 4 units	CRYO Pool Thaw NS 4U	6
CRYOPRECIPITATE	EA930	Yes	Thawed POOLED CRYOPRECIPITATE	Thawed POOLED CRYOPRECIPITATE NS/XX/rt 2 units Methylene blue-treated	CRYO Pool Thaw NS 2U Methyl Blue	6
CRYOPRECIPITATE	EA931	Yes	Thawed POOLED CRYOPRECIPITATE	Thawed POOLED CRYOPRECIPITATE NS/XX/rt 3 units Methylene blue-treated	CRYO Pool Thaw NS 3U Methyl Blue	6

Component	Product Code	Modifiable	Product Type	Long Name	Short Name	Maximum Storage Hours
CRYOPRECIPITATE	EA932	Yes	Thawed POOLED CRYOPRECIPITATE	Thawed POOLED CRYOPRECIPITATE NS/XX/rt 4 units Methylene blue-treated	CRYO Pool Thaw NS 4U Methyl Blue	6
CRYOPRECIPITATE	EA933	Yes	Thawed POOLED CRYOPRECIPITATE	Thawed POOLED CRYOPRECIPITATE NS/XX/rt 5 units Methylene blue-treated	CRYO Pool Thaw NS 5U Methyl Blue	6
CRYOPRECIPITATE	EA934	Yes	Thawed POOLED CRYOPRECIPITATE	Thawed POOLED CRYOPRECIPITATE NS/XX/rt 2 units Riboflavin-treated	CRYO Pool Thaw NS 2U Ribo	6
CRYOPRECIPITATE	EA935	Yes	Thawed POOLED CRYOPRECIPITATE	Thawed POOLED CRYOPRECIPITATE NS/XX/rt 3 units Riboflavin-treated	CRYO Pool Thaw NS 3U Ribo	6
CRYOPRECIPITATE	EA936	Yes	Thawed POOLED CRYOPRECIPITATE	Thawed POOLED CRYOPRECIPITATE NS/XX/rt 4 units Riboflavin-treated	CRYO Pool Thaw NS 4U Ribo	6
CRYOPRECIPITATE	EA937	Yes	Thawed POOLED CRYOPRECIPITATE	Thawed POOLED CRYOPRECIPITATE NS/XX/rt 5 units Riboflavin-treated	CRYO Pool Thaw NS 5U Ribo	6
PLATELETS	EA938	Yes	Apheresis PLATELETS	Apheresis PLATELETS ACD-A/XX/20-24C Open ResLeu:<1E6	PLT AFR ACD-A OPN LUKOPR	4
PLATELETS	EA939	No	Apheresis PLATELETS	Apheresis PLATELETS PAS-E/XX/20-24C Open ResLeu:<1E6	PLT AFR PAS-E OPN LUKOPR	4
PLATELETS	EA940	No	POOLED PLATELETS	POOLED PLATELETS PAS-E/XX/20-24C ResLeu:<1E6 Plasma reduced/Plasma added Buffy coat plts prep 5 units	PLT Pool PAS-E LUKOPR PLS Red/PA BUFCT 5U	120
PLATELETS	EA941	No	POOLED PLATELETS	POOLED PLATELETS PAS-E/XX/20-24C Open ResLeu:<1E6 Plasma reduced/Plasma added Buffy coat plts prep 5 units	PLT Pool PAS-E OPN LUKOPR PLS Red/PA BUFCT 5U	4
PLATELETS	EA942	No	POOLED PLATELETS	POOLED PLATELETS PAS-E/XX/20-24C Irradiated ResLeu:<1E6 Plasma reduced/Plasma added Buffy coat plts prep 5 units	PLT Pool PAS-E IRD LUKOPR PLS Red/PA BUFCT 5U	120
PLATELETS	EA943	No	POOLED PLATELETS	POOLED PLATELETS PAS-E/XX/20-24C Open Irradiated ResLeu:<1E6 Plasma reduced/Plasma added Buffy coat plts prep 5 units	PLT Pool PAS-E OPN IRD LUKOPR PLS Red/PA BUFCT 5U	4
PLATELETS	EA944	No	POOLED PLATELETS	POOLED PLATELETS PAS-E/XX/20-24C ResLeu:<1E6 Plasma reduced/Plasma added Buffy coat plts prep 6 units	PLT Pool PAS-E LUKOPR PLS Red/PA BUFCT 6U	120
PLATELETS	EA945	No	POOLED PLATELETS	POOLED PLATELETS PAS-E/XX/20-24C Open ResLeu:<1E6 Plasma reduced/Plasma added Buffy coat plts prep 6 units	PLT Pool PAS-E OPN LUKOPR PLS Red/PA BUFCT 6U	4
PLATELETS	EA946	No	POOLED PLATELETS	POOLED PLATELETS PAS-E/XX/20-24C Irradiated ResLeu:<1E6 Plasma reduced/Plasma added Buffy coat plts prep 6 units	PLT Pool PAS-E IRD LUKOPR PLS Red/PA BUFCT 6U	120
PLATELETS	EA947	No	POOLED PLATELETS	POOLED PLATELETS PAS-E/XX/20-24C Open Irradiated ResLeu:<1E6 Plasma reduced/Plasma added Buffy coat plts prep 6 units	PLT Pool PAS-E OPN IRD LUKOPR PLS Red/PA BUFCT 6U	4
CRYOPRECIPITATE	EA948	No	Thawed POOLED CRYOPRECIPITATE	Thawed POOLED CRYOPRECIPITATE NS/XX/rt Quar:>=112d/retested 2 units	CRYO Pool Thaw NS QUAR 2U	6
CRYOPRECIPITATE	EA949	No	Thawed POOLED CRYOPRECIPITATE	Thawed POOLED CRYOPRECIPITATE NS/XX/rt Quar:>=112d/retested 3 units	CRYO Pool Thaw NS QUAR 3U	6
CRYOPRECIPITATE	EA950	No	Thawed POOLED CRYOPRECIPITATE	Thawed POOLED CRYOPRECIPITATE NS/XX/rt Quar:>=112d/retested 4 units	CRYO Pool Thaw NS QUAR 4U	6
CRYOPRECIPITATE	EA951	No	Thawed POOLED CRYOPRECIPITATE	Thawed POOLED CRYOPRECIPITATE NS/XX/rt Quar:>=112d/retested 5 units	CRYO Pool Thaw NS QUAR 5U	6

Component	Product Code	Modifiable	Product Type	Long Name	Short Name	Maximum Storage Hours
PLATELETS	EA952	Yes	POOLED PLATELETS	POOLED PLATELETS CPD/XX/20-24C ResLeu:<1E6 5 units Riboflavin-treated	PLT Pool CPD LUKOPR 5U Ribo	120
FRESH FROZEN PLASMA	EA953	Yes	Apheresis CONVALESCENT PLASMA	Apheresis CONVALESCENT PLASMA NaCitrate/XX/<--25C Pathogen reduced: Method NS Infection NS	PLASMA AFR Conv NaCit PatRed M NS Infection NS	8760
RED BLOOD CELLS	EA954	Yes	RED BLOOD CELLS	RED BLOOD CELLS CPD>AS1/XX/refg Open ResLeu:<5E6 LowVol:anticoag not adj	RBC CPD>AS1 OPN LUKOPR LowVol	24
RED BLOOD CELLS	EA955	No	RED BLOOD CELLS	RED BLOOD CELLS CPD>SAGM/XX/refg Irradiated ResLeu:<5E6 Hct 0.75-0.9	RBC CPD>SAGM IRD LUKOPR Hct 0.75-0.9	672
WHOLE BLOOD	EA956	Yes	WHOLE BLOOD	WHOLE BLOOD CPD/XX/refg ResLeu:<5E6	WB CPD LUKOPR	504
WHOLE BLOOD	EA957	Yes	WHOLE BLOOD	WHOLE BLOOD CPD/XX/refg ResLeu:<5E6 Plasma reduced	WB CPD LUKOPR PLS Red	504
WHOLE BLOOD	EA958	Yes	WHOLE BLOOD	WHOLE BLOOD CPD/XX/refg Irradiated ResLeu:<5E6	WB CPD IRD LUKOPR	504
WHOLE BLOOD	EA959	Yes	WHOLE BLOOD	WHOLE BLOOD CPD/XX/refg Irradiated ResLeu:<5E6 Plasma reduced	WB CPD IRD LUKOPR PLS Red	504
PLATELETS	EA960	No	Apheresis PLATELETS	Apheresis PLATELETS PAS-E/XX/20-24C Irradiated ResLeu:<5E6 Bacterial monitoring	PLT AFR PAS-E IRD LUKOPR BacMtr	120
PLATELETS	EA961	No	Apheresis PLATELETS	Apheresis PLATELETS PAS-E/XX/20-24C Irradiated ResLeu:<5E6 Supernat reduced	PLT AFR PAS-E IRD LUKOPR SUPRed	120
PLATELETS	EA962	No	Washed Thawed Apheresis PLATELETS	Washed Thawed Apheresis PLATELETS PAS-E/XX/20-24C Irradiated ResLeu:<5E6	PLT AFR Thaw Wash PAS-E IRD LUKOPR	4
PLATELETS	EA963	Yes	Frozen Apheresis PLATELETS	Frozen Apheresis PLATELETS DMSO/XX/<--80C Irradiated ResLeu:<5E6	PLT AFR Froz DMSO IRD LUKOPR	8760
PLATELETS	EA964	Yes	POOLED PLATELETS	POOLED PLATELETS CP2D/XX/20-24C ResLeu:<5E6 5 units Bacterial monitoring >=24h	PLT Pool CP2D LUKOPR 5U BacMtr >=24h	120
PLATELETS	EA965	Yes	POOLED PLATELETS	POOLED PLATELETS CP2D/XX/20-24C Irradiated ResLeu:<5E6 5 units Bacterial monitoring >=24h	PLT Pool CP2D IRD LUKOPR 5U BacMtr >=24h	120
PLATELETS	EA966	Yes	POOLED PLATELETS	POOLED PLATELETS CP2D/XX/20-24C ResLeu:<5E6 5 units Bacterial monitoring >=36h	PLT Pool CP2D LUKOPR 5U BacMtr >=36h	120
PLATELETS	EA967	Yes	POOLED PLATELETS	POOLED PLATELETS CP2D/XX/20-24C Irradiated ResLeu:<5E6 5 units Bacterial monitoring >=36h	PLT Pool CP2D IRD LUKOPR 5U BacMtr >=36h	120
PLATELETS	EA968	No	Frozen PLATELETS	Frozen PLATELETS CP2D/XX/<--18C For mnf:noninjectable	PLT Froz CP2D MNFNI	8760
PLATELETS	EA969	No	Frozen POOLED PLATELETS	Frozen POOLED PLATELETS CP2D/XX/<--18C For mnf:noninjectable Irradiated ResLeu:<5E6	PLT Pool Froz CP2D MNFNI IRD LUKOPR	8760
RED BLOOD CELLS	EA970	Yes	Washed RED BLOOD CELLS	Washed RED BLOOD CELLS None/XX/refg RBC irradiated ResLeu:NS Plasma added	RBC Wash None RBC IRD LUKOPR PA	24
RED BLOOD CELLS	EA971	Yes	Washed Apheresis RED BLOOD CELLS	Washed Apheresis RED BLOOD CELLS None/XX/refg RBC irradiated ResLeu:NS Plasma added 1st container	RBC AFR Wash None RBC IRD LUKOPR PA 1C	24
RED BLOOD CELLS	EA972	Yes	Washed Apheresis RED BLOOD CELLS	Washed Apheresis RED BLOOD CELLS None/XX/refg RBC irradiated ResLeu:NS Plasma added 2nd container	RBC AFR Wash None RBC IRD LUKOPR PA 2C	24

Component	Product Code	Modifiable	Product Type	Long Name	Short Name	Maximum Storage Hours
PLATELETS	EA973	Yes	Apheresis PLATELETS	Apheresis PLATELETS ACD-A/XX/20-24C Irradiated ResLeu:<5E6 Plasma reduced/Saline added 4th container	PLT AFR ACD-A IRD LUKOPR PLS Red/SAL Add 4C	120
FRESH FROZEN PLASMA	EA974	Yes	Thawed Apheresis FRESH FROZEN PLASMA	Thawed Apheresis FRESH FROZEN PLASMA ACD-A/XX/refg Open Irradiated 1st container	FFP AFR Thaw ACD-A OPN IRD 1C	24
FRESH FROZEN PLASMA	EA975	Yes	Thawed Apheresis FRESH FROZEN PLASMA	Thawed Apheresis FRESH FROZEN PLASMA ACD-A/XX/refg Open Irradiated 2nd container	FFP AFR Thaw ACD-A OPN IRD 2C	24
FRESH FROZEN PLASMA	EA976	Yes	Thawed Apheresis FRESH FROZEN PLASMA	Thawed Apheresis FRESH FROZEN PLASMA ACD-A/XX/refg Open Irradiated 3rd container	FFP AFR Thaw ACD-A OPN IRD 3C	24
FRESH FROZEN PLASMA	EA977	Yes	Thawed Apheresis FRESH FROZEN PLASMA	Thawed Apheresis FRESH FROZEN PLASMA ACD-A/XX/refg Open Irradiated 4th container	FFP AFR Thaw ACD-A OPN IRD 4C	24
FRESH FROZEN PLASMA	EA978	Yes	Apheresis PLASMA	Apheresis PLASMA ACD-A/XX/<=-18C ResLeu:<5E6 1st container	PLASMA AFR ACD-A LUKOPR 1C	8760
FRESH FROZEN PLASMA	EA979	Yes	Apheresis PLASMA	Apheresis PLASMA ACD-A/XX/<=-18C ResLeu:<5E6 2nd container	PLASMA AFR ACD-A LUKOPR 2C	8760
FRESH FROZEN PLASMA	EA980	Yes	Apheresis PLASMA	Apheresis PLASMA ACD-A/XX/<=-18C ResLeu:<5E6 3rd container	PLASMA AFR ACD-A LUKOPR 3C	8760
FRESH FROZEN PLASMA	EA981	Yes	Apheresis PLASMA	Apheresis PLASMA ACD-A/XX/<=-18C ResLeu:<5E6 4th container	PLASMA AFR ACD-A LUKOPR 4C	8760
FRESH FROZEN PLASMA	EA982	Yes	Thawed Apheresis PLASMA	Thawed Apheresis PLASMA ACD-A/XX/refg ResLeu:<5E6 1st container	PLASMA AFR Thaw ACD-A LUKOPR 1C	120
FRESH FROZEN PLASMA	EA983	Yes	Thawed Apheresis PLASMA	Thawed Apheresis PLASMA ACD-A/XX/refg ResLeu:<5E6 2nd container	PLASMA AFR Thaw ACD-A LUKOPR 2C	120
FRESH FROZEN PLASMA	EA984	Yes	Thawed Apheresis PLASMA	Thawed Apheresis PLASMA ACD-A/XX/refg ResLeu:<5E6 3rd container	PLASMA AFR Thaw ACD-A LUKOPR 3C	120
FRESH FROZEN PLASMA	EA985	Yes	Thawed Apheresis PLASMA	Thawed Apheresis PLASMA ACD-A/XX/refg ResLeu:<5E6 4th container	PLASMA AFR Thaw ACD-A LUKOPR 4C	120
PLATELETS	EA986	Yes	Apheresis PLATELETS	Apheresis PLATELETS ACD-A>PAS-C/XX/20-24C Irradiated ResLeu:<5E6 1st container <3E11 plts	PLT AFR ACD-A>PAS-C IRD LUKOPR 1C	120
PLATELETS	EA987	Yes	Apheresis PLATELETS	Apheresis PLATELETS ACD-A>PAS-C/XX/20-24C Irradiated ResLeu:<5E6 2nd container <3E11 plts	PLT AFR ACD-A>PAS-C IRD LUKOPR 2C	120
PLATELETS	EA988	Yes	Apheresis PLATELETS	Apheresis PLATELETS ACD-A>PAS-C/XX/20-24C Irradiated ResLeu:<5E6 3rd container <3E11 plts	PLT AFR ACD-A>PAS-C IRD LUKOPR 3C	120

Component	Product Code	Modifiable	Product Type	Long Name	Short Name	Maximum Storage Hours
PLATELETS	EA989	Yes	Apheresis PLATELETS	Apheresis PLATELETS ACD-A>PAS-C/XX/20-24C Open Irradiated ResLeu:<5E6 Plasma reduced/Saline added 1st container <3E11 plts	PLT AFR ACD-A>PAS-C OPN IRD LUKOPR PLS Red/SAL Add 1C	4
PLATELETS	EA990	Yes	Apheresis PLATELETS	Apheresis PLATELETS ACD-A>PAS-C/XX/20-24C Open Irradiated ResLeu:<5E6 Plasma reduced/Saline added 2nd container <3E11 plts	PLT AFR ACD-A>PAS-C OPN IRD LUKOPR PLS Red/SAL Add 2C	4
PLATELETS	EA991	Yes	Apheresis PLATELETS	Apheresis PLATELETS ACD-A>PAS-C/XX/20-24C Open Irradiated ResLeu:<5E6 Plasma reduced/Saline added 3rd container <3E11 plts	PLT AFR ACD-A>PAS-C OPN IRD LUKOPR PLS Red/SAL Add 3C	4
PLATELETS	EA992	No	Apheresis PLATELETS	Apheresis PLATELETS ACD-A>PAS-E/XX/20-24C ResLeu:<1E6	PLT AFR ACD-A>PAS-E LUKOPR	120
PLATELETS	EA993	No	Apheresis PLATELETS	Apheresis PLATELETS ACD-A>PAS-E/XX/20-24C ResLeu:<1E6 1st container	PLT AFR ACD-A>PAS-E LUKOPR 1C	120
PLATELETS	EA994	No	Apheresis PLATELETS	Apheresis PLATELETS ACD-A>PAS-E/XX/20-24C ResLeu:<1E6 2nd container	PLT AFR ACD-A>PAS-E LUKOPR 2C	120
PLATELETS	EA995	No	Apheresis PLATELETS	Apheresis PLATELETS ACD-A>PAS-E/XX/20-24C ResLeu:<1E6 3rd container	PLT AFR ACD-A>PAS-E LUKOPR 3C	120
PLATELETS	EA996	No	Apheresis PLATELETS	Apheresis PLATELETS ACD-A>PAS-E/XX/20-24C Irradiated ResLeu:<1E6	PLT AFR ACD-A>PAS-E IRD LUKOPR	120
PLATELETS	EA997	Yes	Apheresis PLATELETS	Apheresis PLATELETS None/XX/20-24C Open ResLeu:<5E6 Plasma reduced/Saline added 1st container	PLT AFR None OPN LUKOPR PLS Red/SAL Add 1C	4
PLATELETS	EA998	Yes	Apheresis PLATELETS	Apheresis PLATELETS None/XX/20-24C Open ResLeu:<5E6 Plasma reduced/Saline added 2nd container	PLT AFR None OPN LUKOPR PLS Red/SAL Add 2C	4
PLATELETS	EA999	Yes	Apheresis PLATELETS	Apheresis PLATELETS None/XX/20-24C Open ResLeu:<5E6 Plasma reduced/Saline added 1st container Psoralen-treated	PLT AFR None OPN LUKOPR PLS Red/SAL Add 1C Psoraln	4
PLATELETS	EB000	Yes	Apheresis PLATELETS	Apheresis PLATELETS None/XX/20-24C Open ResLeu:<5E6 Plasma reduced/Saline added 2nd container Psoralen-treated	PLT AFR None OPN LUKOPR PLS Red/SAL Add 2C Psoraln	4
PLATELETS	EB001	Yes	Apheresis PLATELETS	Apheresis PLATELETS None/XX/20-24C Open Irradiated ResLeu:<5E6 Plasma reduced/Saline added 1st container	PLT AFR None OPN IRD LUKOPR PLS Red/SAL Add 1C	4
PLATELETS	EB002	Yes	Apheresis PLATELETS	Apheresis PLATELETS None/XX/20-24C Open Irradiated ResLeu:<5E6 Plasma reduced/Saline added 2nd container	PLT AFR None OPN IRD LUKOPR PLS Red/SAL Add 2C	4
PLATELETS	EB003	Yes	POOLED PLATELETS	POOLED PLATELETS None/XX/20-24C Open ResLeu:<5E6 Plasma reduced/Saline added Buffy coat plts prep Psoralen-treated	PLT Pool None OPN LUKOPR PLS Red/SAL Add BUFCT Psoraln	4
RED BLOOD CELLS	EB004	Yes	Deglycerolized RED BLOOD CELLS	Deglycerolized RED BLOOD CELLS AS3/XX/refg Open RBC irradiated ResLeu:NS Plasma added	RBC Deg AS3 OPN RBC IRD LUKOPR PA	24
RED BLOOD CELLS	EB005	Yes	Deglycerolized Apheresis RED BLOOD CELLS	Deglycerolized Apheresis RED BLOOD CELLS AS3/XX/refg Open RBC irradiated ResLeu:NS Plasma added 1st container	RBC AFR Deg AS3 OPN RBC IRD LUKOPR PA 1C	24

Component	Product Code	Modifiable	Product Type	Long Name	Short Name	Maximum Storage Hours
RED BLOOD CELLS	EB006	Yes	Deglycerolized Apheresis RED BLOOD CELLS	Deglycerolized Apheresis RED BLOOD CELLS AS3/XX/refg Open RBC irradiated ResLeu:NS Plasma added 2nd container	RBC AFR Deg AS3 OPN RBC IRD LUKOPR PA 2C	24
RED BLOOD CELLS	EB007	Yes	Apheresis RED BLOOD CELLS	Apheresis RED BLOOD CELLS ACD-A>AS1/XX/refg Open RBC irradiated ResLeu:NS Plasma added	RBC AFR ACD-A>AS1 OPN RBC IRD LUKOPR PA	24
RED BLOOD CELLS	EB008	Yes	Apheresis RED BLOOD CELLS	Apheresis RED BLOOD CELLS ACD-A>AS1/XX/refg Open RBC irradiated ResLeu:NS Plasma added 1st container	RBC AFR ACD-A>AS1 OPN RBC IRD LUKOPR PA 1C	24
RED BLOOD CELLS	EB009	Yes	Apheresis RED BLOOD CELLS	Apheresis RED BLOOD CELLS ACD-A>AS1/XX/refg Open RBC irradiated ResLeu:NS Plasma added 2nd container	RBC AFR ACD-A>AS1 OPN RBC IRD LUKOPR PA 2C	24
RED BLOOD CELLS	EB010	Yes	RED BLOOD CELLS	RED BLOOD CELLS CPD>AS1/XX/refg Open RBC irradiated ResLeu:NS Plasma added LowVol:anticoag not adj	RBC CPD>AS1 OPN RBC IRD LUKOPR PA LowVol	24
RED BLOOD CELLS	EB011	Yes	RED BLOOD CELLS	RED BLOOD CELLS CPD>AS1/XX/refg Open RBC irradiated ResLeu:NS Plasma added LowVol:anticoag adj	RBC CPD>AS1 OPN RBC IRD LUKOPR PA LowVol	24
RED BLOOD CELLS	EB012	Yes	RED BLOOD CELLS	RED BLOOD CELLS CPD/XX/refg Open RBC irradiated ResLeu:NS Plasma added LowVol:anticoag not adj	RBC CPD OPN RBC IRD LUKOPR PA LowVol	24
RED BLOOD CELLS	EB013	Yes	RED BLOOD CELLS	RED BLOOD CELLS CPD/XX/refg Open RBC irradiated ResLeu:NS Plasma added LowVol:anticoag adj	RBC CPD OPN RBC IRD LUKOPR PA LowVol	24
RED BLOOD CELLS	EB014	Yes	RED BLOOD CELLS	RED BLOOD CELLS CPDA-1/XX/refg Open RBC irradiated ResLeu:NS Plasma added LowVol:anticoag not adj	RBC CPDA-1 OPN RBC IRD LUKOPR PA LowVol	24
RED BLOOD CELLS	EB015	Yes	RED BLOOD CELLS	RED BLOOD CELLS CPDA-1/XX/refg Open RBC irradiated ResLeu:NS Plasma added LowVol:anticoag adj	RBC CPDA-1 OPN RBC IRD LUKOPR PA LowVol	24
RED BLOOD CELLS	EB016	Yes	Washed Apheresis RED BLOOD CELLS	Washed Apheresis RED BLOOD CELLS None/XX/refg Open ResLeu:NS Plasma added 1st container	RBC AFR Wash None OPN LUKOPR PA 1C	24
RED BLOOD CELLS	EB017	Yes	Washed Apheresis RED BLOOD CELLS	Washed Apheresis RED BLOOD CELLS None/XX/refg Open ResLeu:NS Plasma added 2nd container	RBC AFR Wash None OPN LUKOPR PA 2C	24
PLATELETS	EB018	Yes	Apheresis PLATELETS	Apheresis PLATELETS ACD-A/XX/20-24C Plasma reduced 2nd container <3E11 plts	PLT AFR ACD-A PLS Red 2C	120
PLATELETS	EB019	Yes	Apheresis PLATELETS	Apheresis PLATELETS ACD-A/XX/20-24C Plasma reduced 3rd container <3E11 plts	PLT AFR ACD-A PLS Red 3C	120
PLATELETS	EB020	Yes	Apheresis PLATELETS	Apheresis PLATELETS ACD-A/XX/20-24C Irradiated Plasma reduced 2nd container <3E11 plts	PLT AFR ACD-A IRD PLS Red 2C	120
PLATELETS	EB021	Yes	Apheresis PLATELETS	Apheresis PLATELETS ACD-A/XX/20-24C Irradiated Plasma reduced 3rd container <3E11 plts	PLT AFR ACD-A IRD PLS Red 3C	120
PLATELETS	EB022	Yes	Apheresis PLATELETS	Apheresis PLATELETS ACD-A/XX/20-24C Plasma reduced 3rd container <3E11 plts Psoralen-treated	PLT AFR ACD-A PLS Red 3C Psoraln	120
PLATELETS	EB023	Yes	POOLED PLATELETS	POOLED PLATELETS CP2D/XX/20-24C Irradiated ResLeu:<5E6 4 units Bacterial monitoring	PLT Pool CP2D IRD LUKOPR 4U BacMtr	120
PLATELETS	EB024	Yes	POOLED PLATELETS	POOLED PLATELETS CP2D/XX/20-24C Irradiated ResLeu:<5E6 5 units Bacterial monitoring	PLT Pool CP2D IRD LUKOPR 5U BacMtr	120
PLATELETS	EB025	Yes	POOLED PLATELETS	POOLED PLATELETS CP2D/XX/20-24C Irradiated ResLeu:<5E6 6 units Bacterial monitoring	PLT Pool CP2D IRD LUKOPR 6U BacMtr	120
PLATELETS	EB026	Yes	POOLED PLATELETS	POOLED PLATELETS CP2D/XX/20-24C ResLeu:<5E6 <3E11 plts Bacterial monitoring	PLT Pool CP2D LUKOPR BacMtr	120

Component	Product Code	Modifiable	Product Type	Long Name	Short Name	Maximum Storage Hours
PLATELETS	EB027	Yes	POOLED PLATELETS	POOLED PLATELETS CP2D/XX/20-24C Irradiated ResLeu:<5E6 <3E11 plts Bacterial monitoring	PLT Pool CP2D IRD LUKOPR BacMtr	120
PLATELETS	EB028	No	POOLED PLATELETS	POOLED PLATELETS CPD/XX/20-24C For mnf:noninjectable Irradiated ResLeu:<5E6	PLT Pool CPD MNFNI IRD LUKOPR	120
PLATELETS	EB029	No	POOLED PLATELETS	POOLED PLATELETS CPD/XX/20-24C For mnf:noninjectable ResLeu:<5E6 <3E11 plts	PLT Pool CPD MNFNI LUKOPR	120
PLATELETS	EB030	No	POOLED PLATELETS	POOLED PLATELETS CPD/XX/20-24C For mnf:noninjectable Irradiated ResLeu:<5E6 <3E11 plts	PLT Pool CPD MNFNI IRD LUKOPR	120
PLATELETS	EB031	No	POOLED PLATELETS	POOLED PLATELETS CP2D/XX/20-24C For mnf:noninjectable ResLeu:<5E6	PLT Pool CP2D MNFNI LUKOPR	120
PLATELETS	EB032	No	POOLED PLATELETS	POOLED PLATELETS CP2D/XX/20-24C For mnf:noninjectable Irradiated ResLeu:<5E6	PLT Pool CP2D MNFNI IRD LUKOPR	120
PLATELETS	EB033	No	POOLED PLATELETS	POOLED PLATELETS CP2D/XX/20-24C For mnf:noninjectable ResLeu:<5E6 <3E11 plts	PLT Pool CP2D MNFNI LUKOPR	120
PLATELETS	EB034	No	POOLED PLATELETS	POOLED PLATELETS CP2D/XX/20-24C For mnf:noninjectable Irradiated ResLeu:<5E6 <3E11 plts	PLT Pool CP2D MNFNI IRD LUKOPR	120
PLATELETS	EB035	No	Frozen POOLED PLATELETS	Frozen POOLED PLATELETS CP2D/XX/<=-18C For mnf:noninjectable ResLeu:<5E6 <3E11 plts	PLT Pool Froz CP2D MNFNI LUKOPR	8760
PLATELETS	EB036	No	Frozen POOLED PLATELETS	Frozen POOLED PLATELETS CP2D/XX/<=-18C For mnf:noninjectable Irradiated ResLeu:<5E6 <3E11 plts	PLT Pool Froz CP2D MNFNI IRD LUKOPR	8760
PLATELETS	EB037	No	Frozen POOLED PLATELETS	Frozen POOLED PLATELETS CPD/XX/<=-18C For mnf:noninjectable Irradiated ResLeu:<5E6	PLT Pool Froz CPD MNFNI IRD LUKOPR	8760
PLATELETS	EB038	No	Frozen POOLED PLATELETS	Frozen POOLED PLATELETS CPD/XX/<=-18C For mnf:noninjectable ResLeu:<5E6 <3E11 plts	PLT Pool Froz CPD MNFNI LUKOPR	8760
PLATELETS	EB039	No	Frozen POOLED PLATELETS	Frozen POOLED PLATELETS CPD/XX/<=-18C For mnf:noninjectable Irradiated ResLeu:<5E6 <3E11 plts	PLT Pool Froz CPD MNFNI IRD LUKOPR	8760
RED BLOOD CELLS	EB040	No	Apheresis RED BLOOD CELLS	Apheresis RED BLOOD CELLS ACD-A>AS1/XX/refg For mnf:injectable Irradiated 1st container	RBC AFR ACD-A>AS1 MNFI IRD 1C	672
RED BLOOD CELLS	EB041	No	Apheresis RED BLOOD CELLS	Apheresis RED BLOOD CELLS ACD-A>AS1/XX/refg For mnf:injectable Irradiated 2nd container	RBC AFR ACD-A>AS1 MNFI IRD 2C	672
RED BLOOD CELLS	EB042	No	Apheresis RED BLOOD CELLS	Apheresis RED BLOOD CELLS ACD-A>AS3/XX/refg For mnf:injectable Irradiated 1st container	RBC AFR ACD-A>AS3 MNFI IRD 1C	672
RED BLOOD CELLS	EB043	No	Apheresis RED BLOOD CELLS	Apheresis RED BLOOD CELLS ACD-A>AS3/XX/refg For mnf:injectable Irradiated 2nd container	RBC AFR ACD-A>AS3 MNFI IRD 2C	672
RED BLOOD CELLS	EB044	No	Apheresis RED BLOOD CELLS	Apheresis RED BLOOD CELLS ACD-A>AS3/XX/refg For mnf:injectable Irradiated ResLeu:<5E6 1st container	RBC AFR ACD-A>AS3 MNFI IRD LUKOPR 1C	672
RED BLOOD CELLS	EB045	No	Apheresis RED BLOOD CELLS	Apheresis RED BLOOD CELLS ACD-A>AS3/XX/refg For mnf:injectable Irradiated ResLeu:<5E6 2nd container	RBC AFR ACD-A>AS3 MNFI IRD LUKOPR 2C	672
FRESH FROZEN PLASMA	EB046	No	Thawed PLASMA	Thawed PLASMA CP2D/XX/rt For mnf:noninjectable Cryo reduced	PLASMA Thaw CP2D MNFNI CRYORed	120
PLATELETS	EB047	Yes	Apheresis PLATELETS	Apheresis PLATELETS ACD-A/XX/20-24C Open Irradiated ResLeu:<5E6 Plasma reduced/Saline added 2nd container <3E11 plts	PLT AFR ACD-A OPN IRD LUKOPR PLS Red/SAL Add 2C	4

Component	Product Code	Modifiable	Product Type	Long Name	Short Name	Maximum Storage Hours
RED BLOOD CELLS	EB048	Yes	RED BLOOD CELLS	RED BLOOD CELLS CP2D>AS3/500mL/refg ResLeu:NS Plasma added	RBC CP2D>AS3 LUKOPR PA	1008
RED BLOOD CELLS	EB049	Yes	RED BLOOD CELLS	RED BLOOD CELLS CP2D>AS3/500mL/refg RBC irradiated ResLeu:NS Plasma added	RBC CP2D>AS3 RBC IRD LUKOPR PA	672
RED BLOOD CELLS	EB050	Yes	Apheresis RED BLOOD CELLS	Apheresis RED BLOOD CELLS ACD-A>AS1/XX/refg RBC irradiated ResLeu:NS Plasma added 1st container	RBC AFR ACD-A>AS1 RBC IRD LUKOPR PA 1C	672
RED BLOOD CELLS	EB051	Yes	Apheresis RED BLOOD CELLS	Apheresis RED BLOOD CELLS ACD-A>AS1/XX/refg RBC irradiated ResLeu:NS Plasma added 2nd container	RBC AFR ACD-A>AS1 RBC IRD LUKOPR PA 2C	672
RED BLOOD CELLS	EB052	Yes	Apheresis RED BLOOD CELLS	Apheresis RED BLOOD CELLS ACD-A>AS3/XX/refg RBC irradiated ResLeu:NS Plasma added	RBC AFR ACD-A>AS3 RBC IRD LUKOPR PA	672
RED BLOOD CELLS	EB053	Yes	Apheresis RED BLOOD CELLS	Apheresis RED BLOOD CELLS ACD-A>AS3/XX/refg RBC irradiated ResLeu:NS Plasma added 1st container	RBC AFR ACD-A>AS3 RBC IRD LUKOPR PA 1C	672
RED BLOOD CELLS	EB054	Yes	Apheresis RED BLOOD CELLS	Apheresis RED BLOOD CELLS ACD-A>AS3/XX/refg RBC irradiated ResLeu:NS Plasma added 2nd container	RBC AFR ACD-A>AS3 RBC IRD LUKOPR PA 2C	672
RED BLOOD CELLS	EB055	Yes	Apheresis RED BLOOD CELLS	Apheresis RED BLOOD CELLS CP2D>AS3/XX/refg ResLeu:NS Plasma added	RBC AFR CP2D>AS3 LUKOPR PA	1008
RED BLOOD CELLS	EB056	Yes	Apheresis RED BLOOD CELLS	Apheresis RED BLOOD CELLS CP2D>AS3/XX/refg ResLeu:NS Plasma added 1st container	RBC AFR CP2D>AS3 LUKOPR PA 1C	1008
RED BLOOD CELLS	EB057	Yes	Apheresis RED BLOOD CELLS	Apheresis RED BLOOD CELLS CP2D>AS3/XX/refg ResLeu:NS Plasma added 2nd container	RBC AFR CP2D>AS3 LUKOPR PA 2C	1008
RED BLOOD CELLS	EB058	Yes	Apheresis RED BLOOD CELLS	Apheresis RED BLOOD CELLS CP2D>AS3/XX/refg RBC irradiated ResLeu:NS Plasma added	RBC AFR CP2D>AS3 RBC IRD LUKOPR PA	672
RED BLOOD CELLS	EB059	Yes	Apheresis RED BLOOD CELLS	Apheresis RED BLOOD CELLS CP2D>AS3/XX/refg RBC irradiated ResLeu:NS Plasma added 1st container	RBC AFR CP2D>AS3 RBC IRD LUKOPR PA 1C	672
RED BLOOD CELLS	EB060	Yes	Apheresis RED BLOOD CELLS	Apheresis RED BLOOD CELLS CP2D>AS3/XX/refg RBC irradiated ResLeu:NS Plasma added 2nd container	RBC AFR CP2D>AS3 RBC IRD LUKOPR PA 2C	672
RED BLOOD CELLS	EB061	No	RED BLOOD CELLS	RED BLOOD CELLS CPD>SAGM/500mL/refg Open Irradiated ResLeu:<5E6 Supernat rem/SD-Plasma added	RBC CPD>SAGM OPN IRD LUKOPR SR/SD-PA	24
PLATELETS	EB062	Yes	POOLED PLATELETS	POOLED PLATELETS CPD>PAS-E/XX/20-24C Open ResLeu:<5E6 Plasma reduced Buffy coat plts prep Psoralen-treated	PLT Pool CPD>PAS-E OPN LUKOPR PLS Red BUFCT Psoraln	4
RED BLOOD CELLS	EB063	Yes	Apheresis RED BLOOD CELLS	Apheresis RED BLOOD CELLS CP2D>AS3/XX/refg Open RBC irradiated ResLeu:NS Supernat rem/Plasma added 1st container	RBC AFR CP2D>AS3 OPN RBC IRD LUKOPR SR/PA 1C	24
RED BLOOD CELLS	EB064	Yes	Apheresis RED BLOOD CELLS	Apheresis RED BLOOD CELLS CP2D>AS3/XX/refg Open RBC irradiated ResLeu:NS Supernat rem/Plasma added 2nd container	RBC AFR CP2D>AS3 OPN RBC IRD LUKOPR SR/PA 2C	24
PLATELETS	EB065	No	Apheresis PLATELETS	Apheresis PLATELETS ACD-A/XX/20-24C Not for tx or mnf Irradiated ResLeu:<5E6	PLT AFR ACD-A NMT IRD LUKOPR	120
PLATELETS	EB066	No	Apheresis PLATELETS	Apheresis PLATELETS ACD-A/XX/20-24C Not for tx or mnf Irradiated ResLeu:<5E6 1st container	PLT AFR ACD-A NMT IRD LUKOPR 1C	120
PLATELETS	EB067	No	Apheresis PLATELETS	Apheresis PLATELETS ACD-A/XX/20-24C Not for tx or mnf Irradiated ResLeu:<5E6 2nd container	PLT AFR ACD-A NMT IRD LUKOPR 2C	120

Component	Product Code	Modifiable	Product Type	Long Name	Short Name	Maximum Storage Hours
PLATELETS	EB068	No	Apheresis PLATELETS	Apheresis PLATELETS ACD-A/XX/20-24C Not for tx or mnf Irradiated ResLeu:<5E6 3rd container	PLT AFR ACD-A NMT IRD LUKOPR 3C	120
RED BLOOD CELLS	EB069	Yes	Washed RED BLOOD CELLS	Washed RED BLOOD CELLS PAGGS-M/XX/refg Irradiated ResLeu:<1E6	RBC Wash PAGGS-M IRD LUKOPR	336
PLATELETS	EB070	Yes	POOLED PLATELETS	POOLED PLATELETS CPD>PAS-E/XX/20-24C ResLeu:<1E6	PLT Pool CPD>PAS-E LUKOPR	120
PLATELETS	EB071	Yes	POOLED PLATELETS	POOLED PLATELETS CPD>PAS-E/XX/20-24C Irradiated ResLeu:<1E6	PLT Pool CPD>PAS-E IRD LUKOPR	120
PLATELETS	EB072	No	Apheresis PLATELETS	Apheresis PLATELETS PAS-E/XX/20-24C ResLeu:<1E6 Supernat rem/Plasma added Riboflavin-treated	PLT AFR PAS-E LUKOPR SR/PA Ribo	120
RED BLOOD CELLS	EB073	Yes	RED BLOOD CELLS	RED BLOOD CELLS CP2D>AS3/XX/refg Open ResLeu:<5E6 LowVol:anticoag not adj	RBC CP2D>AS3 OPN LUKOPR LowVol	24
RED BLOOD CELLS	EB074	Yes	RED BLOOD CELLS	RED BLOOD CELLS CP2D>AS3/450mL/refg Open ResLeu:<5E6 Plasma added	RBC CP2D>AS3 OPN LUKOPR PA	24
RED BLOOD CELLS	EB075	Yes	RED BLOOD CELLS	RED BLOOD CELLS CP2D>AS3/450mL/refg Open ResLeu:<5E6 Plasma reduced	RBC CP2D>AS3 OPN LUKOPR PLS Red	24
RED BLOOD CELLS	EB076	Yes	RED BLOOD CELLS	RED BLOOD CELLS CPD>AS1/450mL/refg Open ResLeu:<5E6 Plasma reduced	RBC CPD>AS1 OPN LUKOPR PLS Red	24
PLATELETS	EB077	No	Frozen PLATELETS	Frozen PLATELETS CPD/XX/<=-18C For mnf:noninjectable Irradiated	PLT Froz CPD MNFNI IRD	8760

This is the last page of *VBECs 2.3.4 Rev B Release Notes*.