



BAR CODE MEDICATION ADMINISTRATION (BCMA)

MANAGER'S USER MANUAL

Version 3.0
February 2004

(Revised January 2011)

Revision History

Each time this manual is updated, the Title Page lists the new revised date and this page describes the changes. If the Revised Pages column lists “All,” replace the existing manual with the reissued manual. If the Revised Pages column lists individual entries (e.g., 25, 32), either update the existing manual with the Change Pages Document or print the entire new manual.

Date	Revised Pages	Patch Number	Description
01/2011	i, iii-iv, 12-13, 54, 57, 59-64	PSB*3*42	<p>Removed field Scratch HFS Directory from the Parameters Tab, and replaced corresponding Site Parameters screen capture.</p> <p>Added Appendix A describing the new parameter tab created for the Indian Health Service (IHS) project.</p> <p>Updated Glossary and Index for Indian Health Service.</p> <p>REDACTED</p>
10/2009	i, iii-iv, 48a-48b, 56	PSB*3*47	<p>Added information for the new <i>Immunizations Documentation by BCMA Nightly Task</i> [PSB PX BCMA2PCE TASK] option that is added to the <i>Bar Code Medication Administration Manager</i> [PSB MGR] menu. PCE added to the glossary.</p> <p>REDACTED</p>
01/2009	All	PSB*3*28	<p>Reissue of manual to add new functionality in patch PSB*3*28 including the addition of a new unable to scan option, email notification feature, mode of patient record access and five rights override administration.</p> <p>REDACTED</p>

Table of Contents

Introduction.....	1
Benefits of BCMA V. 3.0.....	1
Benefits of This Manual.....	1
<i>Our Target Audience.....</i>	<i>1</i>
Other Sources of Information	2
<i>Background/Technical Information</i>	<i>2</i>
<i>Training Information.....</i>	<i>2</i>
<i>This Manual and Related Documentation.....</i>	<i>2</i>
Conventions Used in This Manual.....	2
Obtaining On-line Help.....	4
Setting Site Parameters for GUI BCMA.....	5
Signing on to GUI BCMA Site Parameters Application.....	5
Defining and Updating Site Parameters for Your Division	9
<i>Working with the Facility Tab.....</i>	<i>11</i>
<i>Working with the Parameters Tab</i>	<i>12</i>
<i>Working with the Default Answer Lists Tab</i>	<i>17</i>
<i>Working with the IV Parameters Tab.....</i>	<i>25</i>
<i>Keyed Entry Timing Parameter</i>	<i>30</i>
Accessing the CHUI BCMA Manager Menu.....	33
Accessing the CHUI BCMA Manager Menu	33
Checking the Drug IEN Code for Unit Dose Meds	35
Verifying the Drug IEN Code for a Unit Dose Medication	35
Responding to Missing Dose Requests	37
Creating a Follow-up Message for a Missing Dose Request	37
Resetting User Parameters.....	41
Resetting a User’s Default Parameter Settings	41
Using the Trouble Shoot Med Log.....	43
Identifying Scanning Problems.....	43
Running the Unknown Action Status Report.....	47
Creating a Listing of Unknown Actions	47
Using Immunizations Documentation by BCMA.....	48a
Validate the Immunizations Documentation by BCMA Nightly Task	48a
Customizing the BCMA GUI Tools Menu.....	49
Defining the Tools Menu in Vista.....	49
Glossary	53

Table of Contents

Learning BCMA Lingo.....	53
Appendix A: Setting Site Parameters for Indian Health Service (IHS).....	59
Defining and Setting Site Parameters for IHS.....	59
<i>Working with the Parameters Tab</i>	59
Index.....	61

Setting Site Parameters for GUI BCMA

Defining and Updating Site Parameters for Your Division (cont.)



TIP:

Modifying the “BCMA On-line” parameter affects *all* users signing on to your division. Multi-division sites must disable access to each site.

Working with the Facility Tab

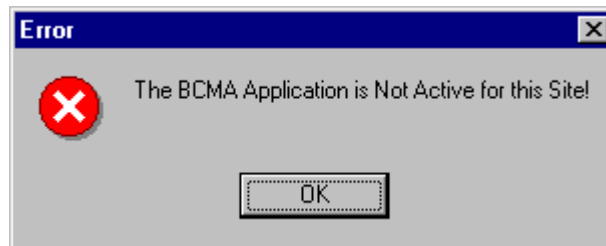
The Facility Tab, on the BCMA Site Parameters Main Screen, provides the following functions:

Facility Information (Read-Only): This area provides read-only information populated by the INSTITUTION file (#4).

BCMA On-Line: This option (check box) under the “BCMA Status for Division” section lets IRM personnel enable or disable all GUI BCMA options. It does not affect CHUI BCMA options.

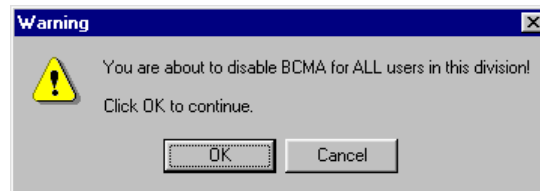
- If the “BCMA On-Line” check box is checked, the system is on-line and all GUI BCMA options are available.
- If the “BCMA On-line” check box is *not* checked, all users currently logged on to GUI BCMA options will *not* be affected. However, when a user attempts to log on to the GUI options, the following Error message displays:

Example: Error Message When BCMA Not Active for Your Site



- If the “BCMA On-Line” check box is checked and you try to take it off-line by deselecting the check box, the following Warning message displays:

Example: Warning Message When All BCMA Users Are Being Disabled for Your Division



Setting Site Parameters for GUI BCMA

Defining and Updating Site Parameters for Your Division (cont.)

Working with the Parameters Tab

You can activate the Parameters Tab by placing the cursor over the Tab, and then clicking once on it. Doing so activates the site parameters for this Tab.

Keyboard Shortcut: Press **ALT+P** to display the Parameters Tab.

This section describes the fields and check boxes available on the Parameters Tab.

Example: Site Parameters Available Parameters Tab

The screenshot shows the 'BCMA Site Parameters' dialog box with the 'Parameters' tab selected. The dialog is organized into several sections:

- Output Devices:** Missing Dose Request Printer: MINPBR11G-70
- Administration:**
 - Require ESig to Administer Medication
 - Allow Multiple Admins for On-Call
- Mail Groups:**
 - Due List Error: BCMA DUE LIST
 - Missing Dose Notification: BCMA MISSING DOSE
 - Unknown Actions: UNKNOWWN ACTIONS
 - Unable To Scan: BCMA UNABLE TO SCAN
- Reports:**
 - Include Comments
 - Med Hist Days Back: 90
- Bar Code Options:**
 - Default Bar Code Format: 128
 - Default Bar Code Prefix: [Empty]
 - Using Robot RX
- 5 Rights Override:**
 - Unit Dose Administration
 - IV Administration
- Allowable Time Limits (In Minutes):**
 - Before Scheduled Admin Time: 60
 - After Scheduled Admin Time: 60
 - PRN Effectiveness Entry: 240
- Virtual Due List Default Times:**
 - Start Time: 1 hour prior
 - Stop Time: 1 hour after
- Include Schedule Types:**
 - PRN
 - On-Call
 - Continuous
 - One-Time
- Misc Options:**
 - Max Client Server Clock Variance: 30
 - Patient Transfer Notification Timeframe [In Hours]: 12
 - BCMA Idle Timeout [In Minutes]: 30
 - PRN Documentation [In Hours]: 8
 - Max Date Range: 0
 - Patch Display Duration: 7
 - Enable CPRS Med Order Button

Setting Site Parameters for GUI BCMA

Defining and Updating Site Parameters for Your Division (cont.)

Working with the Parameters Tab (cont.)

➤ Output Devices Area

Missing Dose Request Printer: This field identifies the default division printer for Missing Dose requests.

➤ Mail Groups Area

Mail Groups: This area lists the mail groups that must be created using the *Vista Mail Group Edit* [XM EDIT MG] option, and by setting the TYPE field to PUBLIC. BCMA

V. 3.0 includes the following mail groups listed below:

- **Due List Error:** This field generates an E-mail message for any medication order that BCMA cannot resolve for VDL placement, and sends it to the mail group members. An example might include no administration times entered for a Continuous order.
- **Missing Dose Notification:** This field generates an E-mail message for any Missing Dose Request entered using the BCMA CHUI or GUI menu options. The E-mail is sent to all members of the mail group, specifically Pharmacy, as a “fail safe” even if the designated Missing Dose printer is not functioning.
- **Unknown Actions:** This field generates an E-mail message for any administration with an “Unknown” status while processing administrations to display on the VDL.
- **Unable to Scan:** Generates an E-mail message to alert the mail group when a user creates an “Unable to Scan” entry and to assist in researching the reasons for a scanning failure.

➤ Reports Area

Include Comments: This check box, when selected, will automatically check the “Include Comments” check box in the Report dialog box as the default setting for the Medication History Report and the Medication Log Report. If this is unchecked, the “Include Comments” check box will be unchecked, by default, in the related Report dialog box. Users can change the check box setting in the Printer dialog box as needed, depending on whether they wish to have the comments for the administration included on the report.

Med Hist Days Back: This field lets you define the number of days in the past, from the current system date, that the Medication History Report should retrieve data. The allowable entry is 1 to 9999 days. The default is 30 days.

- A user can change the date range for the report, in the Report dialog box.

Setting Site Parameters for GUI BCMA

Defining and Updating Site Parameters for Your Division (cont.)

Working with the Parameters Tab (cont.)

➤ Bar Code Options Area

Default Bar Code Format: This field lets you select the desired bar code format that you want to produce on the bar code label printer. The following options are available from a drop-down list box: C39, I28, and I25.

Default Bar Code Prefix: This field lets you specify up to five alphanumeric characters of text that will print as a prefix on a bar code label printed on the bar code label printer.

Using Robot RX: This check box should be checked only if your site is using the Robot RX product.

➤ Five Rights Override Area

Unit Dose Administration: This field lets you control the Unable to Scan verification process by allowing the user to verify the Five Rights of medication administration and proceed with a unit dose administration without entering a Drug IEN or National Drug Code (NDC).

IV Administration: This field lets you control the Unable to Scan verification process by allowing the user to verify the Five Rights of medication administration and proceed with an IV administration without entering a Drug IEN or National Drug Code (NDC).

➤ Administration Area

Require ESig To Administer Medication: This check box requires that users enter the Access/Verify and Electronic Signature Code (ESig) before launching GUI BCMA. Otherwise, the clinician administering medications will be asked for Access/Verify codes only.

Allow Multiple Admins for On-Call: When checked, your division allows multiple administrations for an On-Call order.

➤ Allowable Time Limits In Minutes Area

Before and After Scheduled Admin Time: This parameter defines the allowable medication administration timeframe. In the example provided, the allowable timeframe is set to one hour before through one hour after the scheduled administration time. Each window may be defined up to 240 minutes.

PRN Effectiveness Entry: This parameter defines the allowable time for the PRN Effectiveness to be assessed, after a PRN medication is given, and before a variance is logged. If a medication administration is outside the allowable time, a variance will be logged when the effectiveness is entered. You can define this window up to 240 minutes.

Glossary

Learning BCMA Lingo

The alphabetical listing, in this section, is designed to familiarize you with the many acronyms and terms used throughout this manual.

Example: Alphabetical Listing of BCMA Acronyms and Terms

Acronym/Term	Definition
Active	When a medication has been finished <i>and</i> verified, it becomes “active,” and displays on the VDL under the related Medication Tab. A nurse can then administer the medication to the patient. Under the IV Medication Tab, this information is listed in the Status column.
BCMA	Bar Code Medication Administration. A VistA software application used in VAMCs for validating patient information and medications against active medication orders <i>before</i> being administered to a patient.
BCMA Clinical Reminders	A marquee located in the lower, right-hand corner of the VDL that identifies PRN medication orders needing effectiveness documentation. The setting is based on the “PRN Documentation” site parameter, and applies to current admissions or the site parameter timeframe (whichever is greater). A mouse-over list displays when the pointer is placed over the PRN Effectiveness Activity, or a full list is available by double clicking on the Activity.
CHUI	Character-based User Interface.
Client	An architecture in which one computer can get information from another. The Client is the computer that asks for access to data, software, or services.
Clinician	Nursing personnel who administer active medication orders to patients on a ward. In a VAMC, a number of teams may be assigned to take care of one ward, with specific rooms and beds assigned to each team.
Continuous Order	A medication given continuously to a patient for the life of the order, as defined by the order Start and Stop Date/Time.
CPRS	Computerized Patient Record System. A VistA software application that allows users to enter patient orders into different software packages from a single application. All pending orders that appear in the Unit Dose and IV packages are initially entered through the CPRS package. Clinicians, Managers, Quality Assurance Staff, and Researchers use this integrated record system.
ESig	Electronic Signature Code.
FileMan	The VistA database management system.
Finish	The process in which the Pharmacist adds the information necessary to make the order active. For example: dispense drug, and start/stop date.

Glossary

Learning BCMA Lingo (cont.)

The alphabetical listing, in this section, is designed to familiarize you with the many acronyms and terms used throughout this manual.

Example: Alphabetical Listing of BCMA Acronyms and Terms

Acronym/Term	Definition
Given	When a medication is administered to a patient, it is considered to be “Given” and marked as such (with a “G”) in the Status column of the VDL.
GUI	Graphical User Interface.
HRN	Health Record Number – 6 digit patient identifier in IHS/Tribal facilities
IEN	Internal Entry Number. The internal entry drug number entered by Pharmacy personnel into the DRUG file (#50) to identify Unit Dose and IV medications.
IHS	Indian Health Service
Internal Entry Number	Also called “IEN,” the internal entry drug number entered by Pharmacy personnel into the DRUG file (#50) to identify Unit Dose and IV medications.
IV	A medication given intravenously (within a vein) to a patient from an IV Bag. IV types include Admixture, Chemotherapy, Hyperal, Piggyback, and Syringe.
LIMITED ACCESS BCMA	A mode in which BCMA can be accessed that provides medication administering users the ability to access patient records for non-medication administration documentation, review and reporting purposes without being at the patient’s bedside.
MAH	Medication Administration History. A patient report that lists a clinician’s name and initials, and the exact time that an action was taken on an order (in a conventional MAR format). Each order is listed alphabetically by the orderable item. The Date column lists three asterisks (***) to indicate that a medication is not due. The report also lists information about when an order is placed “On Hold” and taken “Off Hold” by a provider, and the order Start and Stop Date/Time for the medication.
MAR	Medication Administration Record. The traditional, handwritten record used for noting when a patient received a medication. BCMA replaces this record with an MAH.
Medication Administration History Report	Medication Administration History. A patient report that lists a clinician’s name and initials, and the exact time that an action was taken on an order (in a conventional MAR format). Each order is listed alphabetically by the orderable item. The Date column lists three asterisks (***) to indicate that a medication is not due. The report also lists information about when an order is placed “On Hold” and taken “Off Hold” by a provider, and the order Start and Stop Date/Time for the medication.

Glossary

Learning BCMA Lingo (cont.)

The alphabetical listing, in this section, is designed to familiarize you with the many acronyms and terms used throughout this manual.

Example: Alphabetical Listing of BCMA Acronyms and Terms

Acronym/Term	Definition
Refused	The status for an IV bag or Unit Dose to indicate that the patient refused to take the dose.
RPMS	Resource and Patient Management System – health information system for IHS, analogous to Vista
Schedule Type	Identifies the type of schedule (i.e., Continuous, PRN, On-Call, and One-Time) for the medication being administered to a patient.
Security Keys	Used to access specific options within BCMA V. 3.0 that are otherwise “locked” without the security key. Only users designated as “Holders” may access these options.
Solution	A homogeneous mixture of two or more substances. For IVs, these would be liquids.
Start Date/Time	The date and time that a medication is scheduled for administration to a patient.
STAT Order	A medication order given immediately to a patient, entered as a One-Time order by providers and pharmacists. This order type displays for a fixed length of time on the VDL, as defined by the order Start and Stop Date/Time.
Stop Date/Time	The date and time that a medication order will expire, and should no longer be administered to a patient.
Strength	The degree of concentration, distillation, or saturation of a medication.
Unit Dose	A medication given to a patient, such as tablets or capsules.
VDL	Virtual Due List. An on-line “list” used by clinicians when administering active medication orders (i.e., Unit Dose, IV Push, IV Piggyback, and large-volume IVs) to a patient. This is the Main Screen in BCMA V. 3.0.
Verify	When a nurse or a Pharmacist confirms that a medication order is accurate and complete, according to the information supplied by the Provider.
Virtual Due List	Also called “VDL,” an on-line list used by clinicians when administering active medication orders to a patient. This is the Main Screen in BCMA V. 3.0.
VistA	Veterans Health Information Systems and Technology Architecture.

Appendix A: Setting Site Parameters for Indian Health Service (IHS)

Defining and Setting Site Parameters for IHS

The Indian Health Service (IHS) project requires the addition of a new parameter to the BCMA Parameters application. The IHS user-specified parameter entries are stored at the Division level and override corresponding System level values.

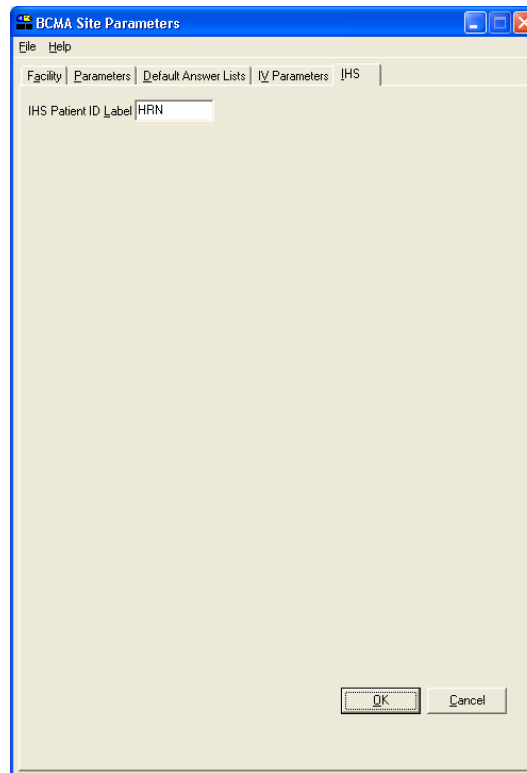
Working with the Parameters Tab

If the operating environment is Resource and Patient Management System (RPMS), the tab entitled “IHS” is added to the parameters application.

You can activate the IHS Tab by placing the cursor over the Tab and clicking once on it or by selecting Alt-H to access it directly. Doing so activates the site parameters for this Tab.

This section describes the field available on the IHS Tab.

Example: Site Parameters Available IHS Tab



IHS Patient ID Label: This text entry field allows you to enter a patient ID textual label of up to 5 characters if the operating environment is RPMS. The contents of this field are displayed throughout the BCMA GUI forms and reports.

Index

A

Accessing

- Bar Code Medication Administration
Manager Menu, 31
- CHUI BCMA Manager Menu Screen, 31
- Administration Area, Parameters Tab, 14

B

- Background, technical information, 2
- Bar Code Medication Administration Manager
Menu Screen, 31
- Bar Code Options Area, Parameters Tab, 14
- BCMA V. 3.0
 - Benefits, 1
 - Clinical Reminders, 16
 - Idle Timeout, 15
 - Lingo, 45-49
 - Site Parameters Main Screen with
Facility Tab Selected, 10
 - Site Parameters Opening Screen, 8
 - Target Audience, 1
- Benefits of This Manual, 1

C

- Checking Drug IEN Code for Unit Dose
Medications, 33-34
- CHUI BCMA
 - Manager Menu Screen, 31
 - On-line Help, 4
- Connect to Selection Dialog Box, 5
- Conventions Used in This Manual
 - Keyboard Responses, 2
 - Menu Options, 3
 - Mouse Responses, 2
 - Notes, 3
 - Screen Captures, 3
 - Tips, 3
 - User Responses, 3
- Creating
 - Default Answer List for Injection Sites, 24
 - Default Answer List for Reason Medication
Given PRN, 19-21
 - Default Answer List for Reason Medication
Held, 22
 - Default Answer List for Reason Medication
Refused, 23
 - Follow-up Message for a Missing Dose
Request, 35-37

D

- Default
 - Answer Lists Tab, 17-24
 - Answer Lists Tab Selected and List Names
Provided Screen, 17
 - Parameter Settings, Resetting for a User,
39-40
- Defining and Setting Site Parameters for IHS, 59
- Defining and Updating Site Parameters for
Your Division, 9-29
- Division Selection Dialog Box, 9
- Drug File Inquiry Screen, 33
- Drug IEN Code for Unit Dose Medications,
Verifying, 33-34

E

- Enable CPRS Med Order Button, Selecting, 16
- Error Message When BCMA Not Active for
Your Site, 11

F

- Facility Tab, 11
- Five Rights Override Parameters, 14
- Follow-up Message
 - Creating for a Missing Dose Request, 35-37

G

- GUI BCMA Site Parameters Application
Desktop Icon, 5

I

- Identifying Scanning Problems Using the
Trouble shoot Med Log, 41-43
- Include Comments Parameter, 12-13
- Information Message When Prompts Default
Setting Changed, 29
- Introducing
 - BCMA V. 3.0, 1
 - This Manual, 3
- IV Parameters Tab
 - IV Type Area, 27
 - Location Area, 26
 - Prompts Area, 28-29

K

- Keyboard Response Conventions, 2
- Keyed Entry Timing Parameter, 30

Index

L

Location Area, IV Parameters Tab, 26

M

Mail Groups Area, Parameters Tab, 13

Med Hist Days Back Parameter, 12-13

Med Log

 Identifying Scanning Problems, 41-43

 Trouble Shooter Screens, 41-42

Menu Option Conventions, 3

Misc Options Area, Parameters Tab, 15

Missing Dose

 Creating a Followup Message, 35-37

 Request Entry Screen, 36

 Request Selection Screen, 35

Mouse Response Conventions, 2

N

Notes Conventions, 3

O

Online Help, CHUI, 4

Order Validation Screen, Trouble Shoot Med
Log, 43

Other Sources of Information, 2

Output Devices Area, Parameters Tab, 12-13

P

Parameters Tab

 Administration Area, 14

 Bar Code Options Area, 14

 Mail Groups Area, 13

 Misc Options Area, 15-16

 Output Devices Area, 12-13

 Reports Area, 12-13

 Virtual Due List Setup Area, 15

Patient Transfer Notification, 15

Pharmacy Reasons Needed Selection Table, 37

PRN Documentation, 16

Prompts Area, IV Parameters Tab, 28-29

Prompts Drop-Down List Box for Additive
Field, 28

PSB CPRS MED BUTTON Security key, 16

PSB MANAGER Security Key, 1

PSB Unable to Scan Security Key, 56

R

Related Documentation, 2

Reports Area, Parameters Tab, 12-13

Reset User Parameters Sequence Screen, 39

Resetting a User's Default Parameter Settings,
39-40

Responding to Missing Dose Requests, 35-37

Results of Drug File Inquiry Screen, 34

S

Screen Capture Conventions, 3

Security Keys

 PSB CPRS MED BUTTON, 16

 PSB MANAGER, 1

Select Division Dialog Box, 7

Selecting a Default Answer Lists Name Screen,
18

Setting Site Parameters for GUI BCMA V. 3.0,
5

Signing on to GUI BCMA Site Parameters
Application, 5-8

 For VAMCs with Multiple Divisions, 7

Site Parameters

 Available Using Parameters Tab, 12-15

 Available When IV Parameters Tab Selected
Screen, 25

Suggested Default Answer Lists

 For Injection Sites, 24

 For Reason Medication Given PRN, 20-21

 For Reason Medication Held, 22

 For Reason Medication Refused, 23

T

Tabs

 Facility, 11

 Default Answer Lists, 17-24

 IV Parameters, 25-29

 Parameters, 12-16

Target Audience for This Manual, 1

This Manual

 Benefits of, 1

 Conventions Used, 2-3

 Other Sources of Information, 2

 Related Documentation, 2

 Target Audience, 1

Tips Conventions, 3

Trouble Shoot Med Log, Using, 41-43

Type Drop-Down List Box for IV Type Area, 27

Index

U

- Unable to Scan Mail Group, 13
- Unit Dose Medications
 - Verifying the Drug IEN Code for, 33
- Updating and Defining Site Parameters for Your Division, 9-29
- User Response Conventions, 3
- Using the Trouble Shoot Med Log, 41-43

V

- Verifying the Drug IEN Code for Unit Dose Medications, 33-34
- Virtual Due List Setup Area, Parameters Tab, 15
- VistA Sign-on Dialog Box, 5

W

- Ward Drop-Down List Box for Location Area, 26
- Warning Message
 - About Updates to Parameters Being Immediate, 8
 - That Fields in Inpatient Medications V. 5.0 Changed, 29
 - When All BCMA Users Are Being Disabled from Your Division, 11
- Working with
 - Default Answer Lists Tab, 17-24
 - Facility Tab, 11
 - IV Parameters Tab, 25-29
 - Parameters Tab, 12-16

